



A comprehensive range of conductor & cable cutting tools

- Battery, Hand, Ratched & Manual
- Guillotine, Parrot, Scissors & Ratchet Style
- Klauke, TEN, Reliable & Klein
- Designed for all types of material





Contents

CUTTER COMPARISON MATRIX.....	3
8mm Bolt Cutter - Klauke	4
12mm Bolt Cutter - Klauke	4
20mm Cutter, ACSR/AL/CU - Klauke	5
20mm Remote Control Cutter, ACSR/AL/CU - Klauke.....	5
25mm Cutter, ACSR/Stay Wire/AL/CU - Klauke	6
25mm Cutter, ACSR/AL/CU - Klauke	6
32mm Cutter, AL/CU - Klauke.....	7
32mm Remote Control Cutter, AL/CU - Klauke	7
45mm Cutter, ACSR/Stay Wire/Armoured/AL/CU - Klauke	8
45mm Cutter, ACSR/Stay Wire/AL/CU - Klauke	8
50mm Cutter, AL/CU - Klauke	9
55mm Cutter, ACSR/AL/CU - Klauke.....	9
52mm Cutter - ACSR - TEN	10
50mm Cutter - AL/CU - TEN	10
65mm Cutter - AL/CU - TEN	10
85mm Battery Cutters - Klauke	11
105mm Battery Cutters - Klauke	11
Spiking/Cutting, Cable system - Remote Controlled 1000V Insulated Hydraulic Pump - Klauke	12
Spiking/Cutting, Cable System - Remote Controlled - Klauke	12
20mm Cutter, ACSR/AL/CU - Klauke	13
25mm Cutter, ACSR/AL/CU - Klauke	13
32mm Cutter, AL/CU - Klauke.....	14
50mm Cutter, AL/CU - Klauke	14
5 Tonne Crimper & Cutter - Klauke.....	15
5 Tonne Crimper & Cutter - Klauke.....	16
Universal Tool Adaptors.....	17
12 Tonne Universal Tool - Pistol Grip - Klauke	17
6 Tonne Universal Tool - Pistol Grip - Klauke.....	18
6 Tonne Universal Tool - In-Line - Klauke	18
Makita & Klauke Batteries	19
18V Charger - Makita.....	19
10.8V Charger - Klauke	19
Adaptor, Makita Platform to Milwaukee Battery - TEN.....	19
Tool Strap - TEN	19
Cutters, Hand Operated up to 85mm.....	20
Cutters, Remote Head up to 105mm	20
ACSR - Steel - Guy Cable Cutters	21
Copper - Aluminium Cable Cutters.....	21
Ratcheting Cable Cutter - Reliable.....	21
Cable Cutter - AL/CU - Klein.....	21



CUTTER COMPARISON MATRIX

CUTTER PART No.	DESCRIPTION	JAW OPENING	CONTAINER SEAL	BARE AL & CU	ACSR	GUY WIRE	WIRE ROPE	REBAR GROUND ROD	CABLE TRAY SOFT STEEL BOLT	SWA
BATTERY										
EBS8CFM	Bolt Cutter	8	✓					✓		
EBS12CFM	Bolt Cutter	12	✓					✓		
ES20CFM/ ES20ISM/ ES20RMCCFM	Scissor Style Cutter	20		✓	✓					
ESG25CFM	Guilotine Style Cutter	25		✓	✓	✓		✓	✓	✓
ESM25CFM/ESM25ISM	Parrot Beak style Cutter	25		✓	✓					
ES32CFM/ ES32ISM/ ES32RMCCFM	Scissor Style Cutter	32		✓						
ESGM452CFM	Guilotine Style Cutter	45		✓	✓	✓		✓	✓	✓
ESG45CFM	Guilotine Style Cutter	45		✓	✓	✓		✓	✓	✓
ESM50CFM/ ESM50ISM	Parrot Beak style Cutter	50		✓						
ESG55CFM	Guilotine Style Cutter	55		✓	✓	✓		✓	✓	✓
RCB-52-ACSR	Ratchet Style Cutter	52		✓	✓					
RCB-50Y	Ratchet Style Open Jaw Cutter	50		✓						
RCB-65N	Ratchet Style Cutter	65		✓						
ESG65RMCCFM	Guilotine Style Cutter	65		✓	✓	✓		✓	✓	✓
ES85CFM	Parrot Beak style Cutter	85		✓						
ESG85CFM	Guilotine Style Cutter	85		✓						✓
ES105CFM	Parrot Beak style Cutter	105		✓						✓
ESG105CFM/ ESG105RMCCFM	Guilotine Style Cutter	105		✓						✓
EK425ISM	CJACSR	Parrot Beak style Cutter Attachment	17.5		✓					
EK425CFM	CJCU	Parrot Beak style Cutter Attachment	20		✓					
EK120UNVCFM	UCACSR	Guilotine Style Cutter Attachment	40		✓					
EK60UNVCFM	UC40	Guilotine Style Cutter Attachment	40		✓					
EKM60UNVCFM										
HAND HYDRAULIC										
HC-20A	Guilotine Style Cutter	20		✓	✓	✓	✓	✓	✓	
REL-58MC	Guilotine Style Cutter	25		✓	✓	✓	✓	✓	✓	
REL-2000MC	Guilotine Style Cutter	50		✓	✓	✓	✓	✓	✓	
HC-40A	Guilotine Style Cutter	40		✓	✓	✓	✓	✓	✓	
HSG45	Guilotine Style Cutter	45		✓	✓	✓	✓	✓	✓	
HSG85	Guilotine Style Cutter	85		✓						
REMOTE HEAD - HYDRAULIC										
SDK20P33MC	Scissor Style Cutter	20		✓	✓					
SDG45C	Guilotine Style Cutter	45		✓	✓					
SDG852C	Guilotine Style Cutter	85		✓						✓
SDK85C	Parrot Beak style Cutter	85		✓						✓
SDG105C	Guilotine Style Cutter	105		✓						✓
RATCHET HAND										
9009	Ratchet Style Cutter	18		✓	✓				✓	
63607	Ratchet Style Cutter	22		✓	✓				✓	
RC-32ACSR	Ratchet Style Cutter	32		✓	✓				✓	
K1062	Ratchet Style Cutter	52		✓						
K683T	Ratchet Style Cutter	32		✓						
REL-R-HC	Ratchet Style Parrot Beak Cutter	30		✓	✓					
REL-R-SC	Ratchet Style Parrot Beak Cutter	50		✓	✓					
HAND										
63065	Hand Parrot Beak Cutter	22		✓						



Klauke
NEXT
GENERATION

Cutters - Battery Powered

8mm Bolt Cutter - Klauke

Part No. EBS8CFM

- For cutting cable trays, bolts and medium-hard steel wire
- Ideal in confined areas: narrow cutting head
- All tool data can be viewed using on-tool display and i-press app

Features

- Makita battery system
- All data can be easily read via Bluetooth
- Open head, rotatable 330°
- One-button controlling all tool functions

Order Information

Part No.	Description
EBS8CFM-0	Tool skin and case
EBS8CFM-K	Tool, 2 x 1.5Ah batteries, charger and case

Technical Data

Cutting Force (kN)	15
Cutting Range (mm)	max 8 diameter
Cutting Time (s)	approx. 1 (depending on material thickness)
No. of Cuts	approx 300 for bolts 5mm diameter
Battery	Makita 18V 1.5Ah, Li-Ion*
Charging Time (min)	15
Length (mm)	342.5 including battery
Weight (kg)	1.55 including battery

* See Page 19 for battery and charger information

12mm Bolt Cutter - Klauke

Part No. EBS12CFM

- For cutting, shipping container seals, cable trays, bolts and medium-hard steel wire
- Ideal in confined areas: narrow cutting head
- All tool data can be viewed using on-tool display and i-press app

Features

- Makita battery system
- All data can be easily read via Bluetooth
- Open head, rotatable 330°
- One-button controlling all tool functions
- Ergonomic balanced centre of gravity

Order Information

Part No.	Description
EBS12CFM-0	Tool skin and case
EBS12CFM-K	Tool, 2 x 1.5Ah batteries, charger and case

Technical Data

Cutting Force (kN)	45
Cutting Range (mm)	max 12 diameter
No. of Cuts	approx 300 for bolts 5mm diameter
Battery	Makita 18V 1.5Ah, Li-Ion*
Charging Time (min)	15
Length (mm)	375.5 including battery
Weight (kg)	2.05 including battery

* See Page 19 for battery and charger information

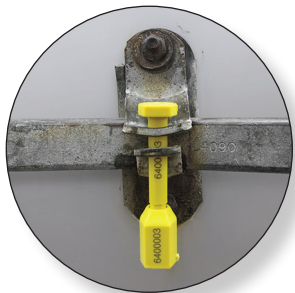


Efficient 8mm
Cutting Capacity

FAST Ideal
for cutting
cable tray



SCAN or
CLICK
to View
Operation
Video



Ideal for cutting
shipping
container seals

12mm
cutting
capacity





Klauke®
NEXT
GENERATION

Compact
Ideal for confined
work areas
i.e switchboard &
domestic UG pits



Also Available in 1000V
Insulated Version -
For more information
see page B34

20mm Cutter, ACSR/AL/CU - Klauke

Part No. ES20CFM

- For cutting Al/St conductors (ACSR), solid Cu cables and laminated copper bus bars
- Extremely robust design and lightweight
- Slim cutting head - ideal when space is critical
- All tool data can be viewed using on-tool display and i-press app

Features

- Makita battery system
- All data can be easily read via Bluetooth
- One-button controlling all tool functions
- Ergonomic balanced centre of gravity
- Open head, rotatable 330°

Technical Data

Cutting Force (kN)	23
Cutting Range (mm)	Max 20 dia. dependent on cable type
Battery	Makita 18V 1.5Ah, Li-Ion*
Charging Time (min)	15
Weight (kg)	2.15 including battery

*See Page 19 for battery and charger information

Suitable for
**ACSR,
Al & Cu**

Order Information

Part No.	Description
ES20CFM-0	Tool skin and case
ES20CFM-K	Tool, 2 x 1.5Ah batteries, charger and case

- LED Display
- Automatic retraction when operation is complete
- LED for work area illumination
- Visible and audible signals
- Battery charge and service display

20mm Remote Control Cutter, ACSR/AL/CU - Klauke

Part No. ES20RMCCFM

When cutting overhead lines, there is always the risk of coming into contact with the tool or an electric arc from a live adjacent conductor. With the new Klauke remote controlled cutting tool you remain on the ground at a safe distance.

Features

- Sunrise Adaptor suits universal heads & telescopic sticks
- Can be switched between manual & remote
- Open head is rotatable 330°
- Ergonomic balanced centre of gravity, even when used with a telescopic hot-stick pole
- LED for work area illumination
- Quick motor stop for high user safety
- Automatic retraction when operation is complete
- Saves energy: motor stops after the operation
- Simple one-hand control via remote control
- Powerful Makita battery enables longer on-site operation between charges

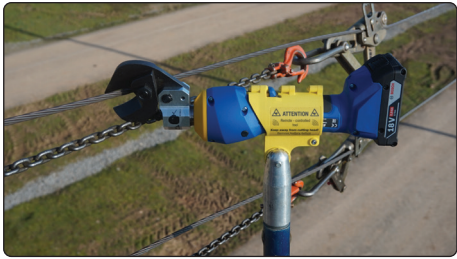
Order Information

Part No.	Description
ES20RMCCFM-0	Tool skin and case
ES20RMCCFM-K	Tool, 2 x 1.5Ah batteries, charger and case

Technical Data

Head Type	Open
Battery	Makita 18V 1.5Ah, Li-Ion*
Bluetooth Range (m)	20
Weight (kg)	2.15 including battery

*See page 19 for battery and charger information



Perfect for cutting
away lightning
arrester leads



SCAN or
CLICK to see
the Remote
Cutter in
action



Klauke®
NEXT
GENERATION



Suitable for
Stay wire
& ACSR



25mm Cutter, ACSR/Stay Wire/AL/CU - Klauke

Part No. ESG25CFM

- Suitable for cutting Stay Wire, Al/ St cables (ACSR), Cu, Al, St as well as armoured cables & solid structural steel
- Lightweight robust design
- Slim cutting head - ideal when space is critical
- All tool data can be viewed using on-tool display and i-press app

Order Information

Part No.	Description
ESG25CFM-0	Tool skin and case
ESG25CFM-K	Tool, 2 x 1.5Ah batteries, charger and case



SCAN or CLICK for correct use video

Features

- All data can be easily read via Bluetooth
- Closed flip top head style, rotatable 350°
- One-button controlling all tool functions
- Balanced Centre of Gravity
- Automatic retraction when operation is complete
- LED Display
- LED for work area illumination
- Manual retract stop (MRS) for efficient operations
- Visible and audible signals
- Battery charge and service display

Technical Data

Cutting Force (kN)	60
Cutting Range (mm)	Max 25 dia. dependent on cable type
Battery	Makita 18V 1.5Ah, Li-Ion*
Charging Time (min)	15
Weight (kg)	2.35 including battery

*See page 19 for battery and charger information

Klauke®
NEXT
GENERATION



SCAN or
CLICK to see
the Cutter in
action



25mm Cutter, ACSR/AL/CU - Klauke

Part No. ESM25CFM

- For cutting open wires AL/CU/ACSR & stay wires
- Slim Parrot Beak cutting head ideal when space is critical
- All tool data can be viewed using on-tool display and i-press app

Order Information

Part No.	Description
ESM25CFM-0	Tool skin and case
ESM25CFM-K	Tool, 2 x 1.5Ah batteries, charger and case

Suitable for
ACSR,
Al & Cu

Features

- All data can be easily read via Bluetooth
- One-button controlling all tool functions
- Balanced Centre of Gravity
- Parrot Beak Head, rotatable 350°
- Automatic retraction when operation is complete
- LED for work area illumination
- Visible and audible signals
- LED Display

Technical Data

Cutting Force (kN)	67
Cutting Range (mm)	ACSR Max 25 dia. Stay wires Max 12 dia.
Battery	Makita 18V 1.5Ah, Li-Ion*
Charging Time (min)	15
Weight (kg)	2.9 including battery

*See page 19 for battery and charger information



Klauke®
NEXT
GENERATION

Suitable
for Al & Cu
conductors



32mm Cutter, AL/CU - Klauke

Part No. ES32CFM

- Extremely robust design and lightweight
- Slim cutting head - ideal when space is critical
- All tool data can be viewed using on-tool display and i-press app
- Suitable for Al and CU conductors only

Features

- Makita battery system
- All data can be easily read via Bluetooth
- One-button controlling all tool functions
- Effortless working due to balanced centre of gravity
- Open head, rotatable 330°

Order Information

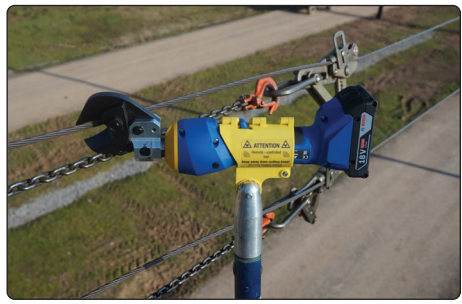
Part No.	Description
ES32CFM-O	Tool skin and case
ES32CFM-K	Tool, 2 x 1.5Ah batteries, charger and case

- Automatic retraction when operation is complete
- LED for work area illumination
- LED display for showing tool data including visible and audible signals
- Battery charge and service display

Technical Data

Cutting Force (kN)	15
Cutting Range (mm)	Max 32 dia. dependent on cable type
Battery	Makita 18V 1.5Ah, Li-Ion*
Charging Time (min)	15
Weight (kg)	2.15 including battery

*See Page 19 for battery and charger information



32mm Remote Control Cutter, AL/CU - Klauke

Part No. ES32RMCCFM

When cutting overhead lines, there is always the risk of coming into contact with the tool or an electric arc from a live adjacent conductor. With the new Klauke remote controlled cutting tool you remain on the ground at a safe distance.

Order Information

Part No.	Description
ES32RMCCFM-O	Tool skin and case
ES32RMCCFM-K	Tool, 2 x 1.5A batteries, charger and case

Technical Data

Head Type	Open
Cutting Range (mm)	Max 32 dia.
Battery	Makita 18V 1.5Ah, Li-Ion*
Bluetooth Range (m)	20
Weight (kg)	2.30 including battery

*See Page 19 for battery and charger information

Features

- LED Display
- Sunrise Adaptor suits universal & telescopic sticks
- Operation can be switched between manual / remote
- Open head is rotatable 330°
- Ergonomic balanced centre of gravity, even when used with a telescopic hot-stick pole
- LED for work area illumination
- Quick motor stop for high user safety
- Automatic retraction when operation is complete
- Saves energy: motor stops after the operation
- Simple one-hand control via remote control
- Powerful Makita battery enables longer on-site operation between charges

Scan or Click below to see the Remote Cutter in action



Perfect for cutting away lightning arrester leads



Suitable
for Al & Cu
conductors



Also Available in 1000V Insulated Version
For more information see page B35



Klauke®
NEXT
GENERATION

Quick release
Flip Top Cutting Head

The most powerful
cutter in its class.
Armoured/Al/
ACSR/Cu
up to 45mm



45mm Cutter, ACSR/Stay Wire/Armoured/AL/CU - Klauke

Part No. **ESGM452CFM**

- High cutting force cuts armoured CU and AL cables, ACSR & Stay Wires
- Cuts stranded copper cables
- Extremely robust design and lightweight
- Slim cutting head - ideal when space is critical
- All tool data can be viewed using on-tool display and i-press app

Features

- All data can be easily read via Bluetooth
- Closed head with bolt interlock, flip top style, rotatable 330°
- One-button controlling all tool functions
- Effortless working due to balanced centre of gravity
- Automatic retraction when operation is complete
- Manual Retract Stop (MRS) for efficient operations
- 2 stage hydraulic system with fast feed and power stroke
- LED for work area illumination
- LED display for showing tool data including visible and audible signals
- Battery charge and service display

Order Information

Part No.	Description
ESGM452CFM-O	Tool skin and case
ESGM452CFM-K	Tool, 2 x 1.5Ah batteries, charger and case

Technical Data

Cutting Force (kN)	70
Cutting Range (mm)	Max 45 diameter
Battery	Makita 18V 4.0Ah, Li-Ion*
Charging Time (min)	36
Weight (kg)	4.6 including battery

* See Page 19 for battery and charger information

45mm Cutter, ACSR/Stay Wire/AL/CU - Klauke

Part No. **ESG45CFM**

- High cutting force cuts armoured CU and AL cables, ACSR & Stay Wires
- Also suitable for round material made of Al, Cu and steel
- Extremely robust design and lightweight
- Slim cutting head - ideal when space is critical
- All tool data can be viewed using on-tool display and i-press app

Features

- All data can be easily read via Bluetooth
- Closed head with bolt interlock, flip top style, rotatable 350°
- One-button controlling all tool functions
- Effortless working due to balanced centre of gravity
- Manual Retract Stop (MRS) for efficient operations
- 2 stage hydraulic system with fast feed and power stroke
- Automatic retraction when operation is complete
- LED for work area illumination
- LED display for showing tool data including visible and audible signals
- Battery charge and service display

Order Information

Part No.	Description
ESG45CFM-O	Tool skin and case
ESG45CFM-K	Tool, 2 x 4.0Ah batteries, charger and case

Technical Data

Cutting Force (kN)	70
Cutting Range (mm)	Max 45 diameter
Battery	Makita 18V 4.0Ah, Li-Ion*
Charging Time (min)	36
Weight (kg)	5.9 including battery



Suitable for
ACSR



SCAN or
CLICK
to see the
Cutter in
action



Klauke®
NEXT
GENERATION

Suitable for
Al & Cu

Streamline design
makes the ESM50
ideal for cutting
larger cables in
confined spaces



50mm Cutter, AL/CU - Klauke

Part No. ESM50CFM

- For cutting copper and aluminium cables
- Very high cutting capacity thanks to innovative cutting geometry
- All tool data can be viewed using on-tool display and i-press app

Features

- Makita battery system
- All data can be easily read via Bluetooth
- Open head, rotatable 350°
- One-button controlling all tool functions
- Ergonomic balanced centre of gravity
- Automatic retraction when operation is complete
- Manual Retract Stop (MRS) for efficient operations

- LED for work area illumination
- LED display for showing tool data including visible and audible signals
- Battery charge and service display



Order Information

Part No.	Description
ESM50CFM-0	Tool skin and case
ESM50CFM-K	Tool, 2 x 4.0Ah batteries, charger and case

Technical Data

Cutting Force (kN)	38
Cutting Range (mm)	Max 50 diameter
Battery	Makita 18V 4.0Ah, Li-Ion*
Charging Time (min)	36
Weight (kg)	3.0 including battery

*See Page 19 for battery and charger information

Suitable
for Al & Cu
& ACSR

55mm Cutter, ACSR/AL/CU - Klauke

Part No. ESG55CFM

- High cutting force cuts armoured CU and AL cables, ACSR & Stay Wires
- Also suitable for round material made of Al, Cu and steel
- All tool data can be viewed using on-tool display and i-press app

Features

- Makita battery system
- All data can be easily read via Bluetooth
- Closed head with bolt interlock, flip top style, rotatable 350°
- One-button controlling all tool functions
- Effortless working due to balanced centre of gravity
- Automatic retraction when operation is complete
- Manual Retract Stop (MRS) for efficient operations

- 2 stage hydraulic system with fast feed and power stroke
- LED for work area illumination
- LED display for showing tool data including visible and audible signals
- Battery charge and service display

Order Information

Part No.	Description
ESG55CFM-0	Tool skin and case
ESG55CFM-K	Tool, 2 x 4.0Ah batteries, charger and case

Technical Data

Cutting Force (kN)	120
Cutting Range (mm)	Max 55 diameter
Battery	Makita 18V 4.0Ah, Li-Ion*
Charging Time (min)	36
Weight (kg)	8.2 including battery

*See Page 19 for battery and charger information

One of the most versatile
and strongest 55mm cutters
on the market

120kN Cutting Force



Cutters, Battery Operated - Ratchet Style

Battery Operated Ratchet Cutters, designed for cutting a variety of OH Conductors & UG cables, including CU, AL & ACSR. Supplied with or without batteries and charger. Versatile Makita platform

Cuts ACSR



Features

- Ergonomically designed
- One handed operation
- Makita 18V 3.0Ah Li-ion Battery & 230VAC Rapid Charger

52mm Cutter - ACSR - TEN

SUITABLE FOR ACSR

Part No. RCB-52-ACSR

Plastic Moulded case included

- Cuts ACSR - Up to Max 300mm²
- Harden steel blade
- 52mm Jaw opening
- Popular Makita Battery Platform



Order Information

Part No.	Description
RCB-52-ACSR-0	Tool skin & case
RCB-52-ACSR-K	Tool, 2 x 3.0Ah* Makita batteries, charger and case



Cuts AL/CU

50mm Cutter - AL/CU - TEN

SCISSOR STYLE OPEN JAW

Part No. RCB-50Y

Plastic Moulded case included

- Scissor Style Head
- Ideal for Confined spaces
- Max 630mm²
- 50mm Jaw opening



Order Information

Part No.	Description
RCB-50Y-0	Tool skin & case
RCB-50Y-K	Tool, 2 x 3.0Ah* Makita batteries, charger and case

Cuts AL/CU



65mm Cutter - AL/CU - TEN

IDEAL FOR LARGER CABLES

Part No. RCB-65N

Plastic Moulded case included

- 65mm Jaw opening
- Max 1000mm²
- Ideal for larger UG cables
- Forward & Reverse mechanism



Order Information

Part No.	Description
RCB-65N-0	Tool skin & case
RCB-65N-K	Tool, 2 x 3.0Ah* Makita batteries, charger and case

Technical Data

Part No.	Head Style	Cuts	Jaw opening (mm)	Capacity (mm)			Dimensions (mm) (L x W x H)	Wt (kg) Inc. Battery
				CU	AL	ACSR		
RCB-52ACSR	Ratchet	ACSR	52	-	-	22.5	190 x 110 x 320	3.9
RCB-50Y	Scissor Ratchet	AL / CU	50	32	32	-	160 x 110 x 370	4.4
RCB-65N	Ratchet	AL / CU	65	41.5	41.5	-	175 x 110 x 320	3.5



Cutters, Battery Operated - 85mm & 105mm

Klauke
NEXT
GENERATION



ES85CFM



ESG85CFM



ES105CFM



ESG105CFM

Cuts AL/CU/SWA

Features

- Powerful Makita battery system
- All data can be easily read via Bluetooth
- Open style head, rotatable 350°
- One-button controlling all tool functions
- Effortless working due to balanced centre of gravity
- Automatic retraction when operation is complete
- Manual Retract Stop (MRS) for efficient operations
- 2 stage hydraulic system with fast feed and power stroke
- LED for work area illumination
- LED display for showing tool data including visible and audible signals
- Battery charge and service display

85mm Battery Cutters - Klauke

Part No. ES85CFM

- Large cutting capacity up to 85mm diameter
- Scissor style cutting head

**Cuts
AL/CU**

Order Information

Part No.	Description
ES85CFM-0	Tool skin and case
ES85CFM-K	Tool, 2 x 4.0Ah* batteries, charger and case

Part No. ESG85CFM

- Large cutting capacity up to 85mm diameter
- Suitable for CU, AL & SWA

**Cuts
AL/CU/SWA**

Order Information

Part No.	Description
ESG85CFM-0	Tool skin and case
ESG85CFM-K	Tool, 2 x 4.0Ah* batteries, charger and case

105mm Battery Cutters - Klauke

Part No. ES105CFM

- Extremely large cutting area up to 105mm diameter
- Suitable for CU, AL & Lightweight SWA

**Cuts AL/CU/
Lightweight
SWA**

Order Information

Part No.	Description
ES105CFM-0	Tool skin and case
ES105CFM-K	Tool, 2 x 4.0Ah* batteries, charger and case

Part No. ESG105CFM

- Extremely large cutting area up to 105mm diameter
- Guillotine style cutting head
- Suitable for CU, AL & SWA



SCAN or
CLICK
to see the
ESG105 Cutter
in action

Order Information

Part No.	Description
ESG105CFM-0	Tool skin and case
ESG105CFM-K	Tool, 2 x 4.0Ah* batteries, charger and case

Technical Data

Part No.	ES85CFM	ESG85CFM	ES105CFM	ESG105CFM
Cutting Force (kN)	30	60	74	120
Cutting Range (mm)	Max 85 OD AL & CU	Max 85 OD AL, CU & SWA	Max 105 OD AL, CU & Lightweight SWA	Max 105 OD AL, CU & SWA
Battery	Makita 18V 4.0Ah, Li-Ion*			
Charging Time (min)	36			
Weight (kg)	6.9 including battery	6.8 including battery	9.6 including battery	10.7 including battery

*See Page 19 for battery and charger information



Spiking/Cutting, Cable Systems

Spiking/Cutting, Cable system - Remote Controlled 1000V Insulated Hydraulic Pump - Klauke

Klauke®

Part No. ASSGL-Series Pump



SCAN or CLICK to View Operation Video



Technical data

Battery Voltage (V)	18
Battery	2 x 4.0Ah, Li-ion*
Charging Time (min)	36
Weight (kg)	6.4 inc battery
Operating Pressure (PSI)	700bar (1000)
Usable Oil (ml)	800
Dimensions (mm)	330 (L) x 160 (W) x (H) 280



Order Information

Part No.	Description/Components
ASSGG105LC	Safety Pump (ASSGL), Remote Kit, 2 x Batteries, 10m Non-conductive Hose, 105mm Cutting Head ** (SDG105C), & Earth Spike with copper lead
ASSGG852LC	Safety Pump (ASSGL), Remote Kit, 2 x Batteries, 10m Non-conductive Hose, 85mm Cutting Head ** (SDG8525C), & Earth Spike with copper lead

* See Page 19 for battery and charger information

** See page B29 for specifications



Safely perform your cutting/spiking operations on unproven cables from



ESG105RMCCFM

Spiking/Cutting, Cable System - Remote Controlled - Klauke

Part No. ESG105RMCCFM - ESG65RMCCFM

- Large (105mm) & Medium (65mm) diameter remote controlled cable cutter
- Same performance as the standard (105) counterpart but adds a safe work environment
- Ideal for hard to access trenches and manholes by creating adequate distance between possible live conductors and the operator

Features

- Unique End Position Control - Emits a sound on the remote to indicate a successful cut. Safer than relying on the Maximum Hydraulic pressure indicator or gauge
- Remote control will only operate when the tool trigger is locked by the Spring Ring
- Double Click on the remote to start the

Order Information

Part No.	Description
ESG105RMCCFM-K ESG65RMCCFM-K	Tool, Remote Control, 2 x Batteries, Charger and case

- cut (safety feature against unintended operation)
- Single Click on the remote for retraction

Technical Data

Part No.	ESG105RMCCFM	ESG65RMCCFM
Cutting Force (T)	120	60
Cable Type	AL/CU/SWA/ACSR	AL/CU/ACSR
Cutting Range (mm)	Max 105 dia. dependent on cable type	Max 65 dia. dependent on cable type
Battery	Makita 18V 4.0Ah, Li-Ion	Makita 18V 4.0Ah, Li-Ion
Charging Time (min)	36	36
Weight (kg)	10.5 including battery	6.0 including battery



Unique Cutting Sensor



Klauke
NEXT
GENERATION

Endless Rotating Head

Cuts
Cu, Al
& ACSR



1000V Insulated Battery Powered Tools

20mm Cutter, ACSR/AL/CU - Klauke

Part No. ES20ISM

- Orange body for easy differentiation
- Insulated and VDE certified to 1000V for increased safety
- For cutting Al/St conductors (ACSR), Al/Cu cables and laminated copper bus bars
- All tool data in view thanks to the LCD display and Klauke i-press software

Features

- All data can be easily read via Bluetooth
- Visual and audible signals
- One-button controlling all tool functions
- Balanced centre of gravity
- Endless Rotatable head
- LED for illuminating work area
- Automatic retraction when operation is complete
- LED Display

Order Information

Part No.	Description
ES20ISM-O	Tool skin and case
ES20ISM-K	Tool, 2 x batteries, charger and case

**MEETS
IEC 60900**

Technical Data

Cutting Force (kN)	23
Cutting Range (mm)	Up to 20 dia (dependent on cable/wire type)
Battery	Makita 18V 1.5Ah, Li-ion*
Charging Time (min)	15
Weight (kg)	2.1 including battery

*See Page 19 for battery and charger information

Klauke
NEXT
GENERATION

Endless Rotating Head

Cuts
Cu, Al,
ACSR &
Stays



25mm Cutter, ACSR/AL/CU - Klauke

Part No. ESM25ISM

- Orange body for easy differentiation
- Insulated and VDE certified to 1000V for increased safety
- For cutting Al/St wires (ACSR), (Cu, Al, St) cables as well as armoured cables, and stay wires
- All tool data in view thanks to the LCD display and Klauke i-press software

Features

- All data can be easily read via Bluetooth
- Visual and audible signals
- One-button controlling all tool functions
- Balanced centre of gravity
- Endless Rotatable head
- LED for illuminating work area
- Automatic retraction when operation is complete
- LED Display

Order Information

Part No.	Description
ESM25ISM-O	Tool skin and case
ESM25ISM-K	Tool, 2 x batteries, charger and case

**MEETS
IEC 60900**

Technical Data

Cutting Force (kN)	67
Cutting Range (mm)	Open wire (ACSR) to 25 dia., stay wires to 16 dia., high-tensile stay wires to 12 dia.
Battery	Makita 18V, 1.5Ah, Li-ion*
Charging Time (min)	15
Weight (kg)	2.9 including battery

*See Page 19 for battery and charger information



Klauke[®]
NEXT
GENERATION

Endless Rotating Head

**Cuts
Cu & Al**



32mm Cutter, AL/CU - Klauke

Part No. ES32ISM

- Orange body for easy differentiation
- Insulated and VDE certified to 1000V for increased safety
- Slim cutting head - ideal when space is critical
- All tool data in view thanks to the LCD display and Klauke i-press software

Features

- All data can be easily read via Bluetooth
- Visual and audible signals
- One-button controlling all tool functions
- Balanced centre of gravity
- Endless Rotatable head
- LED for illuminating work area
- Automatic retraction when operation is complete
- LED Display

Order Information

Part No.	Description
ES32ISM-0	Tool skin and case
ES20ISM-K	Tool, 2 x batteries, charger and case

**MEETS
IEC 60900**

Technical Data

Cutting Force (kN)	15
Cutting Range (mm)	max. 32 dia
Battery	Makita 18V, 1.5Ah, Li-ion*
Charging Time (min)	15
Weight (kg)	2.1 including battery

*See Page 19 for battery and charger information

Klauke[®]
NEXT
GENERATION

Endless Rotating Head

**Cuts
Cu & Al**



50mm Cutter, AL/CU - Klauke

Part No. ESM50ISM

- Orange body for easy differentiation
- Insulated and VDE certified to 1000V for increased safety
- High cutting force for cutting copper and aluminium cables
- Saves time due to innovative opening mechanism design
- All tool data in view thanks to display and i-press

Features

- All data can be easily read via Bluetooth
- Visual and audible signals
- One-button controlling all tool functions
- Balanced centre of gravity
- Endless Rotatable head
- LED for illuminating work area
- Automatic retraction when operation is complete
- LED Display

Order Information

Part No.	Description
ESM50ISM-0	Tool skin and case
ESM50ISM-K	Tool, 2 x batteries, charger and case

**MEETS
IEC 60900**

Technical Data

Cutting Force (kN)	38
Cutting Range (mm)	max. 50 dia
Battery	Makita 18V, 1.5Ah, Li-ion*
Charging Time (min)	15
Weight (kg)	3.1 including battery

*See Page 19 for battery and charger information



Klauke
NEXT
GENERATION

5 Tonne Crimper & Cutter - Klauke

Part No. EK425ISM

- Orange body for easy differentiation
- Insulated and VDE certified to 1000 V for increased safety
- All tool data in view thanks to the LCD display and Klauke i-press software

Features

- All data can be easily read via Bluetooth
- Visual and audible signals in case of error
- One-button controlling all tool functions
- Balanced centre of gravity
- Endless Rotatable head
- LED for illuminating work area
- Automatic retraction when operation is complete
- LED Display

Order Information

Part No.	Description
EK425ISM-0	Tool skin and case
EK425ISM-K	Tool, 2 x batteries, charger and case

**MEETS
IEC 60900**

Endless Rotating Head

Crimps up to
240mm²
Cuts up to
20mm



Technical Data

Crimping Force (kN)	53
Application	5 Tonne Crimping
Crimping Capacity (mm ²)	Cu/Al 240, ACSR 185
Battery	Makita 18V, 1.5Ah, Li-ion*
Charging Time (min)	15
Stroke/Opening Width (mm)	40
No of crimps per charge	140 @ 70mm ²
Dimensions (mm)	430(H) x 110(W) x 80(D)
Weight (kg)	2.6 including battery

*See Page 19 for battery and charger information

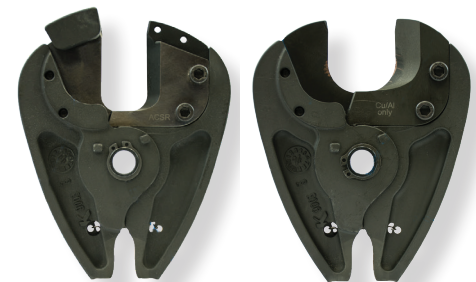
53kN force in a lightweight tool of only 2.6kg

6T Hex Dies Available
See Hydraulic Section
Page B11 of the
TEN Catalogue



Available cutting heads

Part No.	Capacity (mm)	Length (mm)	Weight (kg)	Cuts
CJACSR	17.5 OD	145	1	ACSR/Steel
CJCU	20 OD	140	1	CU/AL



CJACSR

CJCU



5 Tonne Crimper & Cutter - Klauke

Part No. EK425CFM

- Suitable for ABC, 6 to 240mm² Cu & 10 to 300mm² Al
- One handed ergonomic design with single push button operation
- Automatic retraction once crimp is completed
- Autostop function
- LED Light Illuminates working space
- Red LED display and acoustic signal
- High performance 18V Lithium-Ion battery
- Crimp head rotates 360°
- Multi-functional LED indicates maintenance and battery control
- Manual retraction does not rely on battery power



Order Information

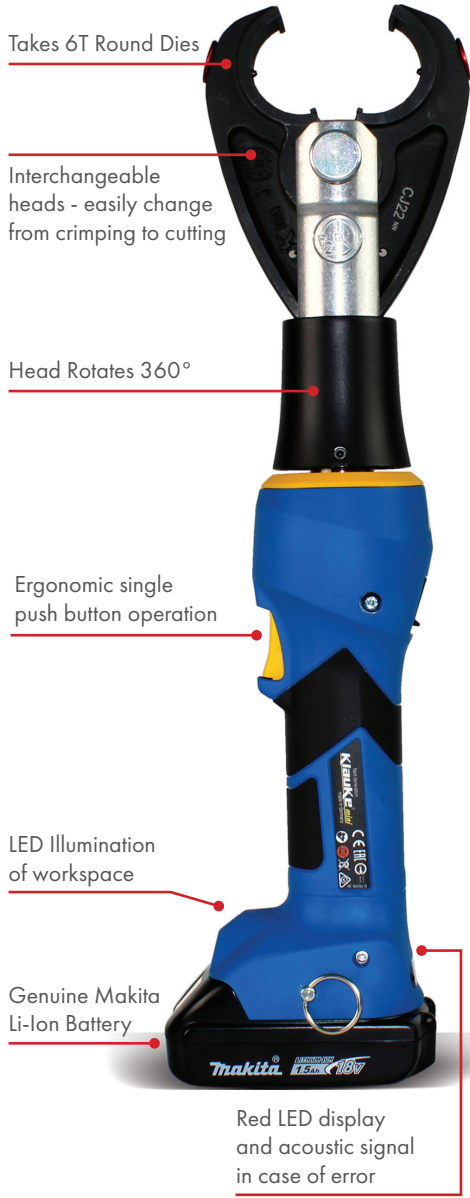
Part No.	Description
EK425CFM-O	Tool skin and case
EK425CFM-K	Tool, 2 x 1.5Ah batteries, charger and case

Ideal for ABC

Multi-function lightweight tool of only 2.6kg

Crimps (mm ²)	Cu/Al 240, ACSR 185
Crimping Force (kN)	50
Stroke/Opening Width (m)	40
No of crimps per charge	140 @ 70
Battery	Makita 18V, 1.5Ah, Li-ion*
Charging Time (min)	15
Weight (kg)	2.6 including battery

*See Page 19 for battery and charger information



6T Dies available see page B11, Hydraulic Section of the TEN Catalogue



6T Aluminium Die



6T Copper Die



6T ABC Die

Available Interchangeable cutting heads

Part No.	Capacity (mm)	Length (mm)	Weight (kg)	Cuts
CJACSR	17.5 OD	145	1	ACSR/Steel
CJCU	20 OD	140	1	CU/AL



CJACSR



CJCU



Klauke® 12 Tonne Universal Tool - Pistol Grip - Klauke

Part No. EK120UNVCFM

- One head for crimping, cutting and punching - one tool for all
- Ideal for field operations where all common jobs can be carried out with just one tool
- Very large crimping range

Quick release flip-top head

Next Generation



12 Tonne Die Adapter (included)

Rotatable Head

Ergonomic single push button operation

LED Illumination of workspace

LED display

Genuine Makita Li-Ion Battery

Features

- Makita battery system
- All data can be easily read via Bluetooth
- Universal head with flip top style, rotatable
- One-button controlling all tool functions
- Automatic retraction after operation completed
- 2 stage hydraulic system with fast feed and power stroke
- Effortless working due to balanced centre of gravity
- LED for work area illumination
- LED display for showing tool data
- Battery charge and service display

Order Information

Part No.	Description
EK120UNVCFM-0	Tool skin, 12 Tonne Die Adapter and case
EK120UNVCFM-K	Tool, 12 Tonne Die Adapter, 2 x 4.0A batteries, charger and case

Technical Data

Crimping Force (kN)	108
Crimping Range (mm)	10-400
Number of Crimps	approx. 110 at 150mm Cu DiN
Cutting Range (mm)	max. 40 diameter
Punching Capacity (mm)	Up to 144 dia. round**
Battery	Makita 18V 4.0Ah, Li-Ion*
Charging Time (min)	36
Weight (kg)	7.35 including battery

*See Page 19 for battery and charger information

**10-400mm² Crimping capacity
40mm dia. Cutting Range
144mm dia. round punching**

Universal Tool Adaptors

Accessories/Tool	EK120UNVCFM	EK60UNVCFM	EKM60UNVCFM
12 Tonne Die Adaptor (included)	UA12T	Not Applicable	Not Applicable
6 Tonne Die Adaptor (included)	Not Applicable	UA22	UA22
Cutter 40mm ACSR	UCASR	UCASR	UCASR
Cutter 40mm Al/Cu	UC40	UC40	UC40
Punch Adaptor	UA12P (Up to 144mm)	UA12P (Up to 64mm)	UA12P (Up to 64mm)
Cutter - Rail Catenary	Upon Request	Upon Request	Upon Request
Cutter - Threaded Rod	Upon Request	Upon Request	Upon Request

**Square Punch & Dies available upon request

12T Die Adaptor
Part No. UA12T



Cutting Die
Part No. UCASR



Cutting Die
Part No. UC40

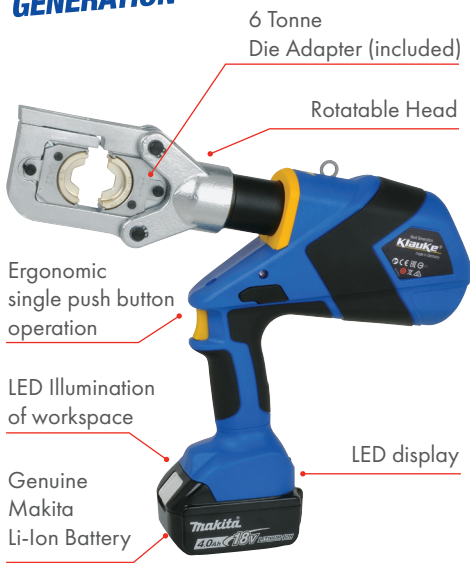


Punch Adaptor
Part No. UA12P

Punch Dies and Draw studs available - See Page B50



Klauke®
NEXT GENERATION



6-300mm² Crimping capacity
40mm mod. Cutting Range
64mm dia. Round punching

*See Page B31 for Accessories

6 Tonne Universal Tool - Pistol Grip - Klauke

Part No. EK60UNVCFM

- One head for crimping, cutting and punching
- Ideal for field operations where all common jobs can be carried out with just one tool
- All tool data can be viewed using on-tool display and i-press app

Features

- Makita battery system
- All data can be easily read via Bluetooth
- Universal head with flip top style, rotatable 350°
- One-button controlling all tool functions
- Safety: Automatic retraction after operation completed
- 2 stage hydraulic system with fast feed and power stroke

Order Information

Part No.	Description
EK60UNVCFM-0	Tool skin and case
EK60UNVCFM-K	Tool, 2 x 4.0Ah batteries, charger, and case

- Balanced centre of gravity
- LED for work area illumination
- Battery charge and service display
- LED Display

Technical Data

Crimping Force (T)	6
Crimping Range (mm ²)	6-300
Cutting Range (mm)	max. 40 diameter (See page 31 for adapter)
Punching Capacity (mm)	Up to 64 dia. round (See page 31 for adapter)
Battery	Makita 18V 4.0Ah, Li-Ion*
Charging Time (min)	36
Weight (kg)	4.8 including battery

Klauke®
NEXT GENERATION



6-300mm² Crimping capacity
40mm mod. Cutting Range
64mm dia. round punching

6 Tonne Universal Tool - In-Line - Klauke

Part No. EKM60UNVCFM

- One head for crimping, cutting and punching 330°
- Ideal in the assembly field where all common jobs can be carried out using one tool
- All tool data in view thanks to display and i-press

Features

- All data can be easily read via Bluetooth
- Quality assurance via visual and audible signals
- One-button controlling all tool functions
- Universal head flip top style, rotatable
- Balanced centre of gravity

Order Information

Part No.	Description
EKM60UNVCFM-0	Tool skin and case
EKM60UNVCFM-K	Tool, 2 x 1.5Ah batteries, charger, and case

- LED for work area illumination
- 2-stage hydraulic system with fast feed and power stroke
- Automatic retraction when operation is complete
- LED Display

Technical Data

Crimping Force (T)	6
Crimping Range (mm ²)	6-300
Cutting Range (mm)	max. 40 dia. (See page 31 for adapter)
Punching capacity (mm)	up to 64 dia. round (See page 31 for adapter)
Battery	Makita 18V 1.5Ah, Li-ion*
Charging Time (min)	15
Weight (kg)	3.0 including battery

*See Page 19 for battery and charger information



Makita 230VAC Rapid Charger
Part No. DC18RC



Batteries, Chargers and Accessories

18V Charger - Makita

Part No. DC18RC

Features

- Integrated L.E.D.
- Battery charge level indicator allows user to monitor battery charge.
- Impact-resistant outer case and shock-absorbing inner-liner are engineered to protect the battery.
- Sixteen contact terminals maintain a constant connection with the tool to help prevent power loss or fluctuation, even during high-vibration applications.
- Battery resists self-discharge and remains ready for use even after long periods of storage.

- Star protection computer controls - includes overload protection, over-discharge protection and over heat protection.
- If the battery reaches a certain level of heat it will cut power to the tool, protecting the tool and battery from overheating.
- Forced air cooling fan - cools the battery to minimise charging time.
- Digital power display identifies the condition of the battery and charging condition.
- Warranty: 2 Years Warranty Covered By Makita Australia.

10.8V Charger - Klauke

Part No. LGML1AU

Charger for Klauke Battery RAML1

Features

- 230VAC Charger
- Charges Klauke 10.8V batteries

EK50MLAU
Mini Crimper



Makita & Klauke Batteries

Older Style KLAUKE Batteries available on request

Battery	Makita BL1815N-L	Makita BL1830B	Makita BL1840B	Makita BL1850B	Klauke RAML
Voltage (V)	18	18	18	18	10.8
Amp (Ah)	1.5	3.0	4.0	5.0	1.5
Charge Time (min)	15	22	36	45	40
Weight (kg)	0.6	0.7	0.7	0.7	0.3

Adaptor, Makita Platform to Milwaukee Battery - TEN

Part No. MMA18



Makita Battery Platform

Adaptor

Milwaukee Battery



Tool Strap - TEN

Part No. TENM703

- Quality Tool Strap Ideal for Battery Tools
- 2m Web Strap complete with Snap Hook





Cutters, Hand Operated up to 85mm

- Two stage double acting hydraulics
- Ram extends on both open & closed operation
- Manual pressure release at any stage
- Flip top latch head
- Replaceable blades



Part No.	HC-20A	REL-58MC	REL-2000MC	HC-40A	HSG45	HSG85
Head Rotation (°)	180	180	360	180	360	360
Cutting Force (T)	6.0	5.3	8.8	8.0	6.0	6.0
Safety Valve	Yes	Yes	Yes	Yes	Yes	Yes
Length (mm)	390	400	610	560	560	680
Maximum Cutting Capacity OD (mm)						
Cu / Al	20	25	50	40	45	85
ACSR	20	25	50	28	45	X
Wire Rope	16	25	25	22	25	X
Standard Guy Wire	16	22	19	15	22	X
ReBar, Ground & Anchor Rods	13	16	19	13	20	X
Soft Steel Bolts	16	16	32	13	20	X
Specific Features	Double Stage Hydraulic design	Auto-Retract, No Disassembly to Replace Moving Blade	Magnetic Reservoir traps contaminants, Release at any Stage	Double Stage Hydraulic design	Auto-Retract, Handle Locking Mechanism	Auto-Retract, Handle Locking Mechanism
Storage Device Supplied	Carry Bag	Carry Bag	Carry Bag	Carry Bag	Steel Case	Steel Case
Weight (kg)	2.8	1.8	8.2	6.0	4.9	6.8



Cutters, Remote Head up to 105mm



Part No.	SDG105C	SDG852C	SDG45C	SDK20P33MC	SDK85C
Type	AL/CU/SWA	AL/CU/SWA	ACSR/AL/CU	ACSR/AL/CU	AL/CU/SWA
Cutting Range (mm)	max. 105 OD	max. 85 OD	max. 45 OD	max. 20 OD	max. 85 OD
Cutting Force (T)	12	6	6	1.5	3
Operating Pressure (PSI)	10,000	10,000	10,000	10,000	10,000
Length (mm)	432	445	340	202	450
Weight (kg)	7.7	4.3	3.8	2	5.2



**Breaking blades?
Solution - RC-32ACSR
AL/CU/ACSR/ST
CUTTERS**

Ratchet Cutters - ACSR - Steel - Copper - Aluminium

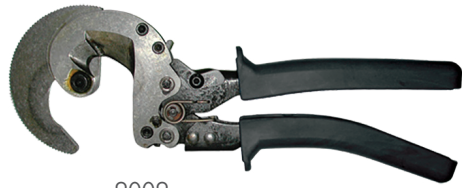
Part No. Various

- Suitable for Cutting ACSR - Steel - Copper - Aluminium (See table below)
- From 15mm to 52mm (See table below for cutting capacity of each tool)
- Patented two-step ratchet mechanism requires fewer strokes per cut
- Quick-release lever opens blades easily in every cutting position
- Handle locks in closed position for storage and transportation
- Full ratcheting cycle and release in all cutting positions
- Ergonomic handles design to maximise cutting leverage

JennyTools

KLEIN TOOLS

ACSR - Steel - Guy Cable Cutters



9009
Klauke
A Textron Company

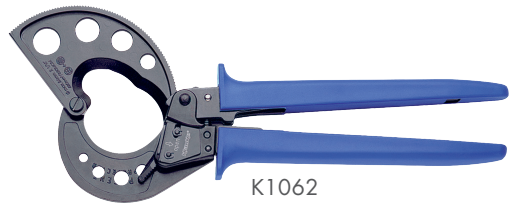


RC-32ACSR



63607

Copper - Aluminium Cable Cutters



K1062



K683T

Part No.	Cable Dimensions Max Diameter (mm)			Length OAL (mm)	Tool Wt (kg)
	Cu	Al	ACSR / St / Guy		
9009	15	18	ACSR - 15 / Steel - 5	267	0.5
63607	18	22	ACSR - 17 / Steel - 10	260	0.7
RC-32ACSR	32	32	ACSR - 20 / Steel - 5	254	0.7
K1062	52	52	-	280	0.7
K683T	32	32	-	260	0.7

RELIABLE EQUIPMENT

Ratcheting Cable Cutter - Reliable

Part No. REL-R-HC

- Jaw keeper prevents the jaws from spreading while under heavy load
- Shear-cut blades
- Ratchet and chain increase cutting pressure as handles open and close
- Moderate pressure opens & closes handles.
- Mechanical advantage over manual cutters

Part No. REL-R-SC

- Cut Copper & Aluminum cable up to 50mm, including rubber or lead covered cable
- Heavy duty jaw and ratchet design provides mechanical advantage over manual cutters
- Does not cut steel



Part No.	Cable Dimensions Max Diameter (mm)			Length OAL (mm)	Tool Wt (kg)
	Cu	Al	ACSR		
REL-R-HC	30	30	30	736	4.5
REL-R-SC	50	50	-	736	4.4

KLEIN TOOLS

Cable Cutter - AL/CU - Klein

Part No. 63035

- Maximum cutting capacity 22mm Aluminium & Copper
- 425mm Length





TEN Group

The Energy Network (Australia) Pty Ltd
ABN 72 093 052 441

QUEENSLAND

65 Wentworth Place
BANYO QLD 4014

P +61 7 3212 8999

W www.tengroup.com.au

E salesqld@tengroup.com.au

TEN HIRE & SRT

91 Basalt Street
Geebung QLD 4034

P +61 7 3212 8999

W www.tenhire.com.au

E hire@tengroup.com.au

VICTORIA

Unit 16, 191-195 Greens Road,
DANDENONG STH VIC 3175

P +61 3 9793 1622

E salesvic@tengroup.com.au

TASMANIA | SOUTH AUSTRALIA

Unit 19, 15 Stanton Place
Cambridge Tas 7170

P +61 499 996 441

E salestas@tengroup.com.au

WESTERN AUSTRALIA

4/15 Baile Road
CANNING VALE WA 6155

P +61 8 9455 5574

E saleswa@tengroup.com.au

NEW SOUTH WALES

Suite F2, Level 1
152-156 Pacific Highway
TUGGERAH NSW 2259

P +61 417 631 443

E salesnsw@tengroup.com.au



SCI QUAL
INTERNATIONAL



SCI QUAL
INTERNATIONAL



SCI QUAL
INTERNATIONAL