



Stringing Rollers and Attachment Brackets

Universal Stringing Roller - SPP

Part No. SPP-1A

- Suitable for distribution and ABC
- Aluminium sheave
- Lightweight high strength heat treated aluminium
- Versatile attachment fittings include side and bottom tags and top ball socket fitting
- Side gate latch can be locked open
- Sheave is profile machined permitting precise sagging of conductor
- High quality permanently lubricated high temperature precision bearings

Part No. SPP-1A-DI

- Same Specifications as SPP-1A
- Ductile Iron sheave (SPP-1A-DI)
- Ideal for Pulling Steel conductor (e.g. 3/12 Steel) or steel catenary

* Ball Socket



* Centre Tab



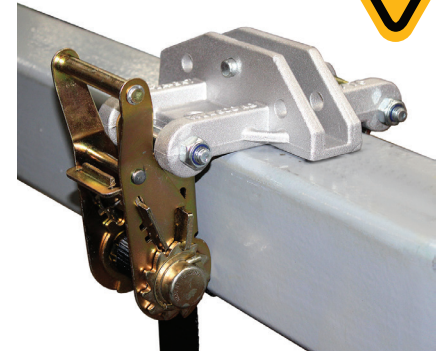
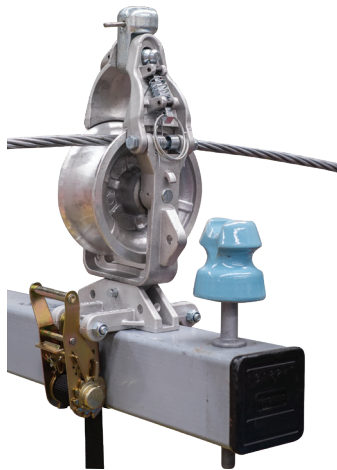
Part No.	Sheave Material	Maximum Conductor OD (mm)	WLL* (kg)	Weight (kg)	Bottom of Groove Diameter (mm)	Overall Height (mm)	Overall Width (mm)
SPP-1A	Aluminium	50	1130	4	110	370	205
SPP-1A-DI	Ductile Iron	50	1130	5	110	370	205

*WLL 1130kg when suspended from ball socket fitting or mounted on centre tab

Universal Roller Bracket - SPP

Part No. SPP-1A-BKT

- Versatile mounting bracket for cross-arms and poles
- Frame made from Cast Aluminium
- Lightweight, easy to install
- Heavy Duty Strap and Zinc Plated Ratchet Assembly
- 3 Mounting holes for various configurations
- Ball pin to secure roller
- Suits SPP-1A & SPP-1A-DI Rollers

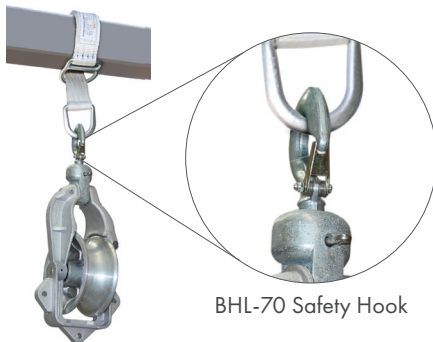


Part No.	Min Cross Arm Size (mm)	Suit Poles OD (mm)	WLL (kg)	Wt (kg)
SPP-1A-BKT	100 x 100	200-470	500	2.0

SPP-1A & SPP-1A-DI Rollers sold separately to SPP-1A-BKT Roller Bracket

Ball Clevis Socket Fittings

Part No. Various



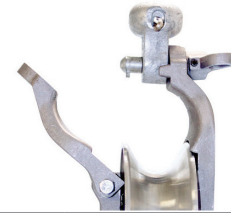
Part No.	BC-70	BEL-70	BHL-70	SPP-1-YC
Description	Ball Clevis	Oval Eye Ball	Safety Hook	Y Ball Clevis
WLL (kN)	70	70	70	70
Weight (kg)	0.55	0.4	0.55	0.85



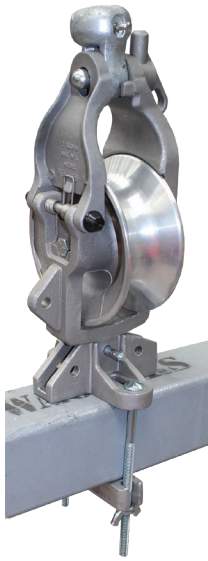
Universal Stringing Roller

Part No. SPP-1A-SB

- "Pull & Turn" style release gate
- Suitable for distribution & ABC
- Sealed ball bearings



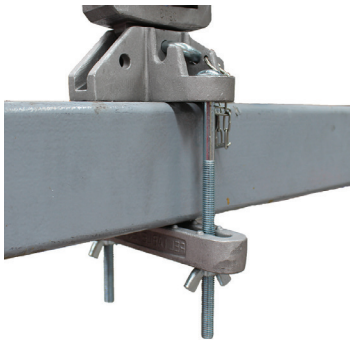
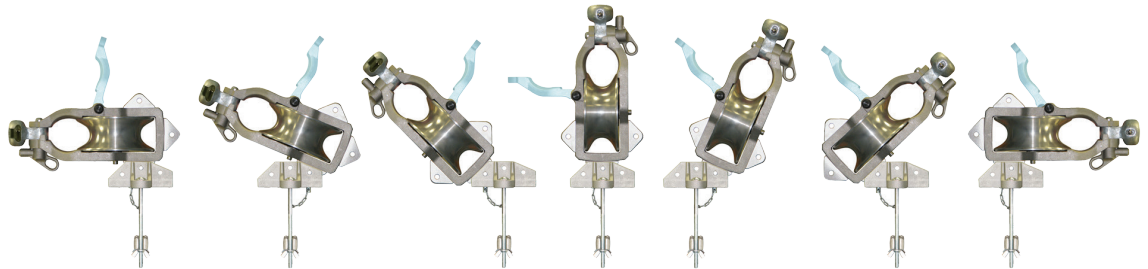
[Click to view Pull & Turn Release Gate](#)



Shown mounted on SPP-1A-CAB Cross Arm Bracket

Part No.	Maximum OD Conductor (mm)	WLL (kg)	Wt (kg)	Bottom of Groove Diameter (mm)
SPP-1A-SB	50	1130	4.1	110

Universal Stringing Roller Mounting Configurations

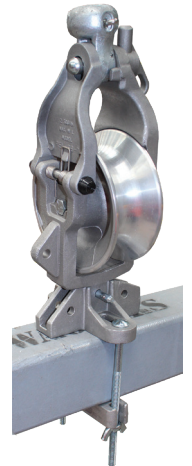


Cross Arm bracket

Part No. SPP-1A-CAB

Crossarm mount bracket to suit up to 127mm wide x 152mm deep Cross-arms

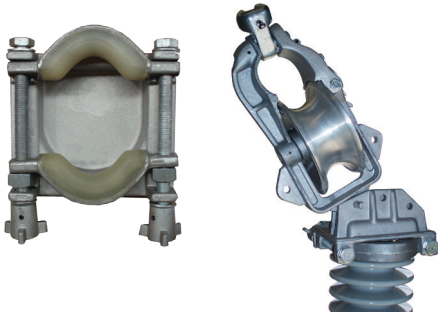
- Includes pin for securing universal roller
- NOTE: Refer Load ratings below*



Tie Top Post Insulator Bracket

Part No. 1A-2A

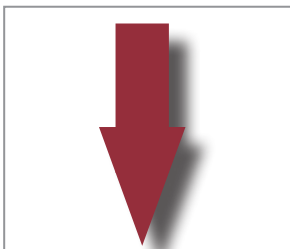
- Manufactured from cast aluminium with urethane jaws
- Easy to operate reverse twist knobs
- Suits maximum insulator 123mm OD neck



Part No.	Max Insulator Throat (mm)	WLL** (kg)	Wt (kg)
SPP-1A-2A	123	Refer Load ratings on adjacent page*	2.6

** Refer Insulator minimum failure load when considering the WLL

Universal Roller Bracket - Load Rating



LOAD DIRECTION



	1	2	3	4	5	6
SPP-1A-BKT* (WLL - kg)	500	500	500	500	500	500
1A-2A* (WLL - kg)	1130	1130	1130	500	500	500
SPP-1A-CAB* (WLL - kg)	1130	1130	1130	500	500	500