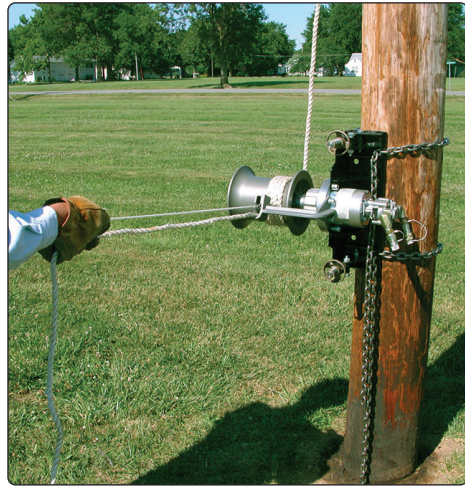




Winches - Overhead - Chance

Capstan Winches - 454kg



Hydraulic Winch shown with Rope Lock (sold separately)

Chance Capstan Winches - 454kg Capacity

Chance Capstan Winches are available for all on-site situations.

Hydraulic - Powered by 700bar (10,000psi) Hydraulic Pump

230V AC - Plug into to any single phase power outlet or a truck inverter

Petrol - Utilise independently of all other power supplies

Improved design features a multi-planetary drive/backstop clutch, assembled on the centre shaft of the steel gear-case with full-length internal teeth.

This design handles more rugged conditions, extends life and reduces maintenance

For improved load control, steel capstan drum features nickel-plated rope surface, larger radius at load-line wrap and rope hook.



Petrol Winch shown with Foot Switch (included)

Versatile Application

Lightweight, powerful portable winches move heavy weights and tackle difficult to access tasks, including:

- Pulling underground and indoor cable
- Stringing and tensioning conductors
- Lifting transformers



Honda 35cc 4 Stroke Engine

- Hoisting heavy insulator strings
- Tower erection
- Pulling wheeled equipment over obstacles

Hydraulic Winch - 700bar (10,000psi)

Part No. C308-1180

Capacity (kg)	Speed at Max Load (m)	Source required for speed	Wt (kg)
454	28.3	30lt per min @ 10,000psi	12.9

Foot Switch not Included - see accessories on next page

Electric Winch - 230V AC

Part No. C308-1171

Capacity (kg)	Speed at Max Load (m)	Source required for speed	Wt (kg)
454	6.4	7 amps motor current	22.5

Includes Foot Switch

Petrol Winch - Honda 35cc 4-Stroke

Part No. C308-1190

Capacity (kg)	Speed at Max Load (m)	Source required for speed	Wt (kg)
454	12.2	7,000rpm	20.9

Includes Foot Switch

See following page for available accessories



Chance Winch Accessories



Rope Lock Device

Part No. C308-0856

- Automatically supports load if rope is released
- Accepts 12.7mm to 19.0mm rope
- Includes 2 mounting bolt, washers and lanyard



Universal Mounting Bracket

Part No. C308-0925

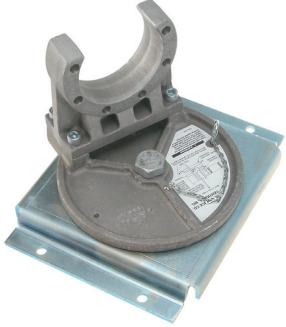
- Recommended for petrol Winch
- Can be bolted down or uses two C417-0346 Chain Clamps (below) for mounting on poles, angles and beams



Chain Clamp

Part No. C417-0346

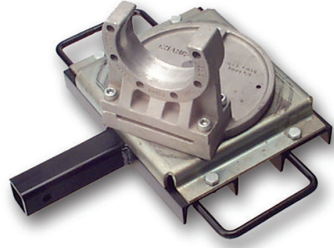
- Recommended for above Universal Bracket
- Use two Chain Clamps for Universal Bracket (above)
- 2.15m long



Swivel Base Truck Mount

Part No. T308-1506

- Recommended for Electric and Hydraulic Winches
- Weight: 10.4kg



Swivel Base Truck Mount & Hitch Mount

Part No. PSC3081563

- Recommended for Electric and Hydraulic Winches
- Weight: 28.1kg



Foot Switch - Hydraulic

Part No. C308-0685

- Use for Hydraulic Winch
- Weight: 10.9kg