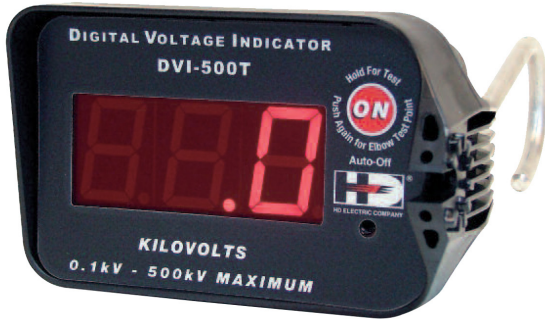


Digital Voltage Indicator Kit

Part No: DVI-500T-50-K02



**Transmission,
Distribution
Overhead &
Underground**



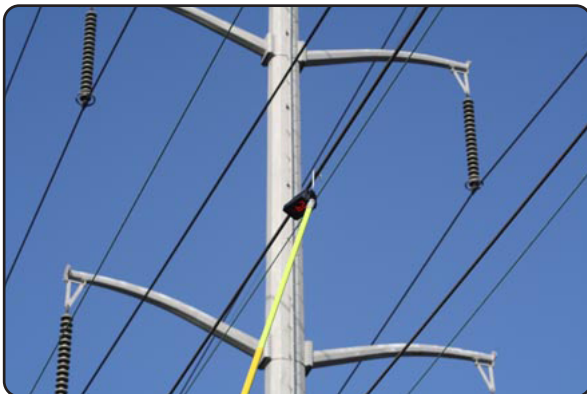
**Designed for
Transmission and
Distribution Networks
in both Overhead
and Underground
applications**

The New DVI-500T is designed to be used on both transmission and distribution networks in both overhead and underground applications. The DVI-500T indicates voltage from 0.1kV – 9.9kV and from 10kV - 500kV with no range selector switch or settings required, making it the most user friendly indicator in the market. Voltage is displayed on a large 38mm LED display with a 3-digit readout. In addition, an audible alarm alerts the user to the presence of voltage above 100VAC. DVI are auto shut-off and will turn off after 4 minutes of inactivity.

DVI has a built-in self test, activated by pressing and holding the ON button. For a test using an external voltage source, the PT-DVI Voltage Indicator Tester should be used before and after each test to verify proper operation.

Two overhead probes are supplied with the DVI-500T - a large 150mm overhead hook probe for transmission system use (HP-DVI-6) and a smaller 50mm overhead hook probe for distribution system use (HP-DVI-2). Simply attach the correct probe for the proper overhead application. Use of an appropriate length hotstick is required for all overhead and underground applications.

The use of an underground probe (IEP-DVI-5) is required for underground or pad mount applications as well as any applications up to 21 kV phase to earth where the DVI will be used in close proximity to grounded conductors or surfaces. The DVI-500T can be used in underground applications to measure elbow test points using the underground probe. To switch the DVI-500T to Test Point Mode, simply press the ON button again and a flashing decimal appears in the lower right corner of the display.



DVI-500T Digital Voltage Indicator In Use



DVI-500T Measuring Elbow Test Point

FEATURES

- For use on system voltages up to 800kV (reads up to 500kV phase to earth)
- No range selector switch or settings required
- Large LED display indicates the phase to earth voltage level
- Display is easy to read in all lighting conditions
- Voltage readout allows the user to distinguish between nominal and induced voltages
- Audible indication when voltage is detected
- Measure elbow test points with the DVI-500T
- Built-in universal spline for standard hotstick attachment
- Built-in self test to verify proper operation
- Auto shutoff with low battery function
- Powered by a field replaceable 9V alkaline battery
- Compact, rugged and lightweight polycarbonate housing

Digital Voltage Indicator Kit

Part No: DVI-500T-50-K02



PT-DVI Voltage Indicator Tester



IEP-DVI-5 Accessory - Required for Underground Applications



DVI-500T-K02 Kit



DVI-500T

DVI-500T-K02 KIT INCLUDES

DVI-500T-K02	
DVI-500T	Voltage Indicator up to 500kV
PT-DVI	Proof Tester for Digital Voltage Indicators
IEP-DVI-5	Underground Bushing Probe, 15, 25 & 35 kV Class
HP-DVI-2	Overhead Hook Probe, 2" Diameter Opening
HP-DVI-6	Overhead Hook Probe, 6" Diameter Opening
CS-DVI-5	Rugged Plastic Case for DVI-500

DVI-500T SPECIFICATIONS

Operating Voltage Range	0-500kV phase to earth (0.1kV – 9.9kV and 10kV to 500kV)
Operating Frequency	50Hz or 60Hz systems
Operating Temp. Range	-40°F to + 120°F (-40°C to +49°C)
Dimensions	Housing: 110mmH x 180mmW x 110mmD
Overhead Probes	HP-DVI-2: 50mm long HP-DVI-6: 150mm long
Weight	0.62kg with small overhead probe
LED Height	38mm
Accuracy	Typical overhead line accuracy in compact overhead three phase configuration +/- 10%, other applications up to +/- 25%
Power Supply	Field replaceable 9-volt alkaline battery
Battery Life	Up to 100 readings with 9V alkaline battery
Standard Overhead Probes	(for overhead use only) HP-DVI-2 and HP-DVI-6
Carrying Case	CS-DVI-5 Rugged Plastic Carrying Case
Optional Underground Probe	IEP-DVI-5 - for 15, 25 and 35kV Class