

## Pole Test Equipment

### Polux 5 Power Pole Testing Equipment

POLUX 5 is the fifth generation of Polux technology.

Based on more than 25 years experience leading its sector, this newer version is a revolution in terms of ergonomics: much smaller & lighter than the previous generations and equipped with an impressive pole fixing system.

Very easy to use, measurements can now be taken below the ground line level area or any other part of the pole.

# POLUX 5

Non-destructive technology for security and maintenance of in-field wood poles



#### POLUX 5 PROCESS

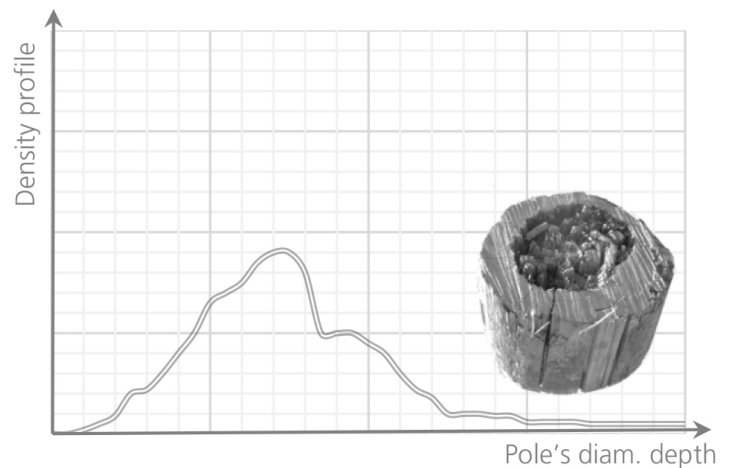
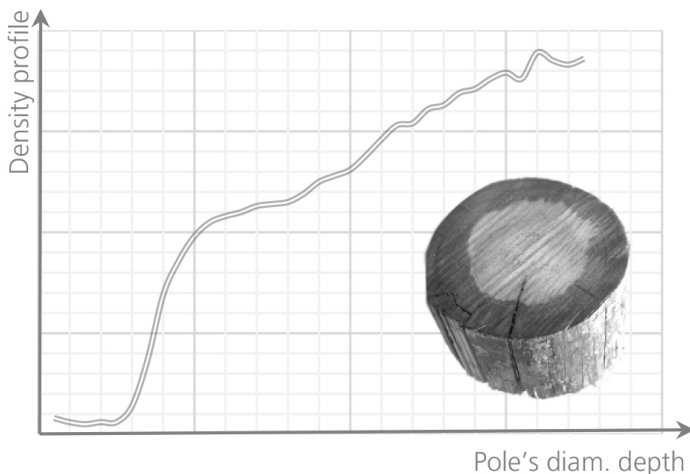
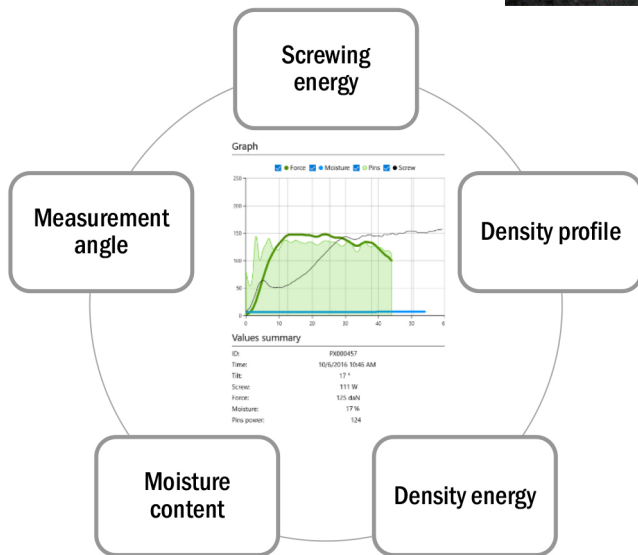
POLUX 5 is set on the pole thanks to a screw. The energy is recorded during the whole screwing process.

The angle of the device on the pole is stored.

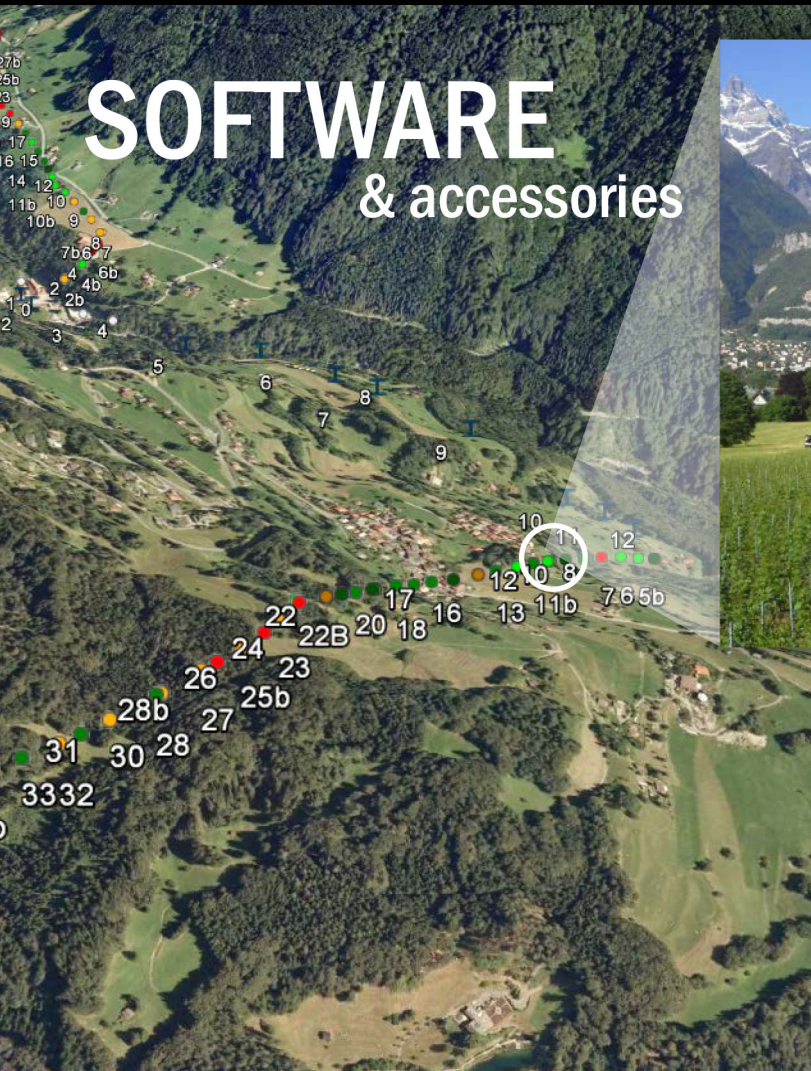
Once the device is set on the pole, the measuring pins are automatically driven within the pole and record both the penetration force and the energy required.

Moisture content is stored when the measuring pins are fully within the wood.

#### Immediate and Objective Results







# SOFTWARE & accessories



## In-field Data Collection

Picus software is entirely designed for Polux and any other data collection including GPS, visual inspection, pictures, Datamatrix etc.



## Research and Development

Polux technology, as a scientific development, takes part in many international projects in order to optimize the diagnostics for each environment.

Destructive tests based on EN14229 or ANSI standards and data collection are the key factors for Polux technology development.



## Polux 5 Specification

<b>Dimensions</b>	394 x 160 x 82mm
<b>Weight</b>	2.8kg
<b>Battery</b>	Li-Ion 18V
<b>Wireless</b>	Bluetooth
<b>Inclinometer</b>	Integrated

