



Voltage Detector

Personal Voltage Detector

Part No: VWP-20HFR

Worn on the outside of your clothing at mid-torso, the V-Watch Personal Voltage Detector provides that extra level of safety by detecting and alerting you to the presence of electrical fields or energised electrical equipment. In emergencies, crews can move in safely to quickly restore power to customers.

The V-Watch Pro model includes a mute feature and comes in a flame resistant carrying case lanyard that is worn around the neck during use.

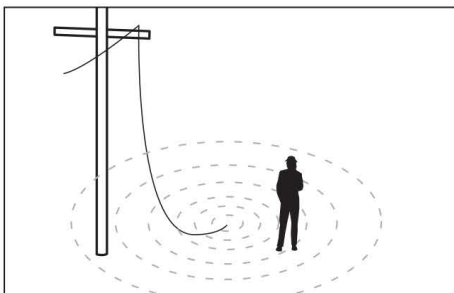
- Alerts user to proximity of high voltage
- Audible and visual alarms increase in frequency the closer the user gets to energised equipment
- Typical V-Watch warning distance is about 7 feet (2.13m) from a 4kVAC conductor
- Provides another level of safety for storm restoration workers and first responders
- Low battery indicator
- Field replaceable 9V battery
- Rugged protective housing
- Built-in self test
- Lightweight
- Pro model includes mute feature
- Hi-Vis safety green Flame Resistant carrying case lanyard



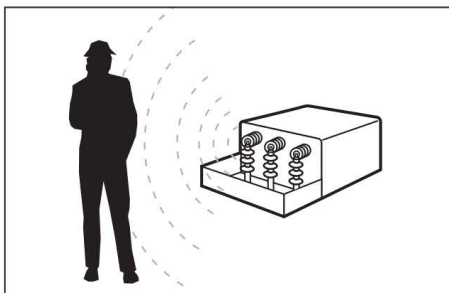
Hi-Vis Flame Resistant Carrying Case Lanyard



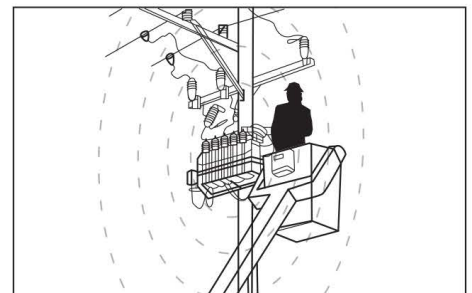
- **Sensitivity:** Factory Set at 50/60 Hertz sensing threshold (first beep). The V-Watch will only detect AC voltage. Do not use below 2400 Volts line-to-ground.
- **Typical Warning Distance:** About 7 feet (2.13 m.) from a 4kV (2.4kV line-to-ground) AC conductor.
- **Operating Frequency:** 50Hz/60Hz
- **Battery:** 9V alkaline 1604A, IEC 6LR61.
- **Beeper Sound Pressure Level:** 100 decibels
- **Water Withstand:** Protected from falling rain per IEC-529, Level 2
- **Weight (with battery):** 147g
- **Dimensions:** 8.89 cm. x 7.32 cm. x 3.18 cm
- **Voltage Range:** 2400VAC line-to-ground and above



DETECTS DOWNED ELECTRICAL CONDUCTORS



DETECTS EXPOSED CONDUCTORS INSIDE ELECTRICAL EQUIPMENT



DETECTS ELECTRICAL FIELDS IN AERIAL BUCKETS

