



SWITCHBOARD MANUFACTURING TOOLS

PUNCH DRIVERS | CRIMPERS | CUTTERS | DIES



Quality Tools, Equipment & Line Materials for the Energy Industry.

CONTENTS

Punch Drivers - Punch & Dies 3

 Punch Driver, Hand Hydraulic.....3

 Keyway Punch - Hand operated.....3

 Punch Driver, Battery Powered - Greenlee4

 Speed Punch & Dies - Greenlee.....5

 Speed Punch Knock-Out Kit - Metric ISO 16 - 405

 Busbar Bender, Hydraulic.....6

 Punch Head, Hydraulic.....6

 Busbar Cutter, Hydraulic.....6

Battery Powered Crimpers 7

 5 Tonne Crimper & Cutter.....7

 6 Tonne Dies7

 5 Tonne Crimper8

 Cembre Style Dies.....8

 3.5 Tonne Crimper.....9

 Series 4 Dies Suits9

 6 Tonne Universal Tool - In-Line 10

 50 Series Mini Crimper, Electromechanical..... 11

 50 Series Dies..... 11

Battery Powered Cutters..... 12

 20mm Cutter, ACSR/AL/CU 12

 32mm Cutter, AL/CU..... 12

 50mm Cutter - AL/CU 13

Batteries, Chargers and Accessories..... 13

 Makita 18V Charger 13

 Klauke 10.8V Charger..... 13

 Makita & Klauke Batteries 13

Cable Stripping..... 14



See "Switchboard Commissioning" catalogue for all Safety Equipment and PPE

TEN is your complete source for tools and construction equipment for the energy industry.

We only choose to work with quality brands that deliver industry designed, tested and proven products that are fit for purpose and offer the best lifetime value for our customers.

Part of TEN's offering includes equipment for Electrical Switchboard Manufacturing, which includes but not limited to Hole Punching equipment and Cable crimping & Cutting Tools.

TEN also supplies a range of Electrical Switchboard Commissioning Safety equipment & PPE, along with a range of 1000V hand & battery tools.

For further information on this range or if you are interested in TEN's full range of tools & equipment, visit our website at tengroup.com.au, email us at sales@tengroup.com.au or call on 07 3212 8999

Various products shown in this catalogue are covered by patents, have patents pending, or are registered designs. Various marks in this catalogue are registered trademarks. Dimensions are nominal and should not be relied on for engineering purposes. Specifications are subject to change without prior notification. TEN reserves the right to supply alternate brands at its discretion. Supply of a product is subject to availability. Unless required by law the company cannot accept any responsibility for any loss, damage or consequence resulting from the use of this publication. Purchasers should make their own enquiries prior to placing an order regarding the fitness and suitability of the products advertised. Photographs shown are for illustrative purposes only. The information in this brochure is copyright and should not be reproduced without prior written consent.

Front page image: Switchboard room in large commercial building, Kgbo, CC BY-SA 4.0 <<https://creativecommons.org/licenses/by-sa/4.0/>>, via Wikimedia Commons
 ©2022, TEN Group, The Energy Network.



**Part No. ISOPD16-50
Mild and Stainless steel
Punch and Dies**

Punch & Dies Set (ISOPD16-50) includes:
7 x Round, 3 Crown ISO type, Punch & Dies
(* Indicated in table below)
1 x 9.5 x 80mm &
1 x 19 x 138mm Draw studs
1 x 20, 1 x 34 & 1 x 44mm Spacers

Punch & Draw Stud Part No's

Part No.	Hole Size (mm)	Draw Stud (mm)	Part No.
ISOPD-16	16*	3/8" (9.5)	DS3-8
ISOPD-20	20*	3/8" (9.5)	DS3-8
ISOPD-22.5	22.5*	3/8" (9.5)	DS3-8
ISOPD-25	25*	3/8" (9.5)	DS3-8
ISOPD-32	32*	3/4" (19)	DS3-4
ISOPD-40	40*	3/4" (19)	DS3-4
ISOPD-50	50*	3/4" (19)	DS3-4
PD-75	75	3/4" (19)	DS3-4
PD-50	90	3/4" (19)	DS3-4

Spacer Part No's

Part No.	Spacer (mm)
DSS-20	20
DSS-34	34
DSS-44	44

Punch Drivers - Punch & Dies

Punch Driver, Hand Hydraulic

Part No. SB-10B

The SB-10B is a Hand Pump with a Remote Punching Head attached to a flexible Hose Lead. Often referred to as a Chassis Punch, this Unit is a Premium Quality Punch Kit.

- 1 x SB-10B Hand Hydraulic Punch kit
- 1 x Steel Carrying Case



SB-10B Punch Driver shown with Punch/dies, draw-studs & spacers. (sold separately)

Technical Data

Part No.	SB-10B
Output Force (kN)	8.8
Pressure (PSI)	10,000 (700bar)
Dimensions (mm)	370 x 220 x 130
Weight (kg)	9.0

Punching Capacity

Material	Punch Size (mm) OD	Material Thickness (mm)
Mild Steel	115.5	3.2
Stainless Steel	63.5/115.5	3.2/1.6

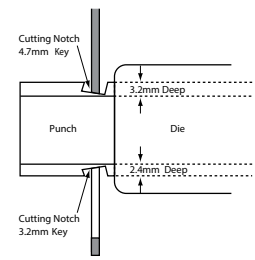
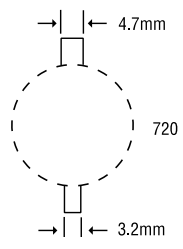
Square Punch & Dies available upon request

Keyway Punch - Hand operated



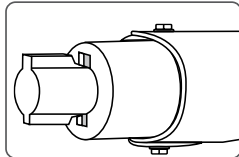
Part No. 720

Eliminates time-consuming hand sawing and filing making keyways for push-button switches
Use as a nibbler to make wider or deeper keyways in up to 3.2mm mild steel
Punches 3.2mm or 4.7mm keyways for 22.5mm or 30.5mm push-button holes



Ordering information

Part No.	Description	Weight (kg)
720	Keyway Punch	1.27
26536	Replacement Punch	-
26538	Replacement Die	-



Punch and Die



Punch Driver, Battery Powered - Greenlee

Part No. LS100FLEXCFM

Inteli-PUNCH™ Driver – Greenlee - Made in Germany

The 11-Tonne Battery powered Punch Driver from Greenlee is the fastest, most powerful knockout driver available on the market today.



- Auto-Retract Technology Patent-Pending - Pressure-sensing technology accurately detects punch completion and automatically retracts the ram, for longer tool life
- Time Saver - maximum cycle time of 8 seconds
- Punch up to 161.9mm size holes in mild steel and 115.4mm holes in stainless steel
- 360° Rotating Head - Rugged, patent-pending swivel design to punch at any angle
- Compact, Ergonomic Design - Ergonomic tapered grip for easy one-handed operation
- Gator Eye® Compatible - with i-Press™ software, monitor tool performance including peak forces and number of cycles
- Compatibility - Works with all Greenlee knockouts. Same draw studs used with other Greenlee Hydraulic punches
- Lightweight - 2.63kg
- Led light for dark areas

Technical Data

Output Force (kN)	11
Battery	Makita 18V - 4.0Ah*
Charging Time (min)	36
Weight (kg)	2.8 with Battery

Punching Capacity

Material	Punch Size (mm) OD	Material Thickness (mm)
Mild Steel	12.7 to 115.4	3.4
	12.7 to 115.4	2.6
Stainless Steel	12.7 to 89.9	3.4
	12.7 to 115.4	2.6

* See page 13 for information on batteries and chargers. See adjacent page for the full range of punch & dies.

See opposite page for Speed Punch™

Order Information

Part No.	Description
LS100FLEXCFM-K	1 x Punch Driver 2 x 18v Makita Batteries 1 x Charger Draw Stud 19mm to 9.5mm (52042827) & Short Spacer (50032488)

* Draw Stud 19mm 52045298 is required for punch sizes 50.8mm (ISO50) & 63.5mm (ISO60)

NOTE: Above draw stud suits standard punch & dies and are not compatible with the Speed Punch & Dies on opposite page.





Speed Punch & Dies - Greenlee

Punch Holes in Mild & Stainless Steel
UP TO 3X FASTER

SAVE TIME & MONEY WITH EVERY PUNCH



SPEED LOCK

Quickly secures the system in place - more holes, less time.

RUGGED GROOVES

Holds up on the job - no more damaged threads.

NO THREAD PUNCH

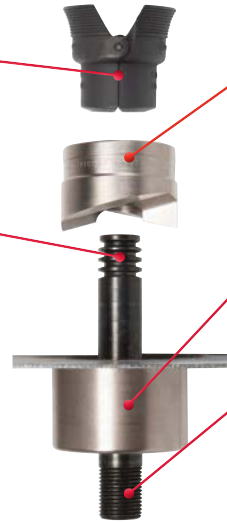
Easily slides on/off draw stud.

EXTENDED DIE HEIGHT

No need for spacers.

STANDARD DRAW STUD END

Works with existing hydraulic and battery-operated punch drivers.



Speed Punch Knock-Out Kit - Metric ISO16 - 40

Part No. 52055439SET

For punching holes in mild steel, aluminium, fiberglass, and plastic

- Capacity:** Mild Steel Max 3.0 mm
- Diameter:** Actual hole sizes: 16.2mm to 40.5mm (ISO)
- Driver:** Use with Greenlee Punch Drivers: LS100 - Battery-Powered Driver, or Hydraulic Drivers (REQUIRES ALTERNATE LONG DRAW STUDS (7212SP13 & 7212SP12))
- Kits Includes:**
 - 1 x each (Punch & Die) ISO-16, ISO-20, ISO-25, ISO-32, and ISO-40
 - 1 x 3/8" Speed Lock & 1 x 3/4" Speed Lock
 - 1 x 3/8" x 97mm Std. Draw Stud
 - 1 x 3/4" x 122mm Std. Draw Stud
 - 1 x Plastic Storage Case.
- ISO:** ISO-16 to ISO-63 Diameter
- Material:** Black Oxide Finish
- Pilot Hole:**
 - 3/8" Draw Studs: 12.7mm PILOT HOLE
 - 3/4" Draw Studs: 22.2mm PILOT HOLE
- Package:** Plastic Storage Case
- Weight:** 3.39 kg



SCAN or CLICK to View Operation Video

Punch & Dies Kit ISO 16-40



Kit Replacement Parts for ISO 16 to 40mm (52055439SET)

Punch Part No.	Description/Hole Size (mm)
52055431	Punch & Die - ISO-16 / 16.2
52055432	Punch & Die - ISO-20 / 20.4
52055434	Punch & Die - ISO-25 / 25.4
52055435	Punch & Die - ISO-30 / 32.5
52055436	Punch & Die - ISO-40 / 40.5

Accessories

Part No.	Description
52055439	3/8" SPEED LOCK & 3/8" Draw Stud (12.7mm Pilot Hole)
52055440	3/4" SPEED LOCK & 3/4" Draw Stud (22.2mm Pilot Hole)
KKSPISO16B63	Plastic Storage Case

Larger ISO Punch & Dies Sizes

Die Part No.	Description/Hole Size (mm)
52055437	Punch & Die - ISO-50 / 50.8
52055438	Punch & Die - ISO-63 / 63.5



Stainless Steel Standard and square Punch & Dies Option Available - Contact TEN for further Information



Punch Head, Hydraulic

Part No. SB-80C

The SB-80C Tower & Busbar punch is ideal for punching through steel tower legs & busbar, with a max hole diameter of 20.5mm.

The punch is sold standard with 4 punch & dies (10.5, 13.5, 17.5 & 20.5mm)

Additional accessories include die fixing tool, Allen key and Steel Carrying Case

Features

- Body manufacture from high strength steel
- Quick smooth punching with no burring
- Positioning plate for precise punch location
- Include quick coupler for easy pump assembly
- Operate with a single acting hydraulic pump

Technical Data

Part No.	SB-80C
Output Force (T)	31
Pressure (PSI)	10,000 (700bar)
Tool Dimensions (mm)	250 x 100 x 370
Case Dimensions (mm)	440 x 380 x 160
Throat Depth (mm)	80
Weight (kg)	13.5

Punching Capacity

Material	Punch Size (mm) OD	Material Thickness (mm)
Mild Steel	20.5	10
CU/AL	20.5	13

NOTE: Optional punch & dies sold separately - 8.5, 11.5, 15.5 & 18.5mm

Contact TEN for information on High Pressure Hydraulic Pumps and hoses



SB-80C shown stored in steel carry case



10.5, 13.5, 17.5 & 20.5mm punch & dies included in kit

For further information on Busbar Benders and Cutters, please contact TEN

Busbar Bender, Hydraulic

Part No. BB-200C

Features

- Output force: 20T
- Pressure: 10,000psi
- Bending Capacity: 200 x 12mm
- Weight: 28kg



Busbar Cutter, Hydraulic

Part No. BC-200V

Features

- Output force: 30T
- Pressure: 10,000psi
- Cutting Capacity: 200 x 12mm
- Weight: 35kg





Battery Powered Crimpers

5 Tonne Crimper & Cutter

Part No. EK425CFM

- Suitable for ABC, 6 to 240mm² Cu & 10 to 300mm² Al
- One handed ergonomic design with single push button operation
- Automatic retraction once crimp is completed
- Autostop function
- LED Light Illuminates working space
- Red LED display and acoustic signal
- High performance 18V Lithium-Ion battery
- Crimp head rotates 360°
- Multi-functional LED indicates maintenance and battery control
- Manual retraction does not rely on battery power

Klauke®
NEXT GENERATION

Order Information

Part No.	Description
EK425CFM-O	Tool skin and case
EK425CFM-K	Tool, 2 x 1.5Ah batteries, charger and case

Ideal for ABC

Multi-function lightweight tool of only 2.6kg



Takes 6T Round Dies

Interchangeable heads - easily change from crimping to cutting

Head Rotates 360°

Ergonomic single push button operation

LED Illumination of workspace

Genuine Makita Li-Ion Battery

Red LED display and acoustic signal in case of error

Also Available in 1000V Insulated Version - for more information contact TEN

Shown in protective carry case (included)

Crimps (mm²)	Cu/Al 240, ACSR 185
Crimping Force (kN)	50
Stroke/Opening Width (m)	40
No of crimps per charge	140 @ 70
Battery	Makita 18V, 1.5Ah, Li-ion*
Charging Time (min)	15
Weight (kg)	2.6 including battery

* See page 13 for information on batteries and chargers. See below for the full range of dies.

6 Tonne Dies

Part No.	Size (mm ²)	Across Flats (mm)	Crimp Width (mm)
Copper			
K6-04.4-CU	6	4.4	5.0
K6-05.7-CU	10	5.7	5.0
K6-06.3-CU	16*	6.3	6.0
K6-07.7-CU	25*	7.7	12.0
K6-09.2-CU	35*	9.2	12.0
K6-10.4-CU	50*	10.4	9.0
K6-11.5-CU	70*	11.5	9.0
K6-14.2-CU	95*	14.2	6.0
K6-16.5-CU	120*	16.5	6.0
K6-18.3-CU	150*	18.3	5.0
K6-20.0-CU	185*	20.0	5.0
K6-23.1-CU	240*	23.1	5.0
K6CUSET-16-240	* 16 to 240 (10 Dies) including 20 compartment metal box		

Aluminium

K6-09.0-AL	10-35	9.0	5.0
K6-13.2-AL	50-70	13.2	12.0
K6-17.3-AL	95-120	17.3	12.0
K6-18.0-AL	150	18.0	12.0
K6-22.0-AL	150-185	22.0	9.0
K6-28.4-AL	240-300	28.4	5.0

ABC

K6-14.0-ABC	25	14.0	9.0
K6-17.3-ABC	35-70	17.3	9.0
K6-21.5-ABC	95-150	21.5	9.0



6 Tonne Die Kits available





Klauke®
NEXT GENERATION

5 Tonne Crimper

Part No. EK50CFM

- Crimps 10 to 185mm²
- ARS means faster crimp cycles (Automatic Retraction Stop)
- All tool data in view thanks to display and ipress app

Order Information

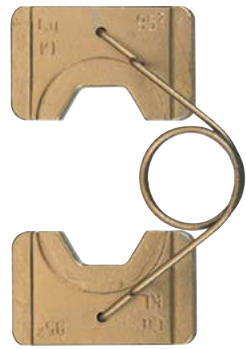
Part No.	Description
EK50CFM-0	Tool skin and case
EK50CFM-K	Tool, 2 x 1.5Ah batteries, charger and case

Features

- All data can be easily read via Bluetooth
- Open head, rotatable 330°
- Visual and audible signals
- One-button controlling all tool functions
- LED for work area illumination
- Simple and safe: Automatic retraction when operation is complete
- Automatic Retraction Stop (ARS) for positioning control in case of multiple crimps
- Always ready-to-use thanks to battery charge and service display

Crimping Force (kN)	50
Crimping Range (mm ²)	10 - 185
Stroke/Opening Width (mm)	17
Battery	Makita 18V - 1.5Ah*
Charging Time (min)	15
Weight (kg)	2.8 including battery

* See page 13 for information on batteries and chargers
See below for the full range of dies



Cembre Style Dies

Part No.	Size (mm ²)	Across Flats (mm)	Die Style
Copper			
M57-50	10	5.7	Cembre
M63-50	16	6.3	Cembre
M77-50	25	7.7	Cembre
M92-50	35	9.2	Cembre
M104-50	50	10.4	Cembre
M115-50	70	11.5	Cembre
M142-50	95	14.2	Cembre
M165-50	120	16.5	Cembre
M200-50	185	20.0	Cembre
ABC			
M140-50	25	14.0	Cembre
M173-50	35-70	17.3	Cembre
M215-50	95-150	21.5	Cembre
Cutting Die			
MB52-50	Cutting Die	10.0	Cembre



Klauke® NEXT GENERATION

Uses 4 Series interchangeable dies
Flip top
Head Rotates 360°

Single push button operation

LED Illumination of workspace

Genuine Makita Li-Ion Battery



3.5 Tonne Crimper

Part No. EK354CFM

- Crimps 6 to 150 mm²
- Slim crimping head - ideal for confined work areas
- All tool data view on display and using ipress app

Features

- All data can be easily read via Bluetooth
- Closed head, flip top style, rotatable 330°
- Visual and audible signals in case of error
- One-button controlling all tool functions
- 2.4kg total weight

Order Information

Part No.	Description
EK354CFM-O	Tool skin and case
EK354CFM-K	Tool, 2 x 1.5Ah batteries, charger and case

- LED for work area illumination
- Always ready-to-use thanks to battery charge and service display
- Simple and safe: Automatic retraction when operation is complete

Crimping Force (kN)	35
Crimping Range (mm ²)	6-150
Stroke/Opening Width (mm)	9
Number of Crimps	approx. 145 at 120 Cu
Battery	Makita 18V 1.5Ah*
Charging Time (min)	15
Weight (kg)	2.4 including battery

* See page 13 for information on batteries and chargers
See below for the full range of dies



Shown in protective carry case (included)



Series 4 Dies Suits

Part No.	Size (mm ²)	Across Flats (mm)	Crimp Width (mm)
Copper			
K3.5-C6	6	4.4	5.0
K3.5-C10	10	5.7	5.0
K3.5-C16	16	6.3	5.0
K3.5-C25	25	7.7	5.0
K3.5-C35	35	9.2	5.0
K3.5-C50	50	10.4	5.0
K3.5-C70	70	11.5	5.0
K3.5-C14	Insulated Sleeve	14.0	5.0
K3.5-C95	95	14.2	5.0
K3.5-C120	120	16.5	5.0
K3.5-C150	150	18.3	5.0

Aluminium K3.5 Dies available - Contact TEN for further information



Klauke®
NEXT
GENERATION

6 Tonne Die Adapter (included)



Shown in protective carry case (included)

6 Tonne Universal Tool - In-Line

Part No. EKM60UNVCFM

- One head for crimping, cutting and punching 330°
- Ideal in the assembly field where all common jobs can be carried out using one tool
- All tool data in view thanks to display and i-press

Order Information

Part No.	Description
EKM60UNVCFM-0	Tool skin and case
EKM60UNVCFM-K	Tool, 2 x 1.5Ah batteries, charger, and case

Features

- All data can be easily read via Bluetooth
- Quality assurance via visual and audible signals
- One-button controlling all tool functions
- Universal head flip top style, rotatable
- Balanced centre of gravity
- LED for work area illumination
- 2-stage hydraulic system with fast feed and power stroke
- Automatic retraction when operation is complete
- LED Display

Technical Data

Crimping Force (T)	6
Crimping Range (mm ²)	6-300
Cutting Range (mm)	max. 40 dia. (See page 31 for adapter)
Punching capacity (mm)	up to 64 dia. round (See page 31 for adapter)
Battery	Makita 18V 1.5Ah, Li-ion*
Charging Time (min)	15
Weight (kg)	3.0 including battery

* See page 13 for information on batteries and chargers
See below for the range of accessories
See page 7 for a full range of 6 Tonne Dies

6-300mm² Crimping capacity 40mm dia. round punching

Accessories/Tool	EKM60UNVCFM
12 Tonne Die Adaptor (included)	Not Applicable
6 Tonne Die Adaptor (included)	UA22
Cutter 40mm ACSR	UCASR
Cutter 40mm Al/Cu	UC40
Punch Adaptor	UA12P (Up to 64mm)
Cutter - Rail Catenary	Upon Request
Cutter - Threaded Rod	Upon Request

Cutting Die
Part No. UCACSR



Cutting Die
Part No. UC40



Punch Adaptor
Part No. UA12P





Klauke®

50 Series Mini Crimper, Electromechanical

Part No. EK50MLAU

- Lightweight Compact design
 - ideal for high volume work
 - switchboard manufacturers
 - automotive wiring harnesses
- High speed crimping time <1.5 seconds
- Automatic retraction



*IS5071 Die
Included with tool

Order Information

Part No.	Description
EK50MLAU	Tool, case, battery, charger and IS5071 die

Lightweight - Tool including battery <1kg

Technical Data

Crimping Force (kN/T)	15/1.5
Crimping Range (mm ²)	0.14 - 50
Crimping Time (s)	<1.5
Battery	Klauke 1.5Ah/10.8V Li-ion (RAML)*
Crimps per Charge	300 @ 10 Cu
Charging Time (min)	40
Weight (kg)	0.96 incl. battery

* See page 13 for information on batteries and chargers
See below for the full range of dies



Shown in protective carry case (included)

50 Series Dies

Part No.	Use	Size (mm ²)
AE501	Bootlace lugs	0.14-6
AE502	Bootlace lugs	10-25
AE503	Bootlace lugs	35-50
BNC501	Stud & shielded sleeves	Coax 58, 59, 62, 71
CR501	Non insulated receptacles	0.25-6
IS501	Insulated lugs, double crimp	0.5-6
IS502	Insulated lugs, single crimp	10-16
IS503	Insulated lugs, double crimp	0.1-1

Part No.	Use	Size (mm ²)
IS5071 *	Crimping, pre-insulated terminals	0.5-6
M50154	Cu tubular lugs - solid conductor	1.5-4
M50610	Cu tubular lugs - solid conductor	6-10
Q501	Cu soulderless & pin term	0.5-10
R501	Cu tubular lugs	0.72 -2.5
R502	Cu tubular lugs	4-10
SB501	Turned pin receptacle, pin connector	0.1-4



SCAN or CLICK to View Operation Video



M50154



BNC501



CR501



SB501



IS502



IS501



R501



AE501



Klauke®
NEXT
GENERATION

Compact
Ideal for confined
work areas
i.e switchboard &
domestic UG pits

Suitable for
ACSR,
Al & Cu



Also Available in 1000V
Insulated Version -
For more information
contact TEN



Battery Powered Cutters

20mm Cutter, ACSR/AL/CU

Part No. ES20CFM

- For cutting Al/St conductors (ACSR), solid Cu cables and laminated copper bus bars
- Extremely robust design and lightweight
- Slim cutting head - ideal when space is critical
- All tool data can be viewed using on-tool display and i-press app

Features

- Makita battery system
- All data can be easily read via Bluetooth
- One-button controlling all tool functions
- Ergonomic balanced centre of gravity
- Open head, rotatable 330°

Order Information

Part No.	Description
ES20CFM-0	Tool skin and case
ES20CFM-K	Tool, 2 x 1.5Ah batteries, charger and case

- LED Display
- Automatic retraction when operation is complete
- LED for work area illumination
- Visible and audible signals
- Battery charge and service display

Technical Data

Cutting Force (kN)	23
Cutting Range (mm)	Max 20 dia. dependent on cable type
Battery	Makita 18V 1.5Ah, Li-Ion*
Charging Time (min)	15
Weight (kg)	2.15 including battery

* See page 13 for information on batteries and chargers

32mm Cutter, AL/CU

Part No. ES32CFM

- Extremely robust design and lightweight
- Slim cutting head - ideal when space is critical
- All tool data can be viewed using on-tool display and i-press app
- Suitable for Al and CU conductors only

Features

- Makita battery system
- All data can be easily read via Bluetooth
- One-button controlling all tool functions
- Effortless working due to balanced centre of gravity
- Open head, rotatable 330°

Order Information

Part No.	Description
ES32CFM-0	Tool skin and case
ES32CFM-K	Tool, 2 x 1.5Ah batteries, charger and case

- Automatic retraction when operation is complete
- LED for work area illumination
- LED display for showing tool data including visible and audible signals
- Battery charge and service display

Technical Data

Cutting Force (kN)	15
Cutting Range (mm)	Max 32 dia. dependent on cable type
Battery	Makita 18V 1.5Ah, Li-Ion*
Charging Time (min)	15
Weight (kg)	2.15 including battery

* See page 13 for information on batteries and chargers

Klauke®
NEXT
GENERATION

Suitable for
Al & Cu
conductors





50mm Cutter - AL/CU SCISSOR STYLE OPEN JAW

Part No. RCB-50Y

- Scissor Style Head
- Ideal for Confined spaces
- Max 600mm²
- 50mm Jaw opening



Order Information

Part No.	Description
RCB-50Y-0	Tool skin & case
RCB-50Y-K	Tool, 2 x 3.0Ah* Makita batteries, charger and case

* See page 13 for information on batteries and chargers

Batteries, Chargers and Accessories

Makita 18V Charger

Part No. DC18RC

Features

- Integrated L.E.D.
- Battery charge level indicator allows user to monitor battery charge.
- Impact-resistant outer case and shock-absorbing inner-liner are engineered to protect the battery.
- Sixteen contact terminals maintain a constant connection with the tool to help prevent power loss or fluctuation, even during high-vibration applications.
- Battery resists self-discharge and remains ready for use even after long periods of storage.

- Star protection computer controls - includes overload protection, over-discharge protection and over heat protection.
- If the battery reaches a certain level of heat it will cut power to the tool, protecting the tool and battery from overheating.
- Forced air cooling fan - cools the battery to minimise charging time.
- Digital power display identifies the condition of the battery and charging condition.
- Warranty: 2 Years Warranty Covered By Makita Australia.



Makita 230VAC Rapid Charger
Part No. DC18RC



Klauke 10.8V Charger

Part No. LGML1AU

Charger for Klauke Battery RAML1

Features

- 230VAC Charger
- Charges Klauke 10.8V batteries

EK50MLAU
Mini Crimper



Older Style KLAUKE Batteries available on request

Makita & Klauke Batteries

Battery	Makita BL1815N-L	Makita BL1830B	Makita BL1840B	Klauke RAML
Image				
Voltage (V)	18	18	18	10.8
Amp (Ah)	1.5	3.0	4.0	1.5
Charge Time (min)	15	22	36	40
Weight (kg)	0.6	0.7	0.7	0.3



TEN Bushings Suit the following tools:

Milwaukee M18™ Battery Cable Stripper
(Part No. M18BCS-0C)
Ripley Power Driven Stripper
(Part No. WS68-3-8)



Ripley 4 X 4 Stripper
(Part No. 36001H)



Ripley 2 X 2 Stripper
(Part No. 36101H)



Cable Stripping



Quick & Easy change Bushings

Punch & Draw Stud Part No's

Part No.	Hole Size (mm)	Draw Stud (mm)	Part No.
PD-63.5	63.5	¾" (19)	DS3-4

SCAN or CLICK to see the stripper in action



Optional Ripley Bushing Quick Connect Adaptor (40110) attaches to the WS68, 4X4 & 2X2 Strippers for quick Bushing change

Shown attached to the 2X2 & 4X4 Strippers



TEN Part No.	Square Cut Bushings to suit LV ABC	
RB-100	10mm ² Al XLPE OH	
RB-101	16mm ² Al XLPE OH	
RB-200	25mm ² Al XLPE OH	
RB-201	35mm ² Al XLPE OH	
RB-300	50mm ² Al XLPE OH	
RB-301	70mm ² Al XLPE OH	
RB-400	95mm ² Al XLPE OH	
RB-401	120mm ² Al XLPE OH	
RB-500	150mm ² Al XLPE OH	
	Square Cut Bushings to suit Underground	
RB-102	16mm ² Cu XLPE/PVC LV UG (Olex)	
RB-202	35mm ² Cu XLPE/PVC LV UG (Olex)	
RB-302	50mm ² Cu XLPE/PVC LV UG (Olex)	
	Square Cut Bushings to suit Building Cable	
RB-103	16mm ² Cu PVC SDI V90 - Red (Olex)	
	16mm ² Cu PVC SDI V90 - Black (Olex)	
RB-303	70mm ² 19/2.14 Cu Green/Yellow Earth building wire	
RB-600	240mm ² Cu Double Insulated	
	Square Cut Bushings to suit PVC	
RB-304	50mm ² Cu PVC 0.6/1kV Black on White (Olex)	
	70mm ² Cu PVC 0.6/1kV Black on Clear (Olex)	
RB-305	70mm ² Cu PVC 0.6/1kV Black-White on Clear (Olex)	
	70mm ² Cu PVC 0.6/1kV Black-White on Clear (Olex)	
	Square Cut Bushings to suit Misc Cables	
RB-306	70mm ² Cu XLPE / PVC, Black on White (Olex)	
RB-402	120mm ² Cu XLPE / PVC, Black on Clear (Olex)	
RB-501	150mm ² Cu, Black-White on Clear (Olex)	
RB-502	185mm ² Cu, Black-White on Clear (Olex)	
	185mm ² Cu, Black (Prysmian)	
RB-501	150mm ² Al, Black (Olex)	
RB-601	240mm ² Al XLPE / PVC, Black on Colour (Olex)	
RB-700	157mm ² HD Al, Railway, 12 x 3.27 0.6/1KV V-90 L Electric Cable (Prysmian)	
CB6667	Bushing Spare Blade	

Images are a guide only and may not represent actual cable. Please contact TEN if your cable is not listed



Quality Tools, Equipment & Line Materials for the Energy Industry.

NOTES

Lined area for taking notes, consisting of horizontal dotted lines.



3100+ QUALITY PRODUCTS
 44 MANUFACTURERS - 10 CATEGORIES
 1 SOURCE

**REQUEST A COPY OF
 THE TEN CATALOGUE**



QUALITY TOOLS, EQUIPMENT AND LINE MATERIALS FOR THE ENERGY INDUSTRY

QLD/NT
 65 Wentworth Place
 BANYO QLD 4014
 P|F +61 7 3212 8999 | 8998
 W www.tengroup.com.au
 E salesqld@tengroup.com.au

TEN HIRE
 91 Basalt Street
 GEEBUNG QLD 4034
 P +61 7 3212 8999
 W www.tenhire.com.au
 E hire@tengroup.com.au

WA
 4/15 Baile Road
 CANNING VALE WA 6155
 P +61 8 9455 5574
 E saleswa@tengroup.com.au

NSW
 Suite F2, Level 1
 152-156 Pacific Highway
 TUGGERAH NSW 2259
 P +61 417 631 443
 E salesnsw@tengroup.com.au

VIC
 Unit 16, 191-195 Greens Road,
 DANDENONG STH VIC 3175
 P|F +61 3 9793 1622 | 1644
 E salesvic@tengroup.com.au

TAS/SA
 Unit 19, 15 Stanton Place
 CAMBRIDGE TAS 7170
 P +61 499 996 441
 E salestas@tengroup.com.au