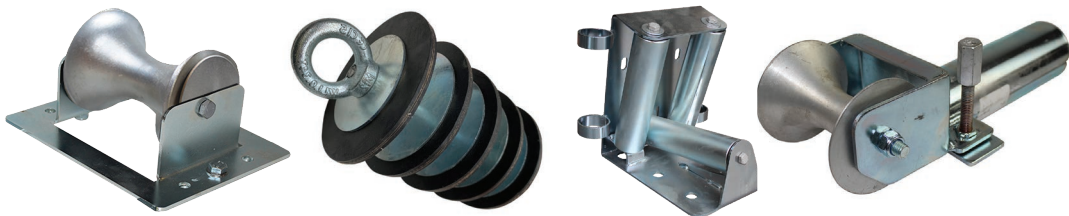




SPP UNDERGROUND RANGE





## Flat Trench Roller - SPP

### Part No. Various

- Flat trench roller with 140mm nylon or aluminium roller
- Can be pinned on side for corner bends
- Galvanised finished frame
- Replacement nylon and aluminium rollers available



Part No.	Roller Material	Max cable Dia. (mm)	Dimensions (mm)			Wt (kg)
			Length	Width	Height	
SPP-2A-140	Nylon	150	330	170	180	1.2
SPP-2A-140A	Aluminium	150	330	170	180	2.6

## Flat Trench / Cable Tray Roller - SPP

### Part No. Various

- Zinc plated frame
- Nylon and Aluminium rollers available
- Legs can be attached for cable tray /ladder work
- Replacement rollers available



Part No.	Roller Material	Max cable Dia (mm)	Dimensions (mm)			Wt (kg)
			Length	Width	Height	
SPP-3A-140	Nylon	150	210	260	150	2.2
SPP-3A-140A	Aluminium	150	210	260	150	3.2

## Rollers - Underground

### Raised Trench Rollers - SPP

#### Part No. SPP-2A-RTR

- Quality aluminium roller complete with bearings
- Galvanised steel frame
- Can be arranged over existing cables in trench



Part No.	Roller Material	Max cable Dia. (mm)	Dimensions (mm)			Wt (kg)
			Length	Width	Height	
SPP-2A-RTR	Aluminium	150	290	230	260	2.6

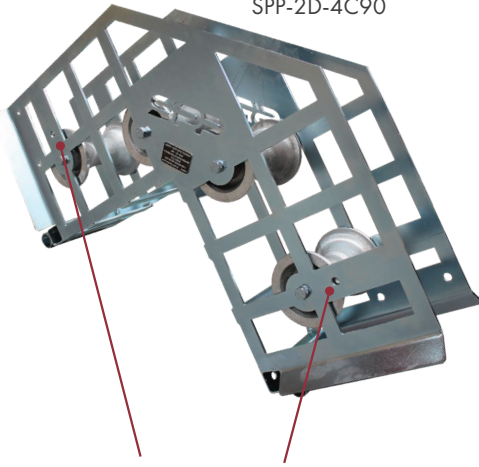


## Corner & Curve Rollers - SPP

### Part No. Various

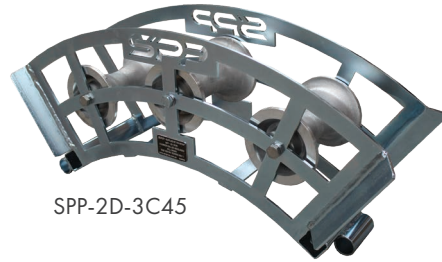
- Solid construction trench roller guides
- Provisions to peg units down and join units together
- Supplied with internal bearings
- Zinc plated finish
- Replacement rollers available

SPP-2D-4C90

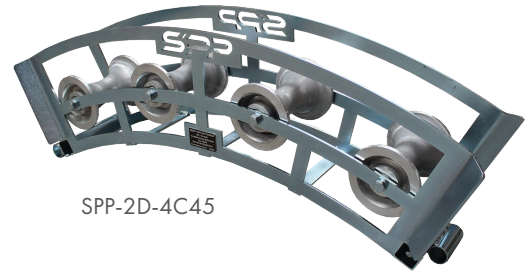


Versatile 90° four corner roller with dual radius capabilities by simply moving bolts to other positioned holes on frame

Part No.	Dimensions (mm)	Angle	Bend Radius (mm)	No. of Rollers	Rollers	Max. Cable OD (mm)
SPP-2D-4C90	700 (L) x 170 (W)	90°	350, 600 & 700	4	Aluminium	150
SPP-2D-3C45	550 (L) x 170 (W)	45°	500	3		150
SPP-2D-4C45	800 (L) x 170 (W)	45°	900	4		150



SPP-2D-3C45



SPP-2D-4C45

## Corner Rollers - SPP

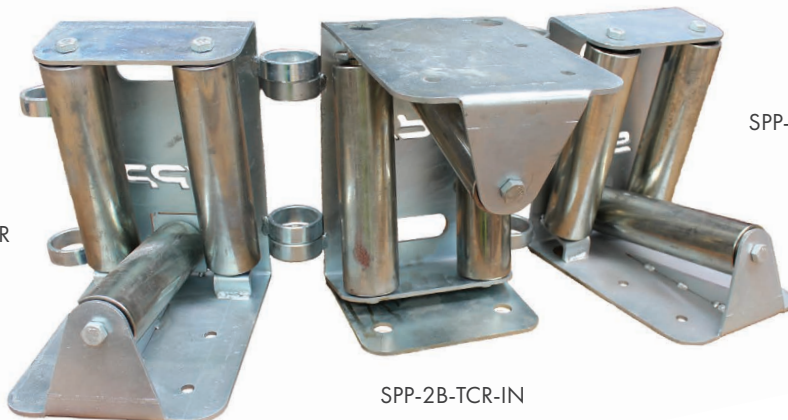
### Part No. Various

- Ground cable laying corner roller/ trench roller
- Corner guide trench roller
- 1 x Horizontal & 2 x Vertical 60mmOD rollers
- Easily pinned together with star pickets or pins
- 1000kg WLL
- Inverted model also available (SPP-2B-TCR-IN)



Part No.	Max. Payload (kg)	Dimensions (mm)	Wt (kg)
SPP-2B-TCR	1000	450 (L) x 300 (W) x 310 (H)	12.0
SPP-2B-TCR-IN			14.0

SPP-2B-TCR



SPP-2B-TCR

SPP-2B-TCR-IN



## Trench Feed In Rollers - SPP

### Part No. SPP-2B

- Feed-in roller guides for underground applications
- Sealed roller bearings
- All units have fixing points

Part No.	Roller & Frame	Roller Length (mm)	Dimensions (mm)	Wt (kg)
SPP-2B-1000	Zinc Plated Steel	1000	1105 (L) x 220 (W) x 125 (H)	15.71
SPP-2B-2X45	Zinc Plated Steel	2 x 600	1040 (L) x 220 (W) x 520 (H)	14.7

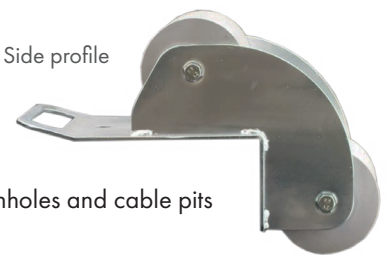


## Manhole Roller Guides - SPP

### Part No. SPP-MRG

- Right angle corner to assist with laying cables into manholes and cable pits
- Anchoring points in base plates if required
- 140mm aluminium rollers

Side profile



Part No.	Roller Configuration	Bend Radius (mm)	Wt (kg)
SPP-MRG-1	Single Fixed	-	6.5
SPP-MRG-2	Double Fixed	260	8.5
SPP-MRG-3	Triple Fixed	320	12.7
SPP-MRG-3P	Triple Pivoting	320	13.0

## Bell-Mouth, Cable Feeding - Lockable - SPP

### Part No. SPP-BM

- Made from Zinc Plated Steel
- Split design allows easy removal after cable installation
- Designed for cable entry applications
- Allows multi-direction entry into the conduit



Part No.	Neck OD (mm)	Suits Conduit Nominal Diameter (mm)	Split Feature	Dimensions (mm)	Wt (kg)
SPP-BM-050E	42	50 Electrical	Dual Wingnut	255 (L) x 120 (W) x 115 (H)	1.1
SPP-BM-050T	48	50 Telco		255 (L) x 130 (W) x 115 (H)	1.3
SPP-BM-063E	48	63 Electrical		255 (L) x 140 (W) x 115 (H)	1.3
SPP-BM-063T	60	63 Telco	Hinged	250 (L) x 117 (W) x 110 (H)	1.3
SPP-BM-080	74	80		250 (L) x 130 (W) x 140 (H)	1.6
SPP-BM-100	98	100		250 (L) x 177 (W) x 155 (H)	2.8
SPP-BM-125	118	125		250 (L) x 200 (W) x 165 (H)	3.4
SPP-BM-150	138	150		250 (L) x 220 (W) x 175 (H)	3.8
SPP-BM-200	190	200		300 (L) x 297 (W) x 260 (H)	9.4



## Sheave, Cable Feeding - Lockable - SPP

### Part No. SPP-LFS

- Made from Zinc Plated Steel with Aluminium Roller
- Split design allows easy removal after cable installation
- Designed to suit Cable Exit or Entry
- Lockable to conduit by expansion screw



Part No.	Neck OD (mm)	Suits Conduit ID (mm)	Split Feature	Dimensions (mm)	Wt (kg)
SPP-LFS-080	74	80	Hinged	375 (L) x 190 (W) x 160 (H)	4.15
SPP-LFS-100	98	100		365 (L) x 190 (W) x 190 (H)	5.30
SPP-LFS-125	118	125		390 (L) x 195 (W) x 200 (H)	6.05
SPP-LFS-150	138	150		380 (L) x 225 (W) x 220 (H)	6.60
SPP-LFS-200	190	200		460 (L) x 310 (W) x 300 (H)	14.85

## Rollers - Cable Tray

### Cable Tray Roller - SPP

#### Part No. SPP-3A

- Quality aluminium roller complete with bearings
- Easily adaptable for a variety of uses, low profile
- Ideal for cable or ladder tray work
- Suits cable up to 150mm diameter
- Remove legs to convert to "Flat Trench Rollers"

Part No.	Roller Material	Max cable Dia. (mm)	Dimensions (mm)	Wt (kg)
SPP-3A-140L	Nylon	150	600 (L) x 260 (W) x 150 (H)	3.8
SPP-3A-140AL	Aluminium	150	600 (L) x 260 (W) x 150 (H)	4.7

### 4-Way Cable Tray Roller - SPP

#### Part No. SPP-TR-605R

- 5 bar rollers with sealed bearings
- Mounting bracket suits cable ladder and cable tray (1mm to 50mm)
- Large wind in dials for easy opening and closing
- Zinc plated
- 200kg WLL

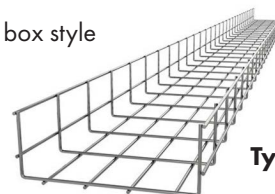


Part No.	Max cable Dia (mm)	Dimensions (mm)	Wt (kg)
SPP-TR-605R	80	125 (L) x 260 (W) x 360 (H)	4.45

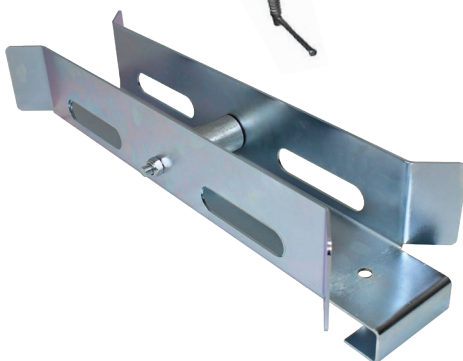
### Box Style Cable Tray Roller - SPP

#### Part No. SPP-3A-100

- Aluminium box style cable tray roller box style
- 42mm x 100mm roller



Typical Cable Trays





## Conduit Proving Mandrels - SPP

### DUCT Proving Mandrels

#### Part No. SPP-PM-Series

Used for testing circular integrity of Conduits before cable Hauling

#### Features

- Manufactured standard with Stainless-Steel Wire Rope an Thimbles or Stainless-Steel Eye Nuts & Threaded Rod attachments secure ropes for cable hauling
- Ideal for testing NBN & Telstra ducts or conduits
- Tests electrical and communications conduits
- Made from high quality HDPE material for long life and lubricity

Supplied with Stainless Steel Fittings



50mm Proving Mandrel  
SPP-PM-50E



80mm Proving Mandrel  
SPP-PM-080

Stainless Steel Wire Rope, Thimble & Ferrule



Stainless Steel Eye Nut & Threaded Rod



### STAINLESS STEEL eye fittings means extended service life

Part No.	Conduit Size (mm)	Conduit Type	Mandrel Length (mm)	Mandrel OD (mm)	Overall Length (mm)	Wt (kg)	Eye Fitting (mm)
SPP-PM-18		Telco	40	18	115	0.05	2 <sup>1</sup>
SPP-PM-24		Telco	40	24	115	0.05	2 <sup>1</sup>
SPP-PM-28		Telco	60	28	160	0.05	3.2 <sup>1</sup>
SPP-PM-32		Telco	60	32	180	0.05	3.2 <sup>1</sup>
SPP-PM-38		Telco	60	38	180	0.07	3.2 <sup>1</sup>
SPP-PM-50T	50	Telco	80	47	145	0.15	6*
SPP-PM-63T	63	Telco	100	60	180	0.30	8*
SPP-PM-50E	50	Electrical	80	40	200	0.10	3.2 <sup>1</sup>
SPP-PM-63E	63	Electrical	100	52	180	0.25	8*
SPP-PM-080	80	Electrical	180	74	260	0.75	8*
SPP-PM-100	100	Electrical	180	90	275	1.10	10*
SPP-PM-125	125	Electrical	245	113	340	2.20	10*
SPP-PM-150	150	Electrical	245	130	340	2.85	10*
SPP-PM-200	200	Electrical	280	184	375	5.80	10*

1 = Stainless Steel Wire & Thimble - \* = Stainless Steel Eye-Nut



## Wire Brushes and Squeegees

### Wire Brushes - SPP

**Part No. Various**

- Clean debris from the inside of conduits or ducts (50 to 200mm) before cable hauling/pulling
- Welded eyes for rope attachment
- Galvanised



Part No.	Description	Approx Equipment OD (mm)	Suit Conduit Size (mm)
SPP-WB-050	Wire Brush	55	50 Electrical
SPP-WB-063		70	63 Electrical
SPP-WB-080		90	80
SPP-WB-100		110	100
SPP-WB-125		130	125
SPP-WB-150		160	150
SPP-WB-200		230	200

**Contact TEN for Telecommunications Duct Cleaning Needs**

### Rubber Conduit Cleaner - SPP

**Part No. Various**

- Cleans finer dirt and debris from conduits or ducts (50 to 200mm). For larger or stubborn debris, use wire brush (SPP-WB) first
- Welded eyes for rope attachment.
- Galvanised finish with 5 rubber squeegees



Part No.	Description	Approx Equipment OD (mm)	Suit Conduit Size (mm)	Wt (kg)
SPP-RCC-050E	Rubber Conduit Cleaner	46	50 Electrical	0.35
SPP-RCC-063E		58	63 Electrical	0.40
SPP-RCC-080		85	80	0.95
SPP-RCC-100		105	100	1.50
SPP-RCC-125		130	125	2.35
SPP-RCC-150		155	150	2.90
SPP-RCC-200		205	200	5.05

### Rubber Lubricant Spreader - SPP

**Part No. Various**

- Used to spread Lubricant through conduits or ducts (50 to 200mm)
- Galvanised finish with rubber squeegees



**Contact TEN for information on the range of Polywater Lubricants**

Part No.	Description	Approx Equipment OD (mm)	Suit Conduit Size (mm)	Wt (kg)
SPP-RLS-050E	Rubber Lubricant Spreader	46	50 Electrical	0.15
SPP-RLS-063E		58	63 Electrical	0.20
SPP-RLS-080		85	80	0.45
SPP-RLS-100		105	100	0.60
SPP-RLS-125		130	125	0.75
SPP-RLS-150		155	150	0.95
SPP-RLS-200		205	200	1.30



## Cable stands and Reel Rollers

### Drum Jack Stands - Scissor - SPP

Part No. SPP-DJ-Series

#### Features

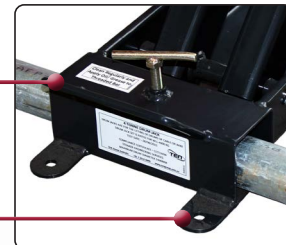
- Collapsible design for easy transport and storage
- Bolt-down points for secure and permanent fixing
- Can be set-up on uneven ground, as drum can be leveled with by adjusting one side
- Nylon wheels and handle for easy maneuverability
- Significant reduced pinch points
- Reinforced retaining cup and sealed bearing for threaded spindle
- Jacks labeled with ratings
- Easy wind up design with handle or hex head for fast winding with rattle gun
- Powder-coated finish
- Supplied with two spindles
  1. Jack joining spindle for rigidity during operation
  2. Drum spindle and placement collars to hold drum during operation



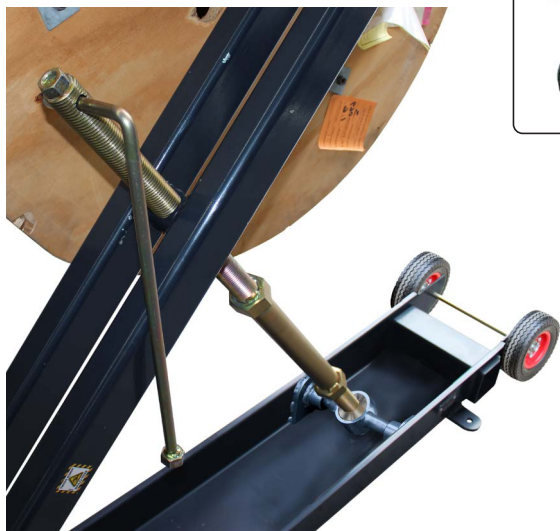
4T Jack shown  
Part No. SPP-DJ-4T



Wheels and handle for easy maneuverability



Bolt-down points for secure and permanent fixing



Easy wind design with handle and hex head for a faster winding action with rattle gun



Jack shown folded for transport

#### Ordering Information

Drum Jack	Spindle OD (mm)	Max Drum Diameter (mm)	Max Drum Width (mm)	WLL (kg)	Suitable for	Wt per Set (kg)
SPP-DJ-2T	60-76	1800	1180	2000	1 to 2T Drums	90
SPP-DJ-4T	60-76	2400	1180	4000	3 to 4T Drums	180





## Duct Rodders - SPP

### Traceable Duct Rodder - 4.5, 6, 9 & 11 mm



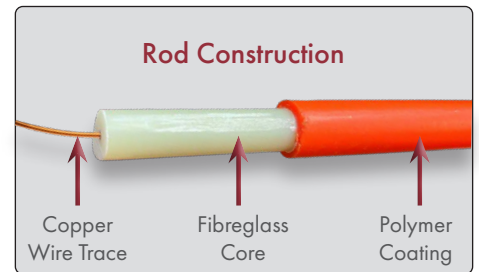
#### Part No. SPP-DR-Series

Utilised to prepare for cable installations in Electrical & Telecommunication conduits ranging from 20 to 200mm OD. The tough flexible rod is ideal for pushing or pulling draw ropes and small cables through conduits / ducts.



#### Features

- Quality Fibreglass rod coated with abrasion resistant UV stable polymer
- All sizes supplied standard with an internal copper wire for traceability.
- Supplied with Stainless Steel End Fitting & Removable Pulling Eyes for 6, 9 & 11 mm
- Brass End Fitting & Removable Pulling Eyes for 4.5mm
- 9 & 11 mm Reels are Powder-coated and fitted with a Drag Brake and Wheels
- 4.5 & 6mm Reels are Galvanized
- All Rodders include a Jointing/Repair Kit in pouch attached to the Reel (details below)
- Full range of Accessories available (detail below)



#### Jointing Kit Components (Included with Rodder)



#### Ordering Information

Rodder Part No.	Rod OD (mm)	Rod Length (m)	Replacement Rod Part No.	Jointing Kit Part No.	Jointing Kit Components
SPP-DR4.5-60	4.5	60	SPP-DR-ROD4.5-*	SPP-DR-JK4.5	1 x Joiner
SPP-DR6-60	6	60	SPP-DR-ROD6-*	SPP-DR-JK6	1 x Rod End
SPP-DR6-100	6	100	SPP-DR-ROD6-*	SPP-DR-JK6	1 x Pulling Eye
SPP-DR9-100	9	100	SPP-DR-ROD9-*	SPP-DR-JK9	2 x Allen Keys - 6, 9, 11 mm Rod
SPP-DR9-200	9	200	SPP-DR-ROD9-*	SPP-DR-JK9	1 x Glue
SPP-DR11-200	11	200	SPP-DR-ROD11-*	SPP-DR-JK11	1 x Rubber Rod Grip
SPP-DR11-300	11	300	SPP-DR-ROD11-*	SPP-DR-JK11	

\*Nominate Length of rod required - Supplied with Rod Ends



#### Accessory & Jointing Kit Pouch (Included with Rodder)

#### Accessories

	Rod Grip	Rod End	Pulling Eye	Swivel Rod End	Rod Joiner	Flexible Guide	Roller Guide
Part No.	SPP-DR-RG	SPP-DR-RE-*	SPP-DR-PE-*	SPP-DR-SRE-*	SPP-DR-RJ-*	SPP-DR-FG-*	SPP-DR-RG-*
Image							

\*Nominate Rod Size

Other Accessories Available, Contact TEN for further information



## TEN Group

The Energy Network (Australia) Pty Ltd  
ABN 72 093 052 441

### QUEENSLAND

65 Wentworth Place  
BANYO QLD 4014

P +61 7 3212 8999

W [www.tengroup.com.au](http://www.tengroup.com.au)

E [salesqld@tengroup.com.au](mailto:salesqld@tengroup.com.au)

### TEN HIRE & SRT

91 Basalt Street  
Geebung QLD 4034

P +61 7 3212 8999

W [www.tenhire.com.au](http://www.tenhire.com.au)

E [hire@tengroup.com.au](mailto:hire@tengroup.com.au)

### VICTORIA

Unit 16, 191-195 Greens Road,  
DANDENONG STH VIC 3175

P +61 3 9793 1622

E [salesvic@tengroup.com.au](mailto:salesvic@tengroup.com.au)

### TASMANIA | STH AUSTRALIA

Unit 19, 15 Stanton Place  
Cambridge Tas 7170

P +61 499 996 441

E [salestas@tengroup.com.au](mailto:salestas@tengroup.com.au)

### WESTERN AUSTRALIA

4/15 Baile Road  
CANNING VALE WA 6155

P +61 8 9455 5574

E [saleswa@tengroup.com.au](mailto:saleswa@tengroup.com.au)

### NEW SOUTH WALES

Suite F2, Level 1  
152-156 Pacific Highway  
TUGGERAH NSW 2259

P +61 417 631 443

E [salesnsw@tengroup.com.au](mailto:salesnsw@tengroup.com.au)



SCI QUAL  
INTERNATIONAL



SCI QUAL  
INTERNATIONAL



SCI QUAL  
INTERNATIONAL