



## A comprehensive range of conductor & cable cutting tools

- Battery, Hand, Ratched & Manual
- Guillotine, Parrot, Scissors & Ratchet Style
- Klauke, TEN, Reliable & Klein
- Designed for all types of material





## Contents

CUTTER COMPARISON MATRIX.....	3
8mm Bolt Cutter - Klauke .....	4
12mm Bolt Cutter - Klauke .....	4
20mm Cutter, ACSR/AL/CU - Klauke .....	5
20mm Remote Control Cutter, ACSR/AL/CU - Klauke.....	5
25mm Cutter, ACSR/Stay Wire/AL/CU - Klauke .....	6
25mm Cutter, ACSR/AL/CU - Klauke .....	6
32mm Cutter, AL/CU - Klauke.....	7
32mm Remote Control Cutter, AL/CU - Klauke .....	7
45mm Cutter, ACSR/Stay Wire/Armoured/AL/CU - Klauke	8
45mm Cutter, ACSR/Stay Wire/AL/CU - Klauke .....	8
50mm Cutter, AL/CU - Klauke .....	9
55mm Cutter, ACSR/AL/CU - Klauke.....	9
52mm Cutter - ACSR - TEN .....	10
50mm Cutter - AL/CU - TEN .....	10
65mm Cutter - AL/CU - TEN .....	10
85mm Battery Cutters - Klauke .....	11
105mm Battery Cutters - Klauke .....	11
Spiking/Cutting, Cable system - Remote Controlled 1000V Insulated Hydraulic Pump - Klauke .....	12
Spiking/Cutting, Cable System - Remote Controlled - Klauke	12
20mm Cutter, ACSR/AL/CU - Klauke.....	13
25mm Cutter, ACSR/AL/CU - Klauke.....	13
32mm Cutter, AL/CU - Klauke.....	14
50mm Cutter, AL/CU - Klauke .....	14
5 Tonne Crimper & Cutter - Klauke.....	15
5 Tonne Crimper & Cutter - Klauke.....	16
Universal Tool Adaptors.....	17
12 Tonne Universal Tool - Pistol Grip - Klauke .....	17
6 Tonne Universal Tool - Pistol Grip - Klauke.....	18
6 Tonne Universal Tool - In-Line - Klauke .....	18
Makita & Klauke Batteries .....	19
18V Charger - Makita.....	19
10.8V Charger - Klauke .....	19
Adaptor, Makita Platform to Milwaukee Battery - TEN.....	19
Tool Strap - TEN .....	19
Cutters, Hand Operated up to 85mm.....	20
Cutters, Remote Head up to 105mm .....	20
ACSR - Steel - Guy Cable Cutters .....	21
Copper - Aluminium Cable Cutters.....	21
Ratcheting Cable Cutter - Reliable.....	21
Cable Cutter - AL/CU - Klein.....	21

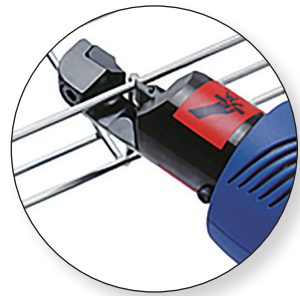


### CUTTER COMPARISON MATRIX

CUTTER PART No.	DESCRIPTION	JAW OPENING	CONTAINER SEAL	BARE AL & CU	ACSR	GUY WIRE	WIRE ROPE	REBAR GROUND ROD	CABLE TRAY SOFT STEEL BOLT	SWA
<b>BATTERY</b>										
EBS8CFM	Bolt Cutter	8	✓					✓		
EBS12CFM	Bolt Cutter	12	✓					✓		
ES20CFM/ ES20ISM/ ES20RMCCFM	Scissor Style Cutter	20		✓	✓					
ESG25CFM	Guilotine Style Cutter	25		✓	✓	✓		✓	✓	✓
ESM25CFM/ESM25ISM	Parrot Beak style Cutter	25		✓	✓					
ES32CFM/ ES32ISM/ ES32RMCCFM	Scissor Style Cutter	32		✓						
ESGM452CFM	Guilotine Style Cutter	45		✓	✓	✓		✓	✓	✓
ESG45CFM	Guilotine Style Cutter	45		✓	✓	✓		✓	✓	✓
ESM50CFM/ ESM50ISM	Parrot Beak style Cutter	50		✓						
ESG55CFM	Guilotine Style Cutter	55		✓	✓	✓		✓	✓	✓
RCB-52-ACSR	Ratchet Style Cutter	52		✓	✓					
RCB-50Y	Ratchet Style Open Jaw Cutter	50		✓						
RCB-65N	Ratchet Style Cutter	65		✓						
ESG65RMCCFM	Guilotine Style Cutter	65		✓	✓	✓		✓	✓	✓
ES85CFM	Parrot Beak style Cutter	85		✓						
ESG85CFM	Guilotine Style Cutter	85		✓						✓
ES105CFM	Parrot Beak style Cutter	105		✓						✓
ESG105CFM/ ESG105RMCCFM	Guilotine Style Cutter	105		✓						✓
EK425ISM	CJACSR	Parrot Beak style Cutter Attachment	17.5		✓					
EK425CFM	CJCU	Parrot Beak style Cutter Attachment	20		✓					
EK120UNVCFM	UCACSR	Guilotine Style Cutter Attachment	40		✓					
EK60UNVCFM	UC40	Guilotine Style Cutter Attachment	40		✓					
EKM60UNVCFM										
<b>HAND HYDRAULIC</b>										
HC-20A	Guilotine Style Cutter	20		✓	✓	✓	✓	✓	✓	
REL-58MC	Guilotine Style Cutter	25		✓	✓	✓	✓	✓	✓	
REL-2000MC	Guilotine Style Cutter	50		✓	✓	✓	✓	✓	✓	
HC-40A	Guilotine Style Cutter	40		✓	✓	✓	✓	✓	✓	
HSG45	Guilotine Style Cutter	45		✓	✓	✓	✓	✓	✓	
HSG85	Guilotine Style Cutter	85		✓						
<b>REMOTE HEAD - HYDRAULIC</b>										
SDK20P33MC	Scissor Style Cutter	20		✓	✓					
SDG45C	Guilotine Style Cutter	45		✓	✓					
SDG852C	Guilotine Style Cutter	85		✓						✓
SDK85C	Parrot Beak style Cutter	85		✓						✓
SDG105C	Guilotine Style Cutter	105		✓						✓
<b>RATCHET HAND</b>										
9009	Ratchet Style Cutter	18		✓	✓				✓	
63607	Ratchet Style Cutter	22		✓	✓				✓	
RC-32ACSR	Ratchet Style Cutter	32		✓	✓				✓	
K1062	Ratchet Style Cutter	52		✓						
K683T	Ratchet Style Cutter	32		✓						
REL-R-HC	Ratchet Style Parrot Beak Cutter	30		✓	✓					
REL-R-SC	Ratchet Style Parrot Beak Cutter	50		✓	✓					
<b>HAND</b>										
63065	Hand Parrot Beak Cutter	22		✓						



**Klauke**  
NEXT  
GENERATION

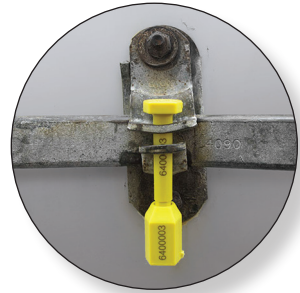


Efficient 8mm  
Cutting Capacity

FAST Ideal  
for cutting  
cable tray



SCAN or  
CLICK  
to View  
Operation  
Video



Ideal for cutting  
shipping  
container seals

12mm  
cutting  
capacity



## Cutters - Battery Powered

### 8mm Bolt Cutter - Klauke

Part No. EBS8CFM

- For cutting cable trays, bolts and medium-hard steel wire
- Ideal in confined areas: narrow cutting head
- All tool data can be viewed using on-tool display and i-press app

#### Features

- Makita battery system
- All data can be easily read via Bluetooth
- Open head, rotatable 330°
- One-button controlling all tool functions

#### Order Information

Part No.	Description
EBS8CFM-0	Tool skin and case
EBS8CFM-K	Tool, 2 x 1.5Ah batteries, charger and case

#### Technical Data

Cutting Force (kN)	15
Cutting Range (mm)	max 8 diameter
Cutting Time (s)	approx. 1 (depending on material thickness)
No. of Cuts	approx 300 for bolts 5mm diameter
Battery	Makita 18V 1.5Ah, Li-Ion*
Charging Time (min)	15
Length (mm)	342.5 including battery
Weight (kg)	1.55 including battery

\* See Page 19 for battery and charger information

### 12mm Bolt Cutter - Klauke

Part No. EBS12CFM

- For cutting, shipping container seals, cable trays, bolts and medium-hard steel wire
- Ideal in confined areas: narrow cutting head
- All tool data can be viewed using on-tool display and i-press app

#### Features

- Makita battery system
- All data can be easily read via Bluetooth
- Open head, rotatable 330°
- One-button controlling all tool functions
- Ergonomic balanced centre of gravity

#### Order Information

Part No.	Description
EBS12CFM-0	Tool skin and case
EBS12CFM-K	Tool, 2 x 1.5Ah batteries, charger and case

- Automatic retraction when operation is complete
- LED for work area illumination
- LED display for showing tool data
- Battery charge and service display

#### Technical Data

Cutting Force (kN)	45
Cutting Range (mm)	max 12 diameter
No. of Cuts	approx 300 for bolts 5mm diameter
Battery	Makita 18V 1.5Ah, Li-Ion*
Charging Time (min)	15
Length (mm)	375.5 including battery
Weight (kg)	2.05 including battery

\* See Page 19 for battery and charger information



**Klauke®**  
NEXT  
GENERATION

Compact  
Ideal for confined  
work areas  
i.e switchboard &  
domestic UG pits



Also Available in 1000V  
Insulated Version -  
For more information  
see page B34

## 20mm Cutter, ACSR/AL/CU - Klauke

Part No. ES20CFM

- For cutting Al/St conductors (ACSR), solid Cu cables and laminated copper bus bars
- Extremely robust design and lightweight
- Slim cutting head - ideal when space is critical
- All tool data can be viewed using on-tool display and i-press app

### Features

- Makita battery system
- All data can be easily read via Bluetooth
- One-button controlling all tool functions
- Ergonomic balanced centre of gravity
- Open head, rotatable 330°

### Technical Data

Cutting Force (kN)	23
Cutting Range (mm)	Max 20 dia. dependent on cable type
Battery	Makita 18V 1.5Ah, Li-Ion*
Charging Time (min)	15
Weight (kg)	2.15 including battery

\*See Page 19 for battery and charger information

Suitable for  
**ACSR,  
Al & Cu**

### Order Information

Part No.	Description
ES20CFM-0	Tool skin and case
ES20CFM-K	Tool, 2 x 1.5Ah batteries, charger and case

- LED Display
- Automatic retraction when operation is complete
- LED for work area illumination
- Visible and audible signals
- Battery charge and service display

## 20mm Remote Control Cutter, ACSR/AL/CU - Klauke

Part No. ES20RMCCFM

When cutting overhead lines, there is always the risk of coming into contact with the tool or an electric arc from a live adjacent conductor. With the new Klauke remote controlled cutting tool you remain on the ground at a safe distance.

### Features

- Sunrise Adaptor suits universal heads & telescopic sticks
- Can be switched between manual & remote
- Open head is rotatable 330°
- Ergonomic balanced centre of gravity, even when used with a telescopic hot-stick pole
- LED for work area illumination
- Quick motor stop for high user safety
- Automatic retraction when operation is complete
- Saves energy: motor stops after the operation
- Simple one-hand control via remote control
- Powerful Makita battery enables longer on-site operation between charges

### Order Information

Part No.	Description
ES20RMCCFM-0	Tool skin and case
ES20RMCCFM-K	Tool, 2 x 1.5Ah batteries, charger and case

### Technical Data

Head Type	Open
Battery	Makita 18V 1.5Ah, Li-Ion*
Bluetooth Range (m)	20
Weight (kg)	2.15 including battery

\*See page 19 for battery and charger information



Perfect for cutting  
away lightning  
arrester leads



Remote



SCAN or  
CLICK to see  
the Remote  
Cutter in  
action



**Klauke®**  
NEXT  
GENERATION



Suitable for  
Stay wire  
& ACSR



## 25mm Cutter, ACSR/Stay Wire/AL/CU - Klauke

Part No. ESG25CFM

- Suitable for cutting Stay Wire, Al/ St cables (ACSR), Cu, Al, St as well as armoured cables & solid structural steel
- Lightweight robust design
- Slim cutting head - ideal when space is critical
- All tool data can be viewed using on-tool display and i-press app

### Order Information

Part No.	Description
ESG25CFM-0	Tool skin and case
ESG25CFM-K	Tool, 2 x 1.5Ah batteries, charger and case



SCAN or CLICK for correct use video

### Features

- All data can be easily read via Bluetooth
- Closed flip top head style, rotatable 350°
- One-button controlling all tool functions
- Balanced Centre of Gravity
- Automatic retraction when operation is complete
- LED Display
- LED for work area illumination
- Manual retract stop (MRS) for efficient operations
- Visible and audible signals
- Battery charge and service display

### Technical Data

Cutting Force (kN)	60
Cutting Range (mm)	Max 25 dia. dependent on cable type
Battery	Makita 18V 1.5Ah, Li-Ion*
Charging Time (min)	15
Weight (kg)	2.35 including battery

\*See page 19 for battery and charger information

**Klauke®**  
NEXT  
GENERATION



SCAN or  
CLICK to see  
the Cutter in  
action



## 25mm Cutter, ACSR/AL/CU - Klauke

Part No. ESM25CFM

- For cutting open wires AL/CU/ACSR & stay wires
- Slim Parrot Beak cutting head ideal when space is critical
- All tool data can be viewed using on-tool display and i-press app

### Order Information

Part No.	Description
ESM25CFM-0	Tool skin and case
ESM25CFM-K	Tool, 2 x 1.5Ah batteries, charger and case

Suitable for  
ACSR,  
Al & Cu

### Features

- All data can be easily read via Bluetooth
- One-button controlling all tool functions
- Balanced Centre of Gravity
- Parrot Beak Head, rotatable 350°
- Automatic retraction when operation is complete
- LED for work area illumination
- Visible and audible signals
- LED Display

### Technical Data

Cutting Force (kN)	67
Cutting Range (mm)	ACSR Max 25 dia. Stay wires Max 12 dia.
Battery	Makita 18V 1.5Ah, Li-Ion*
Charging Time (min)	15
Weight (kg)	2.9 including battery

\*See page 19 for battery and charger information



**Klauke**  
NEXT  
GENERATION

Suitable  
for Al & Cu  
conductors



### 32mm Cutter, AL/CU - Klauke

Part No. ES32CFM

- Extremely robust design and lightweight
- Slim cutting head - ideal when space is critical
- All tool data can be viewed using on-tool display and i-press app
- Suitable for Al and CU conductors only

#### Features

- Makita battery system
- All data can be easily read via Bluetooth
- One-button controlling all tool functions
- Effortless working due to balanced centre of gravity
- Open head, rotatable 330°

#### Order Information

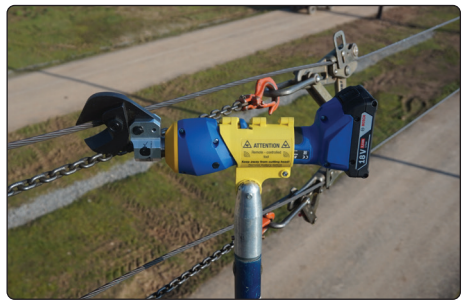
Part No.	Description
ES32CFM-O	Tool skin and case
ES32CFM-K	Tool, 2 x 1.5Ah batteries, charger and case

- Automatic retraction when operation is complete
- LED for work area illumination
- LED display for showing tool data including visible and audible signals
- Battery charge and service display

#### Technical Data

Cutting Force (kN)	15
Cutting Range (mm)	Max 32 dia. dependent on cable type
Battery	Makita 18V 1.5Ah, Li-Ion*
Charging Time (min)	15
Weight (kg)	2.15 including battery

\*See Page 19 for battery and charger information



### 32mm Remote Control Cutter, AL/CU - Klauke

Part No. ES32RMCCFM

When cutting overhead lines, there is always the risk of coming into contact with the tool or an electric arc from a live adjacent conductor. With the new Klauke remote controlled cutting tool you remain on the ground at a safe distance.

#### Order Information

Part No.	Description
ES32RMCCFM-O	Tool skin and case
ES32RMCCFM-K	Tool, 2 x 1.5A batteries, charger and case

#### Technical Data

Head Type	Open
Cutting Range (mm)	Max 32 dia.
Battery	Makita 18V 1.5Ah, Li-Ion*
Bluetooth Range (m)	20
Weight (kg)	2.30 including battery

\*See Page 19 for battery and charger information

#### Features

- LED Display
- Sunrise Adaptor suits universal & telescopic sticks
- Operation can be switched between manual / remote
- Open head is rotatable 330°
- Ergonomic balanced centre of gravity, even when used with a telescopic hot-stick pole
- LED for work area illumination
- Quick motor stop for high user safety
- Automatic retraction when operation is complete
- Saves energy: motor stops after the operation
- Simple one-hand control via remote control
- Powerful Makita battery enables longer on-site operation between charges

Scan or Click below to see the Remote Cutter in action



Perfect for cutting away lightning arrester leads



Suitable  
for Al & Cu  
conductors



Also Available in 1000V Insulated Version  
For more information see page B35



**Klauke®**  
NEXT  
GENERATION

Quick release  
Flip Top Cutting Head

The most powerful  
cutter in its class.  
Armoured/Al/  
ACSR/Cu  
up to 45mm



## 45mm Cutter, ACSR/Stay Wire/Armoured/AL/CU - Klauke

Part No. **ESGM452CFM**

- High cutting force cuts armoured CU and AL cables, ACSR & Stay Wires
- Cuts stranded copper cables
- Extremely robust design and lightweight
- Slim cutting head - ideal when space is critical
- All tool data can be viewed using on-tool display and i-press app

### Features

- All data can be easily read via Bluetooth
- Closed head with bolt interlock, flip top style, rotatable 330°
- One-button controlling all tool functions
- Effortless working due to balanced centre of gravity
- Automatic retraction when operation is complete
- Manual Retract Stop (MRS) for efficient operations
- 2 stage hydraulic system with fast feed and power stroke
- LED for work area illumination
- LED display for showing tool data including visible and audible signals
- Battery charge and service display

### Order Information

Part No.	Description
<b>ESGM452CFM-0</b>	Tool skin and case
<b>ESGM452CFM-K</b>	Tool, 2 x 1.5Ah batteries, charger and case

### Technical Data

Cutting Force (kN)	70
Cutting Range (mm)	Max 45 diameter
Battery	Makita 18V 4.0Ah, Li-Ion*
Charging Time (min)	36
Weight (kg)	4.6 including battery

\* See Page 19 for battery and charger information

## 45mm Cutter, ACSR/Stay Wire/AL/CU - Klauke

Part No. **ESG45CFM**

- High cutting force cuts armoured CU and AL cables, ACSR & Stay Wires
- Also suitable for round material made of Al, Cu and steel
- Extremely robust design and lightweight
- Slim cutting head - ideal when space is critical
- All tool data can be viewed using on-tool display and i-press app

### Features

- All data can be easily read via Bluetooth
- Closed head with bolt interlock, flip top style, rotatable 350°
- One-button controlling all tool functions
- Effortless working due to balanced centre of gravity
- Manual Retract Stop (MRS) for efficient operations
- 2 stage hydraulic system with fast feed and power stroke
- Automatic retraction when operation is complete
- LED for work area illumination
- LED display for showing tool data including visible and audible signals
- Battery charge and service display

### Order Information

Part No.	Description
<b>ESG45CFM-0</b>	Tool skin and case
<b>ESG45CFM-K</b>	Tool, 2 x 4.0Ah batteries, charger and case

### Technical Data

Cutting Force (kN)	70
Cutting Range (mm)	Max 45 diameter
Battery	Makita 18V 4.0Ah, Li-Ion*
Charging Time (min)	36
Weight (kg)	5.9 including battery



Suitable for  
ACSR



SCAN or  
CLICK  
to see the  
Cutter in  
action





**Klauke®**  
NEXT  
GENERATION

Suitable for  
Al & Cu

Streamline design  
makes the ESM50  
ideal for cutting  
larger cables in  
confined spaces



## 50mm Cutter, AL/CU - Klauke

Part No. ESM50CFM

- For cutting copper and aluminium cables
- Very high cutting capacity thanks to innovative cutting geometry
- All tool data can be viewed using on-tool display and i-press app

### Features

- Makita battery system
- All data can be easily read via Bluetooth
- Open head, rotatable 350°
- One-button controlling all tool functions
- Ergonomic balanced centre of gravity
- Automatic retraction when operation is complete
- Manual Retract Stop (MRS) for efficient operations

- LED for work area illumination
- LED display for showing tool data including visible and audible signals
- Battery charge and service display



### Order Information

Part No.	Description
ESM50CFM-0	Tool skin and case
ESM50CFM-K	Tool, 2 x 4.0Ah batteries, charger and case

### Technical Data

Cutting Force (kN)	38
Cutting Range (mm)	Max 50 diameter
Battery	Makita 18V 4.0Ah, Li-Ion*
Charging Time (min)	36
Weight (kg)	3.0 including battery

\*See Page 19 for battery and charger information

Suitable  
for Al & Cu  
& ACSR

## 55mm Cutter, ACSR/AL/CU - Klauke

Part No. ESG55CFM

- High cutting force cuts armoured CU and AL cables, ACSR & Stay Wires
- Also suitable for round material made of Al, Cu and steel
- All tool data can be viewed using on-tool display and i-press app

### Features

- Makita battery system
- All data can be easily read via Bluetooth
- Closed head with bolt interlock, flip top style, rotatable 350°
- One-button controlling all tool functions
- Effortless working due to balanced centre of gravity
- Automatic retraction when operation is complete
- Manual Retract Stop (MRS) for efficient operations

- 2 stage hydraulic system with fast feed and power stroke
- LED for work area illumination
- LED display for showing tool data including visible and audible signals
- Battery charge and service display

### Order Information

Part No.	Description
ESG55CFM-0	Tool skin and case
ESG55CFM-K	Tool, 2 x 4.0Ah batteries, charger and case

### Technical Data

Cutting Force (kN)	120
Cutting Range (mm)	Max 55 diameter
Battery	Makita 18V 4.0Ah, Li-Ion*
Charging Time (min)	36
Weight (kg)	8.2 including battery

\*See Page 19 for battery and charger information

One of the most versatile  
and strongest 55mm cutters  
on the market

120kN Cutting Force



## Cutters, Battery Operated - Ratchet Style

Battery Operated Ratchet Cutters, designed for cutting a variety of OH Conductors & UG cables, including CU, AL & ACSR. Supplied with or without batteries and charger. Versatile Makita platform

**Cuts ACSR**



### Features

- Ergonomically designed
- One handed operation
- Makita 18V 3.0Ah Li-ion Battery & 230VAC Rapid Charger

### 52mm Cutter - ACSR - TEN

#### SUITABLE FOR ACSR

#### Part No. RCB-52-ACSR

Plastic Moulded case included

- Cuts ACSR - Up to Max 300mm<sup>2</sup>
- Harden steel blade
- 52mm Jaw opening
- Popular Makita Battery Platform



#### Order Information

Part No.	Description
RCB-52-ACSR-0	Tool skin & case
RCB-52-ACSR-K	Tool, 2 x 3.0Ah* Makita batteries, charger and case



**Cuts AL/CU**

### 50mm Cutter - AL/CU - TEN

#### SCISSOR STYLE OPEN JAW

#### Part No. RCB-50Y

Plastic Moulded case included

- Scissor Style Head
- Ideal for Confined spaces
- Max 630mm<sup>2</sup>
- 50mm Jaw opening



#### Order Information

Part No.	Description
RCB-50Y-0	Tool skin & case
RCB-50Y-K	Tool, 2 x 3.0Ah* Makita batteries, charger and case

**Cuts AL/CU**



### 65mm Cutter - AL/CU - TEN

#### IDEAL FOR LARGER CABLES

#### Part No. RCB-65N

Plastic Moulded case included

- 65mm Jaw opening
- Max 1000mm<sup>2</sup>
- Ideal for larger UG cables
- Forward & Reverse mechanism



#### Order Information

Part No.	Description
RCB-65N-0	Tool skin & case
RCB-65N-K	Tool, 2 x 3.0Ah* Makita batteries, charger and case

#### Technical Data

Part No.	Head Style	Cuts	Jaw opening (mm)	Capacity (mm)			Dimensions (mm) (L x W x H)	Wt (kg) Inc. Battery
				CU	AL	ACSR		
RCB-52ACSR	Ratchet	ACSR	52	-	-	22.5	190 x 110 x 320	3.9
RCB-50Y	Scissor Ratchet	AL / CU	50	32	32	-	160 x 110 x 370	4.4
RCB-65N	Ratchet	AL / CU	65	41.5	41.5	-	175 x 110 x 320	3.5



## Cutters, Battery Operated - 85mm & 105mm

**Klauke**<sup>®</sup>  
NEXT  
GENERATION



ES85CFM



ESG85CFM



ES105CFM



ESG105CFM

**Cuts AL/CU/SWA**

### Features

- Powerful Makita battery system
- All data can be easily read via Bluetooth
- Open style head, rotatable 350°
- One-button controlling all tool functions
- Effortless working due to balanced centre of gravity
- Automatic retraction when operation is complete
- Manual Retract Stop (MRS) for efficient operations
- 2 stage hydraulic system with fast feed and power stroke
- LED for work area illumination
- LED display for showing tool data including visible and audible signals
- Battery charge and service display

### 85mm Battery Cutters - Klauke

#### Part No. ES85CFM

- Large cutting capacity up to 85mm diameter
- Scissor style cutting head

**Cuts  
AL/CU**

#### Order Information

Part No.	Description
ES85CFM-0	Tool skin and case
ES85CFM-K	Tool, 2 x 4.0Ah* batteries, charger and case

#### Part No. ESG85CFM

- Large cutting capacity up to 85mm diameter
- Suitable for CU, AL & SWA

**Cuts  
AL/CU/SWA**

#### Order Information

Part No.	Description
ESG85CFM-0	Tool skin and case
ESG85CFM-K	Tool, 2 x 4.0Ah* batteries, charger and case

### 105mm Battery Cutters - Klauke

#### Part No. ES105CFM

- Extremely large cutting area up to 105mm diameter
- Suitable for CU, AL & Lightweight SWA

**Cuts AL/CU/  
Lightweight  
SWA**

#### Order Information

Part No.	Description
ES105CFM-0	Tool skin and case
ES105CFM-K	Tool, 2 x 4.0Ah* batteries, charger and case

#### Part No. ESG105CFM

- Extremely large cutting area up to 105mm diameter
- Guillotine style cutting head
- Suitable for CU, AL & SWA



SCAN or  
CLICK  
to see the  
ESG105 Cutter  
in action

#### Order Information

Part No.	Description
ESG105CFM-0	Tool skin and case
ESG105CFM-K	Tool, 2 x 4.0Ah* batteries, charger and case

### Technical Data

Part No.	ES85CFM	ESG85CFM	ES105CFM	ESG105CFM
Cutting Force (kN)	30	60	74	120
Cutting Range (mm)	Max 85 OD AL & CU	Max 85 OD AL, CU & SWA	Max 105 OD AL, CU & Lightweight SWA	Max 105 OD AL, CU & SWA
Battery	Makita 18V 4.0Ah, Li-Ion*			
Charging Time (min)	36			
Weight (kg)	6.9 including battery	6.8 including battery	9.6 including battery	10.7 including battery

\*See Page 19 for battery and charger information



## Spiking/Cutting, Cable Systems

### Spiking/Cutting, Cable system - Remote Controlled 1000V Insulated Hydraulic Pump - Klauke

**Klauke®**

Part No. ASSGL-Series Pump



SCAN or CLICK to View Operation Video



**Technical data**

Battery Voltage (V)	18
Battery	2 x 4.0Ah, Li-ion*
Charging Time (min)	36
Weight (kg)	6.4 inc battery
Operating Pressure (PSI)	700bar (1000)
Usable Oil (ml)	800
Dimensions (mm)	330 (L) x 160 (W) x (H) 280

**Order Information**

Part No.	Description/Components
ASSGG105LC	Safety Pump (ASSGL), Remote Kit, 2 x Batteries, 10m Non-conductive Hose, 105mm Cutting Head ** (SDG105C), & Earth Spike with copper lead
ASSGG852LC	Safety Pump (ASSGL), Remote Kit, 2 x Batteries, 10m Non-conductive Hose, 85mm Cutting Head ** (SDG8525C), & Earth Spike with copper lead

\* See Page 19 for battery and charger information

\*\* See page B29 for specifications



Safely perform your cutting/spiking operations on unproven cables from

A SAFE DISTANCE

### Spiking/Cutting, Cable System - Remote Controlled - Klauke

Part No. ESG105RMCCFM - ESG65RMCCFM

- Large (105mm) & Medium (65mm) diameter remote controlled cable cutter
- Same performance as the standard (105) counterpart but adds a safe work environment
- Ideal for hard to access trenches and manholes by creating adequate distance between possible live conductors and the operator

**Features**

- Unique End Position Control - Emits a sound on the remote to indicate a successful cut. Safer than relying on the Maximum Hydraulic pressure indicator or gauge
- Remote control will only operate when the tool trigger is locked by the Spring Ring
- Double Click on the remote to start the

**Order Information**

Part No.	Description
ESG105RMCCFM-K ESG65RMCCFM-K	Tool, Remote Control, 2 x Batteries, Charger and case

- cut (safety feature against unintended operation)
- Single Click on the remote for retraction



ESG105RMCCFM

Unique Cutting Sensor

**Technical Data**

Part No.	ESG105RMCCFM	ESG65RMCCFM
Cutting Force (T)	120	60
Cable Type	AL/CU/SWA/ACSR	AL/CU/ACSR
Cutting Range (mm)	Max 105 dia. dependent on cable type	Max 65 dia. dependent on cable type
Battery	Makita 18V 4.0Ah, Li-Ion	Makita 18V 4.0Ah, Li-Ion
Charging Time (min)	36	36
Weight (kg)	10.5 including battery	6.0 including battery



**Klauke**<sup>®</sup>  
NEXT  
GENERATION

Endless Rotating Head

Cuts  
Cu, Al  
& ACSR



## 1000V Insulated Battery Powered Tools

### 20mm Cutter, ACSR/AL/CU - Klauke

Part No. ES20ISM

- Orange body for easy differentiation
- Insulated and VDE certified to 1000V for increased safety
- For cutting Al/St conductors (ACSR), Al/Cu cables and laminated copper bus bars
- All tool data in view thanks to the LCD display and Klauke i-press software

#### Features

- All data can be easily read via Bluetooth
- Visual and audible signals
- One-button controlling all tool functions
- Balanced centre of gravity
- Endless Rotatable head
- LED for illuminating work area
- Automatic retraction when operation is complete
- LED Display

#### Order Information

Part No.	Description
ES20ISM-O	Tool skin and case
ES20ISM-K	Tool, 2 x batteries, charger and case

**MEETS  
IEC 60900**

#### Technical Data

Cutting Force (kN)	23
Cutting Range (mm)	Up to 20 dia (dependent on cable/wire type)
Battery	Makita 18V 1.5Ah, Li-ion*
Charging Time (min)	15
Weight (kg)	2.1 including battery

\*See Page 19 for battery and charger information

**Klauke**<sup>®</sup>  
NEXT  
GENERATION

Endless Rotating Head

Cuts  
Cu, Al,  
ACSR &  
Stays



### 25mm Cutter, ACSR/AL/CU - Klauke

Part No. ESM25ISM

- Orange body for easy differentiation
- Insulated and VDE certified to 1000V for increased safety
- For cutting Al/St wires (ACSR), (Cu, Al, St) cables as well as armoured cables, and stay wires
- All tool data in view thanks to the LCD display and Klauke i-press software

#### Features

- All data can be easily read via Bluetooth
- Visual and audible signals
- One-button controlling all tool functions
- Balanced centre of gravity
- Endless Rotatable head
- LED for illuminating work area
- Automatic retraction when operation is complete
- LED Display

#### Order Information

Part No.	Description
ESM25ISM-O	Tool skin and case
ESM25ISM-K	Tool, 2 x batteries, charger and case

**MEETS  
IEC 60900**

#### Technical Data

Cutting Force (kN)	67
Cutting Range (mm)	Open wire (ACSR) to 25 dia., stay wires to 16 dia., high-tensile stay wires to 12 dia.
Battery	Makita 18V, 1.5Ah, Li-ion*
Charging Time (min)	15
Weight (kg)	2.9 including battery

\*See Page 19 for battery and charger information



**Klauke**<sup>®</sup>  
NEXT  
GENERATION

Endless Rotating Head

**Cuts  
Cu & Al**



### 32mm Cutter, AL/CU - Klauke

Part No. ES32ISM

- Orange body for easy differentiation
- Insulated and VDE certified to 1000V for increased safety
- Slim cutting head - ideal when space is critical
- All tool data in view thanks to the LCD display and Klauke i-press software

#### Features

- All data can be easily read via Bluetooth
- Visual and audible signals
- One-button controlling all tool functions
- Balanced centre of gravity
- Endless Rotatable head
- LED for illuminating work area
- Automatic retraction when operation is complete
- LED Display

#### Order Information

Part No.	Description
ES32ISM-0	Tool skin and case
ES20ISM-K	Tool, 2 x batteries, charger and case

**MEETS  
IEC 60900**

#### Technical Data

Cutting Force (kN)	15
Cutting Range (mm)	max. 32 dia
Battery	Makita 18V, 1.5Ah, Li-ion*
Charging Time (min)	15
Weight (kg)	2.1 including battery

\*See Page 19 for battery and charger information

**Klauke**<sup>®</sup>  
NEXT  
GENERATION

Endless Rotating Head

**Cuts  
Cu & Al**



### 50mm Cutter, AL/CU - Klauke

Part No. ESM50ISM

- Orange body for easy differentiation
- Insulated and VDE certified to 1000V for increased safety
- High cutting force for cutting copper and aluminium cables
- Saves time due to innovative opening mechanism design
- All tool data in view thanks to display and i-press

#### Features

- All data can be easily read via Bluetooth
- Visual and audible signals
- One-button controlling all tool functions
- Balanced centre of gravity
- Endless Rotatable head
- LED for illuminating work area
- Automatic retraction when operation is complete
- LED Display

#### Order Information

Part No.	Description
ESM50ISM-0	Tool skin and case
ESM50ISM-K	Tool, 2 x batteries, charger and case

**MEETS  
IEC 60900**

#### Technical Data

Cutting Force (kN)	38
Cutting Range (mm)	max. 50 dia
Battery	Makita 18V, 1.5Ah, Li-ion*
Charging Time (min)	15
Weight (kg)	3.1 including battery

\*See Page 19 for battery and charger information



**Klauke**  
NEXT  
GENERATION

## 5 Tonne Crimper & Cutter - Klauke

Part No. EK425ISM

- Orange body for easy differentiation
- Insulated and VDE certified to 1000 V for increased safety
- All tool data in view thanks to the LCD display and Klauke i-press software

### Features

- All data can be easily read via Bluetooth
- Visual and audible signals in case of error
- One-button controlling all tool functions
- Balanced centre of gravity
- Endless Rotatable head
- LED for illuminating work area
- Automatic retraction when operation is complete
- LED Display

### Order Information

Part No.	Description
EK425ISM-0	Tool skin and case
EK425ISM-K	Tool, 2 x batteries, charger and case

**MEETS  
IEC 60900**

Endless Rotating Head

Crimps up to  
240mm<sup>2</sup>  
Cuts up to  
20mm



### Technical Data

Crimping Force (kN)	53
Application	5 Tonne Crimping
Crimping Capacity (mm <sup>2</sup> )	Cu/Al 240, ACSR 185
Battery	Makita 18V, 1.5Ah, Li-ion*
Charging Time (min)	15
Stroke/Opening Width (mm)	40
No of crimps per charge	140 @ 70mm <sup>2</sup>
Dimensions (mm)	430(H) x 110(W) x 80(D)
Weight (kg)	2.6 including battery

\*See Page 19 for battery and charger information

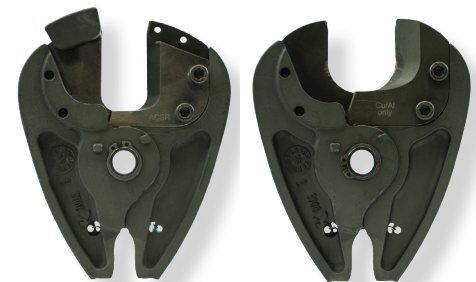
**53kN force in a lightweight tool of only 2.6kg**

6T Hex Dies Available  
See Hydraulic Section  
Page B11 of the  
TEN Catalogue



### Available cutting heads

Part No.	Capacity (mm)	Length (mm)	Weight (kg)	Cuts
CJACSR	17.5 OD	145	1	ACSR/Steel
CJCU	20 OD	140	1	CU/AL



CJACSR

CJCU



## 5 Tonne Crimper & Cutter - Klauke

Part No. EK425CFM

- Suitable for ABC, 6 to 240mm<sup>2</sup> Cu & 10 to 300mm<sup>2</sup> Al
- One handed ergonomic design with single push button operation
- Automatic retraction once crimp is completed
- Autostop function
- LED Light Illuminates working space
- Red LED display and acoustic signal
- High performance 18V Lithium-Ion battery
- Crimp head rotates 360°
- Multi-functional LED indicates maintenance and battery control
- Manual retraction does not rely on battery power

**Klauke**<sup>®</sup>  
**NEXT GENERATION**

### Order Information

Part No.	Description
EK425CFM-O	Tool skin and case
EK425CFM-K	Tool, 2 x 1.5Ah batteries, charger and case

**Ideal for ABC**

**Multi-function lightweight tool of only 2.6kg**

<b>Crimps (mm<sup>2</sup>)</b>	Cu/Al 240, ACSR 185
<b>Crimping Force (kN)</b>	50
<b>Stroke/Opening Width (m)</b>	40
<b>No of crimps per charge</b>	140 @ 70
<b>Battery</b>	Makita 18V, 1.5Ah, Li-ion*
<b>Charging Time (min)</b>	15
<b>Weight (kg)</b>	2.6 including battery

\*See Page 19 for battery and charger information



**6T Dies available see page B11, Hydraulic Section of the TEN Catalogue**



6T Aluminium Die



6T Copper Die



6T ABC Die



CJACSR



CJCU

**Available Interchangeable cutting heads**

Part No.	Capacity (mm)	Length (mm)	Weight (kg)	Cuts
CJACSR	17.5 OD	145	1	ACSR/Steel
CJCU	20 OD	140	1	CU/AL





**Klauke®**  
NEXT GENERATION

## 12 Tonne Universal Tool - Pistol Grip - Klauke

Part No. EK120UNVCFM

- One head for crimping, cutting and punching - one tool for all
- Ideal for field operations where all common jobs can be carried out with just one tool
- Very large crimping range

Quick release flip-top head



12 Tonne Die Adapter (included)

Rotatable Head

Ergonomic single push button operation

LED Illumination of workspace

LED display

Genuine Makita Li-Ion Battery

### Features

- Makita battery system
- All data can be easily read via Bluetooth
- Universal head with flip top style, rotatable
- One-button controlling all tool functions
- Automatic retraction after operation completed
- 2 stage hydraulic system with fast feed and power stroke
- Effortless working due to balanced centre of gravity
- LED for work area illumination
- LED display for showing tool data
- Battery charge and service display

### Order Information

Part No.	Description
EK120UNVCFM-0	Tool skin, 12 Tonne Die Adapter and case
EK120UNVCFM-K	Tool, 12 Tonne Die Adapter, 2 x 4.0A batteries, charger and case

### Technical Data

Crimping Force (kN)	108
Crimping Range (mm)	10-400
Number of Crimps	approx. 110 at 150mm Cu DiN
Cutting Range (mm)	max. 40 diameter
Punching Capacity (mm)	Up to 144 dia. round**
Battery	Makita 18V 4.0Ah, Li-Ion*
Charging Time (min)	36
Weight (kg)	7.35 including battery

\*See Page 19 for battery and charger information

**10-400mm<sup>2</sup> Crimping capacity  
40mm dia. Cutting Range  
144mm dia. round punching**

## Universal Tool Adaptors

Accessories/Tool	EK120UNVCFM	EK60UNVCFM	EKM60UNVCFM
12 Tonne Die Adaptor (included)	UA12T	Not Applicable	Not Applicable
6 Tonne Die Adaptor (included)	Not Applicable	UA22	UA22
Cutter 40mm ACSR	UCASR	UCASR	UCASR
Cutter 40mm Al/Cu	UC40	UC40	UC40
Punch Adaptor	UA12P (Up to 144mm)	UA12P (Up to 64mm)	UA12P (Up to 64mm)
Cutter - Rail Catenary	Upon Request	Upon Request	Upon Request
Cutter - Threaded Rod	Upon Request	Upon Request	Upon Request

\*\*Square Punch & Dies available upon request

**12T Die Adaptor**  
Part No. UA12T



**Cutting Die**  
Part No. UCASR



**Cutting Die**  
Part No. UC40



**Punch Adaptor**  
Part No. UA12P

**Punch Dies and Draw studs available - See Page B50**



**Klauke®**  
**NEXT GENERATION**



**6-300mm<sup>2</sup> Crimping capacity**  
**40mm mod. Cutting Range**  
**64mm dia. Round punching**

\*See Page B31 for Accessories

**6 Tonne Universal Tool - Pistol Grip - Klauke**

Part No. EK60UNVCFM

- One head for crimping, cutting and punching
- Ideal for field operations where all common jobs can be carried out with just one tool
- All tool data can be viewed using on-tool display and i-press app

**Features**

- Makita battery system
- All data can be easily read via Bluetooth
- Universal head with flip top style, rotatable 350°
- One-button controlling all tool functions
- Safety: Automatic retraction after operation completed
- 2 stage hydraulic system with fast feed and power stroke

**Order Information**

Part No.	Description
EK60UNVCFM-0	Tool skin and case
EK60UNVCFM-K	Tool, 2 x 4.0Ah batteries, charger, and case

- Balanced centre of gravity
- LED for work area illumination
- Battery charge and service display
- LED Display

**Technical Data**

Crimping Force (T)	6
Crimping Range (mm <sup>2</sup> )	6-300
Cutting Range (mm)	max. 40 diameter (See page 31 for adapter)
Punching Capacity (mm)	Up to 64 dia. round (See page 31 for adapter)
Battery	Makita 18V 4.0Ah, Li-Ion*
Charging Time (min)	36
Weight (kg)	4.8 including battery

**Klauke®**  
**NEXT GENERATION**



**6-300mm<sup>2</sup> Crimping capacity**  
**40mm mod. Cutting Range**  
**64mm dia. round punching**

**6 Tonne Universal Tool - In-Line - Klauke**

Part No. EKM60UNVCFM

- One head for crimping, cutting and punching 330°
- Ideal in the assembly field where all common jobs can be carried out using one tool
- All tool data in view thanks to display and i-press

**Features**

- All data can be easily read via Bluetooth
- Quality assurance via visual and audible signals
- One-button controlling all tool functions
- Universal head flip top style, rotatable
- Balanced centre of gravity

**Order Information**

Part No.	Description
EKM60UNVCFM-0	Tool skin and case
EKM60UNVCFM-K	Tool, 2 x 1.5Ah batteries, charger, and case

- LED for work area illumination
- 2-stage hydraulic system with fast feed and power stroke
- Automatic retraction when operation is complete
- LED Display

**Technical Data**

Crimping Force (T)	6
Crimping Range (mm <sup>2</sup> )	6-300
Cutting Range (mm)	max. 40 dia. (See page 31 for adapter)
Punching capacity (mm)	up to 64 dia. round (See page 31 for adapter)
Battery	Makita 18V 1.5Ah, Li-ion*
Charging Time (min)	15
Weight (kg)	3.0 including battery

\*See Page 19 for battery and charger information



Makita 230VAC Rapid Charger  
Part No. DC18RC



## Batteries, Chargers and Accessories

### 18V Charger - Makita

Part No. DC18RC

#### Features

- Integrated L.E.D.
- Battery charge level indicator allows user to monitor battery charge.
- Impact-resistant outer case and shock-absorbing inner-liner are engineered to protect the battery.
- Sixteen contact terminals maintain a constant connection with the tool to help prevent power loss or fluctuation, even during high-vibration applications.
- Battery resists self-discharge and remains ready for use even after long periods of storage.

- Star protection computer controls - includes overload protection, over-discharge protection and over heat protection.
- If the battery reaches a certain level of heat it will cut power to the tool, protecting the tool and battery from overheating.
- Forced air cooling fan - cools the battery to minimise charging time.
- Digital power display identifies the condition of the battery and charging condition.
- Warranty: 2 Years Warranty Covered By Makita Australia.

### 10.8V Charger - Klauke

Part No. LGML1AU

Charger for Klauke Battery RAML1

#### Features

- 230VAC Charger
- Charges Klauke 10.8V batteries

EK50MLAU  
Mini Crimper



## Makita & Klauke Batteries

Older Style KLAUKE Batteries available on request

Battery	Makita BL1815N-L	Makita BL1830B	Makita BL1840B	Makita BL1850B	Klauke RAML
Voltage (V)	18	18	18	18	10.8
Amp (Ah)	1.5	3.0	4.0	5.0	1.5
Charge Time (min)	15	22	36	45	40
Weight (kg)	0.6	0.7	0.7	0.7	0.3

## Adaptor, Makita Platform to Milwaukee Battery - TEN



Makita Battery Platform

Adaptor

Milwaukee Battery



## Tool Strap - TEN

Part No. TENM703

- Quality Tool Strap Ideal for Battery Tools
- 2m Web Strap complete with Snap Hook





### Cutters, Hand Operated up to 85mm

- Two stage double acting hydraulics
- Ram extends on both open & closed operation
- Manual pressure release at any stage
- Flip top latch head
- Replaceable blades



Part No.	HC-20A	REL-58MC	REL-2000MC	HC-40A	HSG45	HSG85
Head Rotation (°)	180	180	360	180	360	360
Cutting Force (T)	6.0	5.3	8.8	8.0	6.0	6.0
Safety Valve	Yes	Yes	Yes	Yes	Yes	Yes
Length (mm)	390	400	610	560	560	680
<b>Maximum Cutting Capacity OD (mm)</b>						
Cu / Al	20	25	50	40	45	85
ACSR	20	25	50	28	45	X
Wire Rope	16	25	25	22	25	X
Standard Guy Wire	16	22	19	15	22	X
ReBar, Ground & Anchor Rods	13	16	19	13	20	X
Soft Steel Bolts	16	16	32	13	20	X
Specific Features	Double Stage Hydraulic design	Auto-Retract, No Disassembly to Replace Moving Blade	Magnetic Reservoir traps contaminants, Release at any Stage	Double Stage Hydraulic design	Auto-Retract, Handle Locking Mechanism	Auto-Retract, Handle Locking Mechanism
Storage Device Supplied	Carry Bag	Carry Bag	Carry Bag	Carry Bag	Steel Case	Steel Case
Weight (kg)	2.8	1.8	8.2	6.0	4.9	6.8



### Cutters, Remote Head up to 105mm



Part No.	SDG105C	SDG852C	SDG45C	SDK20P33MC	SDK85C
Type	AL/CU/SWA	AL/CU/SWA	ACSR/AL/CU	ACSR/AL/CU	AL/CU/SWA
Cutting Range (mm)	max. 105 OD	max. 85 OD	max. 45 OD	max. 20 OD	max. 85 OD
Cutting Force (T)	12	6	6	1.5	3
Operating Pressure (PSI)	10,000	10,000	10,000	10,000	10,000
Length (mm)	432	445	340	202	450
Weight (kg)	7.7	4.3	3.8	2	5.2



**Breaking blades?  
Solution - RC-32ACSR  
AL/CU/ACSR/ST  
CUTTERS**

## Ratchet Cutters - ACSR - Steel - Copper - Aluminium

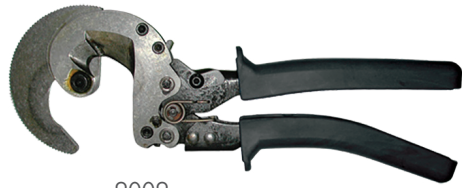
**Part No. Various**

- Suitable for Cutting ACSR - Steel - Copper - Aluminium (See table below)
- From 15mm to 52mm (See table below for cutting capacity of each tool)
- Patented two-step ratchet mechanism requires fewer strokes per cut
- Quick-release lever opens blades easily in every cutting position
- Handle locks in closed position for storage and transportation
- Full ratcheting cycle and release in all cutting positions
- Ergonomic handles design to maximise cutting leverage

**JennyTOOLS**

**KLEIN TOOLS**

### ACSR - Steel - Guy Cable Cutters



9009  
**Klauke**  
A Textron Company

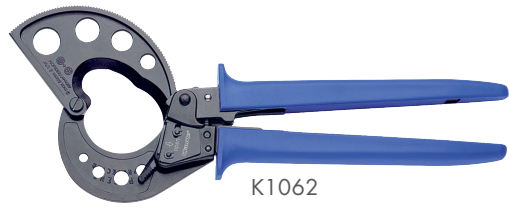


RC-32ACSR



63607

### Copper - Aluminium Cable Cutters



K1062



K683T

Part No.	Cable Dimensions Max Diameter (mm)			Length OAL (mm)	Tool Wt (kg)
	Cu	Al	ACSR / St / Guy		
9009	15	18	ACSR - 15 / Steel - 5	267	0.5
63607	18	22	ACSR - 17 / Steel - 10	260	0.7
RC-32ACSR	32	32	ACSR - 20 / Steel - 5	254	0.7
K1062	52	52	-	280	0.7
K683T	32	32	-	260	0.7

**RELIABLE EQUIPMENT**

### Ratcheting Cable Cutter - Reliable

**Part No. REL-R-HC**

- Jaw keeper prevents the jaws from spreading while under heavy load
- Shear-cut blades
- Ratchet and chain increase cutting pressure as handles open and close
- Moderate pressure opens & closes handles.
- Mechanical advantage over manual cutters

**Part No. REL-R-SC**

- Cut Copper & Aluminum cable up to 50mm, including rubber or lead covered cable
- Heavy duty jaw and ratchet design provides mechanical advantage over manual cutters
- Does not cut steel



Part No.	Cable Dimensions Max Diameter (mm)			Length OAL (mm)	Tool Wt (kg)
	Cu	Al	ACSR		
REL-R-HC	30	30	30	736	4.5
REL-R-SC	50	50	-	736	4.4

**KLEIN TOOLS**

### Cable Cutter - AL/CU - Klein

**Part No. 63035**

- Maximum cutting capacity 22mm Aluminium & Copper
- 425mm Length





## TEN Group

The Energy Network (Australia) Pty Ltd  
ABN 72 093 052 441

### QUEENSLAND

65 Wentworth Place  
BANYO QLD 4014

P +61 7 3212 8999

W [www.tengroup.com.au](http://www.tengroup.com.au)

E [salesqld@tengroup.com.au](mailto:salesqld@tengroup.com.au)

### TEN HIRE & SRT

91 Basalt Street  
Geebung QLD 4034

P +61 7 3212 8999

W [www.tenhire.com.au](http://www.tenhire.com.au)

E [hire@tengroup.com.au](mailto:hire@tengroup.com.au)

### VICTORIA

Unit 16, 191-195 Greens Road,  
DANDENONG STH VIC 3175

P +61 3 9793 1622

E [salesvic@tengroup.com.au](mailto:salesvic@tengroup.com.au)

### TASMANIA | SOUTH AUSTRALIA

Unit 19, 15 Stanton Place  
Cambridge Tas 7170

P +61 499 996 441

E [salestas@tengroup.com.au](mailto:salestas@tengroup.com.au)

### WESTERN AUSTRALIA

4/15 Baile Road  
CANNING VALE WA 6155

P +61 8 9455 5574

E [saleswa@tengroup.com.au](mailto:saleswa@tengroup.com.au)

### NEW SOUTH WALES

Suite F2, Level 1  
152-156 Pacific Highway  
TUGGERAH NSW 2259

P +61 417 631 443

E [salesnsw@tengroup.com.au](mailto:salesnsw@tengroup.com.au)



SCI QUAL  
INTERNATIONAL



SCI QUAL  
INTERNATIONAL



SCI QUAL  
INTERNATIONAL