

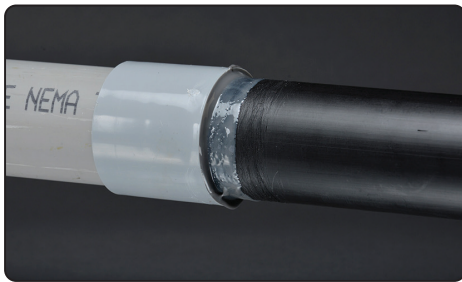


Quality Tools, Equipment & Line Materials for the Energy Industry.

Polywater
Solutions at work.

Conduit/Duct Adhesive - BondDuit - Polywater

Creates Strong, Watertight and Airtight Bonds with HDPE and Fibreglass Conduit



Polywater® BondDuit® joins polyethylene conduits (PE duct) to PVC, fiberglass, or metal conduits. It is a superior, easy-to-apply alternative to joining conduits with mechanical couplings. The rapid-cure, two-part resin adhesive forms a strong watertight and airtight seal and delivers a durable bond that can withstand movement and vibration. Ideal for installation along roadsides or near electrical equipment like transformers or switchgear.

Features & Benefits

- **VERSATILE**
Bonds HDPE to PVC, rigid steel, fiberglass conduits and fittings, and transition couplings
- **SUPERIOR**
Stronger pullout strength than most mechanical couplings
- **COST EFFECTIVE**
Less expensive than mechanical couplings
- **CONVENIENT**
Kits contain all application components required for a quick installation



To Watch the BondDuit Application Video
SCAN or CLICK the QR-Code



BT-KIT



BTXL-250CART12

Ordering Information

Part No.	Contents
BT-KIT	2 x 50 ml Adhesive Cartridges 8 x Mixing Nozzles 1 x Strip Sanding Cloth 8 x Type RP™ Cleaning Wipes (cat# RP-1)
BTXL-250CART12	12 x 250 ml Adhesive Cartridges 12 x Mixing Nozzles 1 x Strip Sanding Cloth 12pr x Gloves 1 x Instruction Sheet

Typical Applications



PE to Steel



PE to Fibreglass



PE to PE

Polywater BondDuit Adhesive Quantity Calculator

Determine the number of adhesive cartridges needed based on the number of connections and the conduit size.

CALCULATE QUANTITY