

- 
- Long Reach Foam Filled Chainsaws
  - Pole Pullers & Tampers
  - Hydraulic Impact Wrench
  - Battery Powered, Hand Operated & Remote Head Crimpers
  - Battery Powered, Hand Operated & Remote Head Cutters
  - Compression Dies & Metal Hole Punches & Dies
  - Wood Augers
  - Hydraulic Pumps & HP & LP Hoses
  - Deep & Long Tube Impact Sockets

## **HYDRAULIC EQUIPMENT**

## HYDRAULIC EQUIPMENT - TABLE OF CONTENTS

<b>Crimping Tools, Battery Powered</b> .....	<b>C4</b>	45 Tonne Crimp Head - Single Acting .....	C16
12 Tonne Crimper - Klauke .....	C4	45 Tonne Dies .....	C16
13.5 Tonne Crimper - Klauke .....	C5	60 Tonne - Crimp Head - Single Acting .....	C17
Dies - 15 Tonne .....	C5	60 Tonne Dies .....	C17
5 Tonne Crimper & Cutter - Klauke .....	C6	100 Tonne Crimp Head - Double Acting - TESMEC .....	C18
3.5 Tonne Crimper - Klauke .....	C6	100 Tonne Crimp Head - Double Acting .....	C18
4 Tonne Square Crimper - Klauke .....	C7	100 Tonne Crimp Head - Single Acting .....	C19
50 Series Mini Crimper, Electromechanical - Klauke .....	C7	100 Tonne Dies .....	C19
12 Tonne Crimper - LITE .....	C8	<b>Cutters Selection Matrix</b> .....	<b>C20</b>
5.5 Tonne Crimper - Indent - Klauke .....	C8	<b>Cutters - Battery Powered</b> .....	<b>C21</b>
<b>Dies, Various</b> .....	<b>C9</b>	6, 8 & 12mm Bolt Cutters - Klauke .....	C21
6 Tonne Dies		20mm Cutter, ACSR/AL/CU - Klauke .....	C22
Suits EK425CFM .....	C9	20mm Remote Control Cutter, ACSR/AL/CU - Klauke .....	C22
Series 4 Dies		25mm Cutter, ACSR/Stay Wire/AL/CU - Klauke .....	C23
Suits EK354CFM .....	C9	25mm Cutter, ACSR/AL/CU - Klauke .....	C23
Cembre Style Dies		32mm Cutter, AL/CU - Klauke .....	C24
Suits EK50CFM .....	C9	32mm Remote Control Cutter, AL/CU - Klauke .....	C24
12 Tonne Dies, Aluminium - K12 Series .....	C10	45mm Cutter, ACSR/Stay/Armoured/AL/CU - Klauke .....	C25
12 Tonne Cutting Die .....	C10	45mm Cutter, ACSR/Stay/AL/CU - Klauke .....	C25
12 Tonne Dies, Copper - K12 Series .....	C11	50mm Cutter, AL/CU - Klauke .....	C26
12 Tonne Nest and Indent Dies - K12 Series .....	C12	55mm Cutter, ACSR/AL/CU - Klauke .....	C26
12 Tonne Copper Earth Connector Dies - K12 Series .....	C13	55mm Ratchet Cutter, ACSR/AL/CU - Klauke .....	C27
<b>Crimpers, Hand Operated - Hydraulic</b> .....	<b>C14</b>	50 & 65mm Ratchet style Cutters - AL/CU .....	C27
6 & 12 Tonne Crimpers, Hand Operated - Hydraulic .....	C14	85mm Battery Cutters .....	C28
<b>Crimpers, Remote Head - Hydraulic</b> .....	<b>C14</b>	105mm Battery Cutters .....	C28
12 Tonne Crimpers, Remote Head - Hydraulic .....	C14	<b>Cutters, Hand Operated, Hydraulic</b> .....	<b>C29</b>
25 Tonne Crimp Head - Single Acting - Klauke .....	C15	20, 25 & 40mm Hand Operated Cutters .....	C29
25 Tonne Dies .....	C15	<b>Cutters, Remote Head, Hydraulic</b> .....	<b>C29</b>
25T to 12T Die Adapter .....	C15	40 to 105mm Cutters, Remote Head .....	C29

## HYDRAULIC EQUIPMENT - TABLE OF CONTENTS

Universal Tools, Battery Powered - Crimp/Cut/Punch.....	C30	Sockets Sets ½" Drive.....	C42
12 Tonne Universal Tool - Pistol Grip - Klauke.....	C31	Deep Impact Socket Set - 26 & 29 Piece Kits.....	C42
Universal Tool Adaptors.....	C31	Extra Deep Tube Socket Set - 7 Piece Kit.....	C42
6 Tonne Universal Tool - Pistol Grip - Klauke.....	C32	METRINCH Socket Set - 15 Piece Kit.....	C42
6 Tonne Universal Tool - In-Line - Klauke.....	C32	Augers, Impact - Woodpecker.....	C43
1000V Insulated Battery Powered Tools - Klauke.....	C34	Chuck, Quick Change 7/16" Female to ½" Female.....	C43
20mm Cutter, ACSR/AL/CU - Klauke.....	C34	Chain Saw, Long Reach - Foam Filled.....	C44
25mm Cutter, ACSR/AL/CU - Klauke.....	C34	Tamper, Pole Hydraulic - Reliable.....	C45
32mm Cutter, AL/CU - Klauke.....	C35	Pole Pullers, Hydraulic.....	C46
50mm Cutter, AL/CU - Klauke.....	C35	56 Tonne Hydraulic Pole Puller.....	C46
5 Tonne Crimper & Cutter - Klauke.....	C36	22 Tonne Hydraulic Pole Puller.....	C46
Batteries, Chargers and Accessories.....	C37	Compression Test Gauge - 12 Tonne.....	C47
Makita 18V Charger.....	C37	Couplers, HP Hydraulic.....	C47
Klauke 10.8V Charger.....	C37	Hoses, Hydraulic.....	C47
Makita & Klauke Batteries.....	C37	Low Pressure Hydraulic Hoses - Twin-Line - NRP Jones.....	C47
Adaptor, Makita Platform to Milwaukee Battery.....	C37	High Pressure Hydraulic Hoses.....	C47
Tool Strap.....	C37	Pressure Gauge, In-line Flow.....	C47
Pumps, HP Hydraulic 700bar (10,000psi).....	C38	Punch Drivers - Punch & Dies.....	C48
Electric - Single Acting.....	C38	Punch Driver, Battery Powered - Greenlee.....	C48
Petrol - Double Acting - TESMEC.....	C38	Speed Punch & Dies - Greenlee.....	C49
Electric - Double Acting - TESMEC.....	C38	Speed Punch Knock-Out Kit - Metric ISO 16 - 40.....	C49
Battery Pump - Single Acting - Klauke.....	C39	Punch Driver, Hand Hydraulic.....	C50
Spiking/Cutting, Cable Systems - Klauke.....	C40	Punch Driver, Battery Powered - iToolco.....	C50
1000V Insulated Pump & Cutting Head - Remote Control..	C40	Punch Head, Hydraulic.....	C51
Pistol Style Cutters 65 & 105mm - Remote Controlled.....	C40	Keyway Punch - Hand operated - Greenlee.....	C51
Wrench, Hydraulic Impact - Low Pressure.....	C41		
Adaptor - 7/16" Hex to ½" Square Drive.....	C41		
"J" Hook Driver - Slot Socket PLUS.....	C41		

**Klauke®**

## Crimping Tools, Battery Powered

### 12 Tonne Crimper - Klauke

Part No. EK12042FSCFM



**Australia OH&S  
Pinch point free ram**

- Crimp range from 6 to 400mm<sup>2</sup>
- Head rotates 360°
- 2 speed unit which advances the dies at high speed until crimping force is encountered - then low speed to allow positioning of tool
- Manual return possible in all positions
- Bright LED illuminates work area
- Shock resistant plastic housing
- Accepts standard Australian and International 12 tonne die sets
- Makita 18V DC Lithium-Ion battery with high capacity output and quick charging time
- Battery level indicator
- Operating pressure 10,000PSI

Red LED display with acoustic signal for tool status

#### Features

- C-Head with 42mm opening and wide crimping range up to 400mm<sup>2</sup>
- Crimps Lugs, Links, Full & Non-Tension sleeves to a variety of conductors, including Copper (CU), Aluminium (AL), ACSR, ABC and a variety of other cables
- All tool crimping data can be viewed on the tool LED display and can be read via Bluetooth connection

#### Order Information

Part No.	Description
EK12042FSCFM-O	Tool skin and case
EK12042FSCFM-K	Crimping Tool, 2 x 4.0Ah batteries, charger and case*

**Full Range of 12T Dies available  
see pages C10 & C11**



- Visual and audible signals
- One-button operation, controlling all tooling functions
- Balanced centre of gravity for easy handling and effortless operations
- High-performance Makita 18V 4.0Ah Li-Ion battery\* with high capacity for extended operating time
- Quick motor stop for high user safety
- Automatic retraction when operation is complete.
- Automatic Retraction Stop (ARS) for positioning control in case of multiple crimping

Crimps (mm <sup>2</sup> )	Cu 400, Al 300, ACSR 185
Crimping Force (kN)	120
Stroke/Opening Width (mm)	42
Crimping Range (mm <sup>2</sup> )	6 - 400
Charging Time (min)	36
Weight (kg)	7.1 including battery

\* See page C37 for battery and charger information

### 12 Tonne Dies

Part No. K12-AF

- Crimping dies to suit battery, remote head and hand hydraulic 12T "C" type crimpers.
- Commonly referred to as "C" or "U" type dies.
- Dies colour coded to material type for easy identification.
- Across Flats diameter marked on die face for size identification on crimped lug or sleeve.

## 13.5 Tonne Crimper - Klauke

Part No. EK135FTCFM

**Crimping Range**  
10 to 630mm<sup>2</sup>

- Crimp range from 10 to 630mm<sup>2</sup>
- Powerful crimping force of 13.5t
- All tool data can be viewed using on-tool display and i-press app

### Features

- Makita battery system
- All data can be easily read via Bluetooth
- Closed Bolt interlock head, rotatable 360°
- Visual and audible signals
- One-button operating controlling all tool functions
- Automatic retraction after operation completed
- 2 stage hydraulic system with fast feed and power stroke
- Automatic retract stop saving time for multiple crimps
- Balanced centre of gravity
- LED for work area illumination
- LED display for showing tool data
- Battery charge and service display



**Also suitable for 12T Dies with the below adaptor (included)**



Part No. UA15T Die Adaptor Included

### Order Information

Part No.	Description
EK135FTCFM-O	Tool skin, 12T Die Adaptor and case
EK135FTCFM-K	Crimping Tool, 12T Die Adaptor, 2 x 4.0Ah batteries, charger and case

<b>Crimps (mm<sup>2</sup>)</b>	Cu 630, AL 500
<b>Crimping Force (kN)</b>	135
<b>Stroke opening Width (mm)</b>	50.8
<b>Crimping Range (mm<sup>2</sup>)</b>	10-630
<b>Number of Crimps</b>	approx. 85 at 240
<b>Battery</b>	Makita 18V 4.0Ah, Li-Ion*
<b>Charging Time (min)</b>	36
<b>Weight (kg)</b>	8.15 including battery

\*See page C37 for battery and charger information

Note: 13.5T crimper will not crimp all AL lugs up to 500mm<sup>2</sup>. Check with your lug/link manufacturer for specifications

**Full Range of 12T Dies available - see pages C10 & C11**

## Dies - 15 Tonne

Part No. VARIOUS

- Various styles available, compatible with most brand tools, contact TEN for more information

### Copper

Part No.	Type	Across Flats (mm)	Size (mm <sup>2</sup> )	Crimp Width (mm)
For 300 & 400mm <sup>2</sup> CU Dies see equivalent 12T Dies on page C10 & C11				
K15-31.0-CU	Cu	31.0	500	7
K15-37.0-CU	Cu	37.0	630	7

### Aluminium

Part No.	Type	Across Flats (mm)	Size (mm <sup>2</sup> )	Crimp Width (mm)
K15-39.0-AL	Al	39.0	400/500	15



15T Crimping Dies

## Klauke®

Takes 6T Round Dies

Interchangeable heads - easily change from crimping to cutting

Head Rotates 360°

Ergonomic single push button operation

LED Illumination of workspace

Genuine Makita Li-Ion Battery

Red LED display and acoustic signal in case of error

6T Dies available see page C9



### 5 Tonne Crimper & Cutter - Klauke

Part No. EK425CFM

- Suitable for ABC, 6 to 240mm<sup>2</sup> Cu & 10 to 300mm<sup>2</sup> Al
- One handed ergonomic design with single push button operation
- Automatic retraction once crimp is completed
- Auto-stop function
- LED Light Illuminates working space
- Red LED display and acoustic signal
- High performance 18V Lithium-Ion battery
- Crimp head rotates 360°
- Multi-functional LED indicates maintenance and battery control
- Manual retraction does not rely on battery power

**Ideal for ABC**

#### Order Information

Part No.	Description
EK425CFM-O	Tool skin and case
EK425CFM-K	Tool, 2 x 1.5Ah batteries, charger and case

**Multi-function lightweight tool only 2.6kg**

Crimps (mm <sup>2</sup> )	Cu/Al 240, ACSR 185
Crimping Force (kN)	50
Stroke/Opening Width (m)	40
No of crimps per charge	140 @ 70
Battery	Makita 18V, 1.5Ah, Li-ion*
Charging Time (min)	15
Weight (kg)	2.6 including battery

\*See page C37 for battery and charger information

#### Available Interchangeable cutting heads

Part No.	Capacity (mm)	Length (mm)	Weight (kg)	Cuts
CJACSR	17.5 OD	145	1	ACSR/Steel
CJCU	20 OD	140	1	CU/AL



Also Available in 1000V Insulated Version - For more information see page C36

Uses 4 Series interchangeable dies

Flip top Head Rotates 360°

See page C9 for Series 4 Die information

Single push button operation

LED Illumination of workspace

Genuine Makita Li-Ion Battery



### 3.5 Tonne Crimper - Klauke

Part No. EK354CFM

- Crimps 6 to 150 mm<sup>2</sup>
- Slim design - ideal for confined spaces
- Tool data view on display and ipress app

#### Features

- All data can be easily read via Bluetooth
- Closed head, flip top style, rotatable 330°
- Visual and audible signals in case of error
- One-button controlling all tool functions

#### Order Information

Part No.	Description
EK354CFM-O	Tool skin and case
EK354CFM-K	Tool, 2 x 1.5Ah batteries, charger and case

- LED for work area illumination
- Always ready-to-use thanks to battery charge and service display
- Simple and safe: Automatic retraction when operation is complete

Crimping Force (kN)	35
Crimping Range (mm <sup>2</sup> )	6-150
Stroke/Opening Width (mm)	9
Number of Crimps	approx. 145 at 120 Cu
Battery	Makita 18V 1.5Ah*
Charging Time (min)	15
Weight (kg)	2.4 including battery

\*See page C37 for battery and charger information

## Klauke®

"NO DIES" Required

Head rotates 350°

Single push button operation

LED Illumination of workspace

Klauke Li-Ion battery



### 4 Tonne Square Crimper - Klauke

**Part No. EKWF120ML**

- Crimps 6 to 120mm<sup>2</sup>
- ARS means faster crimp cycles (Automatic Retraction Stop)
- All tool data in view thanks to display and ipress app

**Features**

- All data can be easily read via Bluetooth
- Open head, rotatable 330°
- Visual and audible signals
- One-button controlling all tool functions

**Order Information**

Part No.	Description
EKWF120ML-0	Tool skin and case
EKWF120ML-K	Tool, 2 x 2.5Ah batteries, charger and case

- LED for work area illumination
- Simple and safe: Automatic retraction when operation is complete
- Always ready-to-use thanks to battery charge and service display

<b>Crimping Range (mm<sup>2</sup>)</b>	6 - 120
<b>Stroke/Opening Width (mm)</b>	19
<b>Battery</b>	Klauke 10.8V - 2.5Ah*
<b>Charging Time (min)</b>	45
<b>Weight (kg)</b>	1.96 including battery

Lightweight!  
Less than  
**1 kg**



\*IS501 Die  
Included with tool



### 50 Series Mini Crimper, Electromechanical - Klauke

**Part No. EK50MLAU**

- Lightweight Compact design
  - ideal for high volume work
  - switchboard manufacturers
  - automotive wiring harnesses
- High speed crimping time <1.5 seconds
- Automatic retraction

**Order Information**

Part No.	Description
EK50MLAU	Tool, case, battery, charger and IS501 die

<b>Crimping Force (kN/T)</b>	15/1.5
<b>Crimping Range (mm<sup>2</sup>)</b>	0.1 - 50
<b>Crimping Time (s)</b>	<1.5
<b>Battery</b>	Klauke 1.5Ah/10.8V Li-ion (RAML)*
<b>Crimps per Charge</b>	300 @ 10 Cu
<b>Charging Time (min)</b>	40
<b>Weight (kg)</b>	0.96 incl. battery

\* See page C37 for battery and charger information

Contact TEN for a list of available Series 50 Crimping Dies

**Kit Included**

Part No.	Description
RAML	1.5Ah, 10.8V Battery
LGML1AU	230V Charger for Klauke Batteries
*IS501	Series 50 Die 0.5 to 6mm <sup>2</sup>



Battery (RAML)



Charger (LGML1AU)



Die \*IS501 for RYB terminals



Protective Carry Case

### Cutting Die Part No. S502



Scan or Click the QR Code to view video



**Order Information**

Part No.	Description	Jaw opening (mm)	Capacity (mm)
S502	Cutting Die	19	CU-6.5 / ACSR-5.0

## Klauke® Lite

### 12 Tonne Crimper - LITE

Part No. EK12642FSAP



**OH&S  
Compliant Pinch  
point free ram**

**Rotatable Head**  
350 Degrees

**One-click Operation**  
All operation via one button

**Ergonomic Design**  
More comfortable,  
less work load

**18V Lithium-ion Battery**  
Genuine Makita Battery

**Balanced Points**  
Tool strap & Spring points

**Pressure Monitor**  
Pressure monitor ensures  
output force every cycle

**Anti Slip Handle**  
Anti-slip rubber grip

LED Illumination  
of workspace



#### Features

- 42mm opening allows a crimp range from 6 to 400mm<sup>2</sup>
- Crimps Lugs, Links, Full & Non-Tension sleeves to a variety of conductors
- Bright LED illuminates work area
- Shock resistant plastic housing with rubber ANTI-SLIP Grip
- Accepts standard Australian & International 12 tonne dies
- Battery level indicator (on battery)
- Operating pressure 10,000PSI
- Visual signals when pressure is reached
- One-button operation, controlling all tooling functions
- Automatic retraction when operation is complete.
- Manual retract button
- Balanced centre of gravity for easy handling and effortless operations

#### Order Information

Part No.	Description
EK12642FSAP-0	Tool skin and case
EK12642FSAP-K	Crimping Tool, 2 x 4.0Ah batteries, charger and case

#### Specifications

Crimps (mm <sup>2</sup> )	Cu 400, Al 300, ACSR 185
Crimping Force (kN)	120
Stroke/Opening Width (mm)	42
Crimping Range (mm <sup>2</sup> )	6 - 400
Charging Time (min)	36
Weight (kg)	6.7 including battery

**12T Dies available -  
see pages C10 & C11**

### 5.5 Tonne Crimper - Indent - Klauke

Part No. EK60VPCFM

- Crimps 10 to 240mm<sup>2</sup>
- Crimps optimised at all times due to the patented centering system
- All tool data in view thanks to display and ipress app

#### Features

- All data can be easily read via Bluetooth
- Quad-point indent crimping feature, no dies required
- Visual and audible signals
- One-button controlling all tool functions

#### Order Information

Part No.	Description
EK60VPCFM-0	Tool skin and case
EK60VPCFM-K	Tool, 2 x 4.0Ah batteries, charger and case*

- Open head, rotatable
- LED light
- Ergonomic balanced centre of gravity
- Fast 2-stage hydraulic system
- Automatic retraction when operation is complete

Crimping Force (kN)	55
Crimping Range (mm <sup>2</sup> )	10-240
Charging Time (min)	36
Weight (kg)	4.8 including battery

\* See page C37 for battery and charger information



Centred Material

**QUAD POINT  
CRIMPING**

**No Separate Dies required**



## Dies, Various

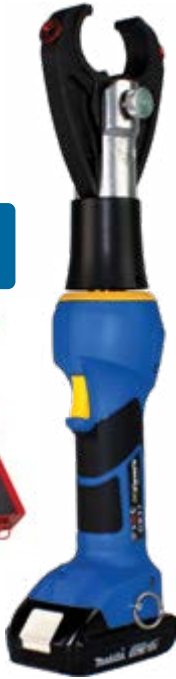
### 6 Tonne Dies Suits EK425CFM



6 Tonne Die Kits available



18 Compartment Metal Die Box  
Part No. K12-CASE-MB



### Series 4 Dies Suits EK354CFM



### Cembre Style Dies Suits EK50CFM

\*Tool no longer available



MB52-50 Cutting Die



Cembre Style Die



Part No.	Size (mm <sup>2</sup> )	Across Flats (mm)	Crimp Width (mm)
<b>Copper</b>			
K6-04.4-CU	6	4.4	5.0
K6-05.7-CU	10	5.7	5.0
K6-06.3-CU	16*	6.3	6.0
K6-07.7-CU	25*	7.7	12.0
K6-09.2-CU	35*	9.2	12.0
K6-10.4-CU	50*	10.4	9.0
K6-11.5-CU	70*	11.5	9.0
K6-14.2-CU	95*	14.2	6.0
K6-16.5-CU	120*	16.5	6.0
K6-18.3-CU	150*	18.3	5.0
K6-20.0-CU	185*	20.0	5.0
K6-23.1-CU	240*	23.1	5.0
K6CUSET-16-240	* 16 to 240 (10 Dies) including 20 compartment metal box		

#### Aluminium

K6-09.0-AL	10-35	9.0	5.0
K6-13.2-AL	50-70	13.2	12.0
K6-17.3-AL	95-120	17.3	12.0
K6-18.0-AL	150	18.0	12.0
K6-22.0-AL	150-185	22.0	9.0
K6-28.4-AL	240-300	28.4	5.0

#### ABC

K6-14.0-ABC	25	14.0	9.0
K6-17.3-ABC	35-70	17.3	9.0
K6-21.5-ABC	95-150	21.5	9.0

Part No.	Size (mm <sup>2</sup> )	Across Flats (mm)	Crimp Width (mm)
<b>Copper</b>			
K3.5-C6	6	4.4	5.0
K3.5-C10	10	5.7	5.0
K3.5-C16	16	6.3	5.0
K3.5-C25	25	7.7	5.0
K3.5-C35	35	9.2	5.0
K3.5-C50	50	10.4	5.0
K3.5-C70	70	11.5	5.0
K3.5-C14	Insulated Sleeve	14.0	5.0
K3.5-C95	95	14.2	5.0
K3.5-C120	120	16.5	5.0
K3.5-C150	150	18.3	5.0

Aluminium K3.5 Dies available - Contact TEN for further information

Part No.	Size (mm <sup>2</sup> )	Across Flats (mm)	Die Style
<b>Copper</b>			
M57-50	10	5.7	Cembre
M63-50	16	6.3	Cembre
M77-50	25	7.7	Cembre
M92-50	35	9.2	Cembre
M104-50	50	10.4	Cembre
M115-50	70	11.5	Cembre
M142-50	95	14.2	Cembre
M165-50	120	16.5	Cembre
M200-50	185	20.0	Cembre

#### ABC

M173-50	35-70	17.3	Cembre
M215-50	95-150	21.5	Cembre

#### Cutting Die

MB52-50	Cutting Die	10.0	Cembre
---------	-------------	------	--------

## 12 Tonne Dies, Aluminium - K12 Series

### Aluminium



Aluminium Die



ABC Die

Part No.	Size (mm <sup>2</sup> )	Across Flats (mm)	Crimp Width (mm)
K12-09.0-AL	6-35	9.0	22.0
K12-13.2-AL	50-70	13.2	22.0
K12-17.3-AL	95-120	17.3	22.0
K12-22.0-AL	150-185	22.0	18.0
K12-28.4-AL	240-300	28.4	18.0

### Overhead

K12-14.0-AL	7/2.25	14.0	22.0
K12-14.5-AL	7/2.50	14.5	22.0
K12-14.8-AL	19/2.00-19/2.11	14.8	22.0
K12-18.0-AL	7/3.00-7/3.75	18.0	22.0
K12-19.0-AL	7/4.50	19.0	22.0
K12-22.0-AL	19/3.25	22.0	18.0
K12-25.4-AL	19/3.75 Cabac	25.4	18.0
K12-26.2-AL	19/3.75 Utilux	26.2	18.0
K12-30.3-AL	19/4.75	30.3	18.0

### ABC

K12-14.0-ABC	10-35	14.0	9.0
K12-17.3-ABC	50-70	17.3	9.0
K12-21.5-ABC	95-120-150	21.5	9.0

### Special

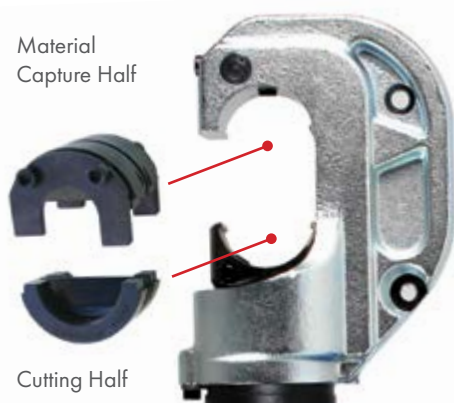
K12-16.6-AL	SPECIAL	16.6	22.0
K12-21.5-AL	SPECIAL	21.5	18.0
K12-23.1-AL	SPECIAL	23.1	18.0
K12-24.2-AL	SPECIAL	24.2	18.0
K12-24.9-AL	SPECIAL	24.9	18.0
K12-25.0-AL	SPECIAL	25.0	18.0
K12-30.0-AL	SPECIAL	30.0	18.0

### Steel

K12-06.8-ST	Inner Steel ACSR	6.8	10
K12-07.5-ST	Inner Steel ACSR	7.5	10
K12-09.5-ST	Inner Steel ACSR	9.5	10

Custom 12 Tonne Die Kits available. Contact TEN for further information

Material Capture Half



Cutting Half

## 12 Tonne Cutting Die

### Part No. 00949

Material	Size (mm) OD
Guy Wire/Soft Steel/ Steel Rod	16.0
ACSR/AL/CU	17.5

### Features

- Can be used on all 12 Tonne "C-Head" style Crimpers
- Heavy duty design

### Benefits

- Lower cost than standard dedicated cutting tools



Suitable for all brands of 12T battery, manual and remote head hydraulic compression tools

12Tonne Manual Crimper  
Part No. HK12042



12Tonne Battery Crimper  
Part No. EK12042FSCFM



12Tonne Crimp Head  
Part No. TP-420H



Please Note: This die selection chart is produced as a guide only. Please check with your Lug/Link manufacturer for AF sizes and tonnage.

## 12 Tonne Dies, Copper - K12 Series

### Copper



Copper Die

Part No.	Size (mm <sup>2</sup> )	Across Flats (mm)	Crimp Width (mm)
K12-04.4-CU	6	4.4	6.35
K12-05.7-CU	10	5.7	6.35
K12-06.3-CU	16*	6.3	17.5
K12-07.7-CU	25*	7.7	17.5
K12-09.2-CU	35*	9.2	17.5
K12-10.4-CU	50*	10.4	17.5
K12-11.5-CU	70*	11.5	17.5
K12-14.2-CU	95*	14.2	17.5
K12-16.5-CU	120*	16.5	14.0
K12-18.3-CU	150*	18.3	14.0
K12-20.0-CU	185*	20.0	14.0
K12-23.1-CU	240*	23.1	10.0
K12-26.0-CU	300*	26.0	10.0
K12-28.1-CU	400*	28.1	10.0

Copper Die Set \* Indicates Dies included in the set below

<b>K12CUSET-16-400</b>	16mm <sup>2</sup> to 400mm <sup>2</sup> (12 Dies) Including 18 Compartment Metal Box
<b>K12CUSET16-400NB</b>	16mm <sup>2</sup> to 400mm <sup>2</sup> (12 Dies) No Box

### Overhead

K12-08.3-CU	7/1.63 & 7/1.70	8.3	9.0
K12-09.2-CUOH	7/2.00 - 7/2.03	9.2	9.0
K12-11.5-CUOH	7/2.62	11.5	9.0
K12-13.0-CU	37/.064 - 19/2.11	13.0	17.5
K12-13.2-CU	19/1.70	13.2	17.5
K12-14.8-CU	19/2.00 - 19/2.11	14.8	9.0
K12-19.3-CU	19/2.75	19.3	14.0

### Special

K12-08.2-CU	SPECIAL	8.2	9.0
K12-19.0-CU	SPECIAL	19.0	22.0
K12-22.0-CU	SPECIAL	22.0	10.0
K12-CSFLAT9	FLAT Face half only	**Determined by lug size	9.9

\*\* Contact Lug manufacturer for hex half dimensions

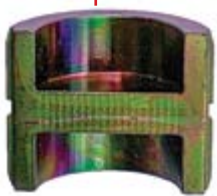
### Copper Screen

Part No.	Across Flats (mm)	Crimp Width (mm)
K12-07.5-CS	7.5	16.0
K12-12.7-CS	12.7	14.0
K12-14.0-CS	14.0	18.0

**12 Tonne Die Kits available  
Contact TEN  
for further information**



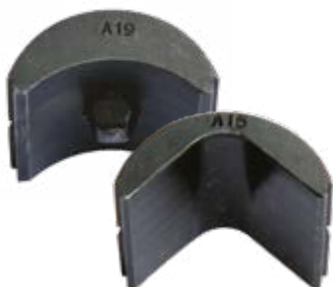
18 Compartment Metal Die Box  
Part No. K12-CASE-MB



**Flat Face Half  
K12-CSFLAT9**

Please Note: These die selection charts are produced as a guide only. Please check with your Lug/Link manufacturer for AF sizes and tonnage.

**See following pages for a full range of  
Nest & Indent Copper Earth Connector Dies**



## 12 Tonne Nest and Indent Dies - K12 Series

Used for crimping Under Ground sector cable Lugs and Links

Select the die half combination according to the chart below

### Nest Die Halves



K12-ANEST12



K12-ANEST14



K12-ANEST15

### Indent Die Halves



K12-AINDENT-16



K12-AINDENT-18



K12-AINDENT-19

### Example Sector Cable Lug & Links



K12-ANEST15 & K12-AINDENT-19  
Combination (Sold Separately)



4 Core AL Sector  
UG Cable



K12-ANEST12 & K12-AINDENT-16  
Combination (Sold Separately)

### Ordering information

Conductor Size (mm <sup>2</sup> )	3 Core AL Sector Cable		Conductor Size (mm <sup>2</sup> )	4 Core AL Sector Cable	
	Nest Part No.	Indent Part No.		Nest Part No.	Indent Part No.
120mm <sup>2</sup>	K12-ANEST12	K12-A-INDENT-16	120mm <sup>2</sup>	K12-ANEST14	K12-A-INDENT-16
150mm <sup>2</sup>	K12-ANEST12	K12-A-INDENT-18	150mm <sup>2</sup>	K12-ANEST14	K12-A-INDENT-18
185mm <sup>2</sup>	K12-ANEST12	K12-A-INDENT-18	185mm <sup>2</sup>	K12-ANEST15	K12-A-INDENT-18
240mm <sup>2</sup>	K12-ANEST12	K12-A-INDENT-19	240mm <sup>2</sup>	K12-ANEST15	K12-A-INDENT-19
300mm <sup>2</sup>	K12-ANEST12	K12-A-INDENT-19	300mm <sup>2</sup>	K12-ANEST15	K12-A-INDENT-19

**NOTE: Sector Rounding Dies available - Contact TEN for further information**

Please Note: This die selection chart is produced as a guide only. Please check with your connector manufacturer for confirmation of die type & size.

## 12 Tonne Copper Earth Connector Dies - K12 Series

Selecting the correct "C" type earth connector Compression Die is directly related to the style of "C" connector and the sizes of copper earth wire and/or earth rod being connected. Below are the most common types of "C" Connectors and the corresponding 12T Dies. These connectors are specifically designed for applications requiring corrosion resistant, high current jointing or tapping of buried copper earth grids, or to earth rods in zone substation and for pole and pad mounted transformers, therefore die selection is extremely important. The most common ranges of connectors are typically dimensionally identical in the Australian market.



K12-U1011



"C" Style \*



K12-U997



"E" Style\*



K12-UO



K12-UC



"6" Style\*

### Dies for "C" Style Earthing Connectors

12T Die Part No. Die	Cable (mm <sup>2</sup> )	Tap (mm <sup>2</sup> )	Connector
K12-U997	95	70	"C" Style
	95	95	
	70	70	
	70	95	

### Dies for "E" Style Earthing Connectors

12T Die Part No. Die	Cable (mm <sup>2</sup> )	Tap (mm <sup>2</sup> )	Connector		
K12-UO	35	35	"E" Style		
	35	50			
	50	50			
	70	50			
	70	70			
K12-U997	95	120	"E" Style		
	95	95			
	120	120			
	70	95			
	70	120			
K12-UC	10	35	"E" Style Wide Jaw		
K12-UO	35	70			
K12-U997	95	120			
K12-U1011	150	240			
12T Die Part No. Die	Min	Max	Min	Max	Connector
K12-UO	35	70	10	35	"E" Style Multi-Fit
K12-U997	95	120	10	70	
K12-U1011	150	240	10	70	
K12-U1011	150	240	95	120	

### Dies for "6" Style Earthing Connectors

12T Die Part No. Die	Earth Rod (mm)	Tap (mm <sup>2</sup> )	Connector
K12-U997	13-15	16	"6" Style
		25	
		35	
		50	
		70	
		95	
		120	

### Corresponding Dies Part No's for "C" Connector Manufacturers

TEN Part No.	Fulton Ind/Burndy Part No.	Cabac Part No.	TE/Dulmison
K12-U1011	U1011	HT130-C1011	
K12-U997	U997	HT130-C997	DU1315
K12-UC	UC	HT130-CC	
K12-UO	UO	HT130-CO	DUOT

Please Note: This die selection chart is produced as a guide only. Please check with your connector manufacturer for confirmation of die type.

\* Images are a guide only and may not represent actual connector.

**Klauke®**



HK6022



HK12042

## Crimpers, Hand Operated - Hydraulic 6 & 12 Tonne Crimpers, Hand Operated - Hydraulic

- Two stage double acting hydraulics
- Manual pressure release at any stage
- Ram extends during up & down operation
- Tools supplied with case

Part No.	HK6022	HK12042	REL-510
Head Rotation	360°	360°	180°
Crimping Force (T)	6	12	10.8
Pressure (PSI)	10,000	10,000	10,000
Safety Valve	Yes	Yes	Yes
Length (mm)	460	560	635
<b>Max Crimp (mm<sup>2</sup>)</b>			
Cu	300	400	380
Al	240	240	380
Specific Features	Auto-Retract, Locking Handle Mechanism	Auto-Retract, Locking Handle Mechanism	Magnetic Reservoir Traps Contaminants
Accepts Die Type	Standard 6 T "C"/"U" Type dies	Standard 12 T "C"/"U" Type dies	Standard 12 T "C"/"U" Type dies
Storage Device Supplied	Steel Box with Die Compartments	Steel Box with Die Compartments	Steel Box with Die Compartments
Weight (kg)	3.3	5.9	6.6

**RELIABLE EQUIPMENT**  
HYDRAULIC EQUIPMENT



REL-510

See page C38 for Hydraulic Pumps & page C47 for Hoses



## Crimpers, Remote Head - Hydraulic 12 Tonne Crimpers, Remote Head - Hydraulic

	12T Crimping Head	Multi Head	12T Crimping Head
Part No.	TP-420H	PK60UNVC	LPK1240-A
Force (T)	12	6	12
Head Type	"C"	Flip Top	"C"
Pressure (PSI)	10,000	10,000	2,250
Jaw Opening (mm)	42	42	42
Length (mm)	302	350	515
Accepts Die Type	Standard 12T "C"/"U"	Standard 6T "C"/"U"	Standard 12T "C"/"U"
<b>Die Capacity (mm<sup>2</sup>)</b>			
Cu	400	240	400
Al	300	300	300
Specific Features	Easy access die retaining Pin	See Page C31 for Multi Tool adaptors	Low Pressure
Weight (kg)	4.4	2.4	8.9



**LOW PRESSURE**

## 25 Tonne Crimp Head - Single Acting - Klauke

### Part No. HP25T-SA

- Crimps CU to 630mm<sup>2</sup> & AL to 500mm<sup>2</sup>
- Twist-lock die retaining pin hold die in place
- Strap on pin prevents loss of die retainer
- High Pressure Coupler included



Force (T)	25
Head Type	"U"/"H"
Pressure (PSI)	10,000
Length (mm)	335
Accepts Die Type	25T Dies
Weight (kg)	5.3
<b>Die Capacity (mm<sup>2</sup>)</b>	
Cu	630
Al	500

## 25 Tonne Dies

### Aluminium Dies

Part No.	Type	Across Flats (mm)	Conductor	Crimp Width (mm)
K25-30.0-AL	Al	30.0	19/3.75 AAAC	25
K25-39.0-AL	Al	39.0	400/500	25

### Copper Dies

Part No.	Type	Across Flats (mm)	Conductor	Crimp Width (mm)
K25-18.3-CU	Cu	18.3	150	16.0
K25-20.0-CU	Cu	20.0	185	16.0
K25-23.1-CU	Cu	23.1	240	16.0
K25-26.0-CU	Cu	26.0	300	16.0
K25-28.1-CU	Cu	28.1	400	16.0
K25-31.0-CU	Cu	31.0	500	16.0
K25-37.0-CU	Cu	37.0	630	12.2

### ACSR Dies

Part No.	Type	Across Flats (mm)	Crimp Width (mm)	Conductor
K25-28.5-AL	ACSR	28.5	27.0	30/7/2.50 GRAPE

### ACSR Dies Inner Steel Dies

Part No.	Type	Across Flats (mm)	Crimp Width (mm)	Conductor
K25-16.0-ST	ACSR	16.0	17.0	Inner for GRAPE

### Rounding Dies

Part No.	Type	Rounding Dia (mm)	Conductor (mm <sup>2</sup> )	Crimp Width (mm)
K25-22.5-CU	Cu	22.5	300	40
K25-26.0-CU-RD	Cu	26.0	400	40
K25-29.0-CU	Cu	29.0	500	40

25T Crimping Dies



12T Die Adaptor



## 25T to 12T Die Adapter

Part No.	Description
AU230-130D	Adaptor for 25T crimpers to suit 12T Dies

See pages C10 & C11 for 12T Dies

Please Note: This die selection chart is produced as a guide only.  
Please check with your Lug/Link manufacturer for AF sizes and tonnage.

## 45 Tonne Crimp Head - Single Acting

Part No. HP45T-SA-A



This lightweight head is utilised for crimping larger overhead joints, terminations and underground lugs or connectors.

(Supplied with leather die locating pin strap - not a carry handle)

### Features

- High pressure 10,000PSI, Single Acting
- Spring Return
- 20mm Stroke
- Quick coupler for easy disassembly
- Dimensions 360 x 175 x 210mm
- Crimping capacity
  - Cu: 800mm<sup>2</sup>
  - Al: 630mm<sup>2</sup>
  - Steel: AF Ø 20mm

Output Force (T)	45
Crimping Capacity (mm <sup>2</sup> )	800 Cu/630 Al
Working Pressure (PSI)	10,000
Weight (kg)	11.0

## 45 Tonne Dies

### Aluminium

Part No.	Across Flats (mm)	Conductor	Crimp Width (mm)
K45-28.3-AL	28.3	240/300	50.0
K45-39.0-AL	39.0	400/500	50.0
K45-43.2-AL	43.2	630	50.0

### ACSR/AAC/AAAC

Part No.	Across Flats (mm)	Conductor	Crimp Width (mm)
K45-22.0-AL	22.0	ACSR/AAC/AAAC	50.0
K45-28.5-AL	28.5	ACSR/AAC/AAAC	50.0
K45-30.0-AL	30.0	ACSR/AAC/AAAC	50.0
K45-34.5-AL	34.5	ACSR/AAC/AAAC	50.0
K45-40.0-AL	40.0	ACSR/AAC/AAAC	50.0
K45-44.5-AL	44.5	ACSR/AAC/AAAC	50.0
K45-47.5-AL	47.5	ACSR/AAC/AAAC	50.0
K45-48.0-AL	48.0	ACSR/AAC/AAAC	45.0

### Inner Steel - ACSR

Part No.	Across Flats (mm)	Conductor	Crimp Width (mm)
K45-9.5-ST	9.5	Inner Steel	19.0
K45-16.0-ST	16.0	Inner Steel	19.0
K45-17.0-ST	17.0	Inner Steel	19.0
K45-19.0-ST	19.0	Inner Steel	19.0
K45-18.0-ST	18.0	Inner Steel	19.0
K45-20.0-ST	20.0	Inner Steel	19.0

### Copper

Part No.	Across Flats (mm)	Conductor	Crimp Width (mm)
K45-23.1-CU	23.1	240	25.0
K45-26.0-CU	26.0	300	25.0
K45-28.1-CU	28.1	400	25.0
K45-31.0-CU	31.0	500	25.0
K45-37.0-CU	37.0	630	25.0
K45-43.2-CU	43.2	800	25.0



45T Copper Die



45T Aluminium Die

Please Note: This die selection chart is produced as a guide only. Please check with your Lug/Link manufacturer for AF sizes and required tonnage.



## 60 Tonne - Crimp Head - Single Acting

Part No. HP60TC-SA

Lightweight, single acting 60T press head/crimper for use with standard 60T C Dies

### Features

- Crimping capacity Cu/Al 1000mm<sup>2</sup>
- Crimping capacity Steel AF Ø 26mm High pressure 10,000PSI, Single Acting
- Spring Return
- Quick coupler for easy disassembly
- Top of the head rotates 90 degrees and can be lifted off to remove completed connection



Output Force (T)	60
Working Pressure (PSI)	10,000
Crimping Capacity	Cu/Al 1000 mm <sup>2</sup> & Steel 26mm Across Flats
Crimping Stroke (mm)	60.0
Length (mm)	450
Weight (kg)	30.5
Storage	Steel case

## 60 Tonne Dies

- Commonly referred to as "C" or "U" type dies
- Rectangular Dies also available

### Copper

Part No.	Type	Conductor	Across Flats (mm)	Width (mm)
K60-23.1-CU	Cu	240	23.1	25.0
K60-26.0-CU	Cu	300	26.0	25.0
K60-28.1-CU	Cu	400	28.1	25.0
K60-31.0-CU	Cu	500	31.0	25.0
K60-37.0-CU	Cu	630	37.0	25.0
K60-43.2-CU	Cu	800	43.2	25.0
K60-48.0-CU	Cu	1000	48.0	25.0

### Aluminium

Part No.	Type	Conductor	Across Flats (mm)	Width (mm)
K60-28.3-AL	Al	240-300	28.3	50.0
K60-39.0-AL	Al	400-500	39.0	50.0
K60-43.2-AL	Al	630	43.2	50.0
K60-52.5-AL	Al	800-1000	52.5	40.0

### AAC/AAAC/ACSR

Part No.	Type	Across Flats (mm)	Width (mm)
K60-28.5-AL	Al	28.5	50.0
K60-34.5-AL	Al	34.5	50.0
K60-40.0-AL	Al	40.0	50.0
K60-44.5-AL	Al	44.5	50.0
K60-47.5-AL	Al	47.5	45.0
K60-48.0-AL	Al	48.0	45.0

### ACSR Steel Inner

Part No.	Type	Across Flats (mm)	Width (mm)
K60-16.0-ST	Steel Inner	16.0*	19.0
K60-17.0-ST	Steel Inner	17.0	19.0
K60-18.0-ST	Steel Inner	18.0	19.0
K60-19.0-ST	Steel Inner	19.0	19.0

\*16mm AF 60T steel die suitable for AMOKABEL



60T Aluminium Die



60T Steel Die

Please Note: This die selection chart is produced as a guide only. Please check with your Lug/Link manufacturer for AF sizes and required tonnage.

## TESMEC

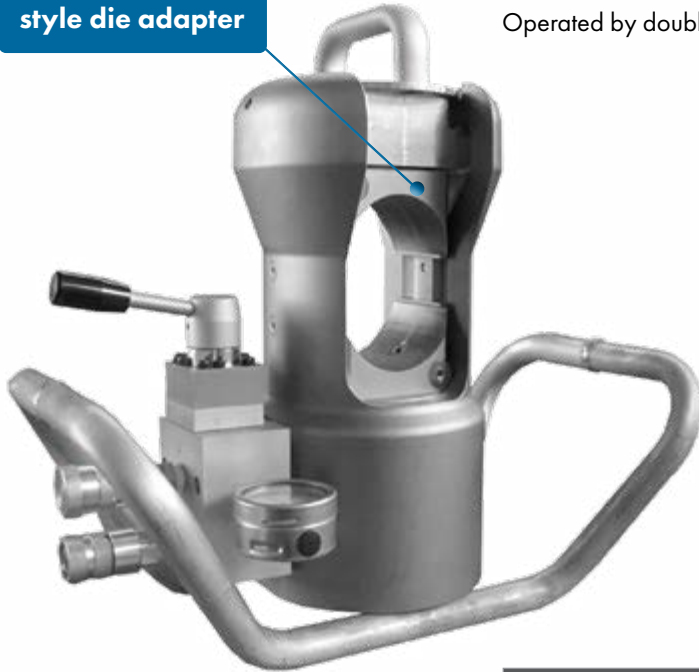
### 100 Tonne Crimp Head - Double Acting - TESMEC

Part No. PRT510

Lightweight, double acting high pressure 100T press head/crimper for use with 100T Dies. Includes Directional Valve and pressure gauge, which allows the operator to control the crimp at the crimp head.

Operated by double acting hydraulic pump.

Part No. PRT510  
Shown with "C"  
style die adapter



See page C19 for 100T Dies

#### Features

- Excellent power/weight ratio
- Very short pressing cycle
- Includes adaptor for Izumi Dies

### Lightweight

See page C19 for 100T Dies

Output Force (T)	100
Rated Pressure (PSI)	10,000
Crimping Capacity (mm <sup>2</sup> )	Max Cu/Al 1000 Max Steel AF 36(mm)
Dimensions (mm)	480H x 255W x 405L
Weight (kg)	34.5 Including Valve & Frame

See page C38 for TESMEC Double Acting Hydraulic Pumps

### 100 Tonne Crimp Head - Double Acting

Part No. HP100T-DA-A

Double acting high pressure 100T press head/crimper for use with 100T Dies



#### Features

- High pressure 10,000PSI, Double Acting Hydraulic
- Accepts 100T Izumi Style Dies
- Quick couplers for easy hydraulic assembly and disassembly
- Top of the head rotates 90 degrees and can be lifted off to remove completed connection

Output Force (T)	100
Rated Pressure (PSI)	10,000
Crimping Capacity (mm <sup>2</sup> )	Max Cu/Al 1000 Max Steel AF 36(mm)
Weight (kg)	31 Crimp body only
Packing	Steel case

## 100 Tonne Crimp Head - Single Acting

### Part No. HP100T-SA

- Single acting crimping head for connection with hydraulic drive units
- Crimps cable lugs and connectors of up to a maximum cross section of 1600mm<sup>2</sup>
- The nickel plated surface of the crimping head is resistant against environmental conditions
- Quick coupling
- Robust and compact design
- Lightweight with excellent stability even under load



<b>Crimping Capacity (mm<sup>2</sup>)</b>	Up to 1600
<b>Output Force (T)</b>	100
<b>Rated Pressure (PSI)</b>	10,000
<b>Stroke (mm)</b>	25
<b>Weight (kg) without dies</b>	27
<b>Weight with dies (kg)</b>	33

## 100 Tonne Dies

- Commonly referred to as "C" or "U" type dies
- Rectangular Dies also available

### Aluminium

Part No.	Type	Across Flats (mm)	Crimp Width (mm)
K100-21.0-AL	Al	21.0	75.0
K100-25.6-AL	Al	25.6	75.0
K100-28.3-AL	Al	28.3	75.0
K100-28.5-AL	Al	28.5	75.0
K100-30.0-AL	Al	30.0	75.0
K100-34.5-AL	Al	34.5	75.0
K100-36.22-AL	Al	36.22	75.0
K100-37.0-AL	Al	37.0	75.0
K100-39.0-AL	Al	39.0	75.0
K100-40.0-AL	Al	40.0	75.0
K100-40.21-AL	Al	40.21	75.0
K100-43.2-AL	Al	43.2	75.0
K100-44.5-AL	Al	44.5	75.0
K100-47.5-AL	Al	47.5	75.0
K100-48.0-AL	Al	48.0	75.0
K100-49.71-AL	Al	49.71	75.0

### Steel

Part No.	Type	Across Flats (mm)	Crimp Width (mm)
K100-07.5-ST	Steel Inner	7.5	35.0
K100-09.5-ST	Steel Inner	9.5	35.0
K100-11.0-ST	Steel Inner	11.5	35.0
K100-16.0-ST	Steel Inner	16.0*	35.0
K100-17.0-ST	Steel Inner	17.0	35.0
K100-18.0-ST	Steel Inner	18.0	35.0
K100-19.0-ST	Steel Inner	19.0	35.0
K100-20.0-ST	Steel Inner	20.0	35.0
K100-20.22-ST	Steel Inner	20.22	35.0
K100-26.0-ST	Steel Inner	26.0	35.0

\*16mm AF 100T steel die suitable for AMOKABEL

Please Note: This die selection chart is produced as a guide only. Please check with your Lug/Link manufacturer for AF sizes and tonnage.



100T Aluminium Die

Custom Sizes available upon request



## Cutters Selection Matrix

CUTTER PART No.	DESCRIPTION	Page No.	JAW OPENING	CONTAINER SEAL	BARE AL/CU	ACSR	GUY WIRE	WIRE ROPE	REBAR GROUND ROD	CABLE TRAY SOFT STEEL	SWA
<b>BATTERY</b>											
EBS6LGKS	Bolt Cutter	C21	6	✓					✓	✓	
EBS8CFM	Bolt Cutter	C21	8	✓					✓	✓	
EBS12CFM	Bolt Cutter	C21	12	✓					✓	✓	
ES20CFM/ ES20ISM/ ES20RMCCFM	Scissor Style Cutter	C22 / C34 /C22	20		✓	✓					
ESG25CFM	Guillotine Style Cutter	C23	25		✓	✓	✓		✓	✓	✓
ESM25CFM/ESM25ISM	Parrot Beak style Cutter	C23 / C34	25		✓	✓					
ES32CFM/ ES32ISM/ ES32RMCCFM	Scissor Style Cutter	C24 / C35 /C24	32		✓						
ESGM452CFM	Guillotine Style Cutter	C25	45		✓	✓	✓		✓	✓	✓
ESG45CFM	Guillotine Style Cutter	C25	45		✓	✓	✓		✓	✓	✓
ESM50CFM/ ESM50ISM	Parrot Beak style Cutter	C26 / C35	50		✓						
ESG55CFM	Guillotine Style Cutter	C26	55		✓	✓	✓		✓	✓	✓
ESST55AP-AL	Ratchet Style Cutter	C27 & H6	55		✓	✓					
ESU55AP-AL	Ratchet Style Cutter	C27 & H6	55		✓						
RCB-50Y	Ratchet Style Open Jaw Cutter	C27 & H6	50		✓						
RCB-65N	Ratchet Style Cutter	C27 & H6	65		✓						
ESG65RMCCFM	Guillotine Style Safety Cutter	C40	65		✓	✓	✓		✓	✓	✓
ES85CFM	Parrot Beak style Cutter	C28	85		✓						
ESG85CFM	Guillotine Style Cutter	C28	85		✓						✓
ES105CFM	Parrot Beak style Cutter	C28	105		✓						✓
ESG105CFM/ ESG105RMCCFM	Guillotine Style Cutter & Safety Cutter	C28 / C40	105		✓						✓
EK425ISM EK425CFM	CJACSR	Parrot Beak style Cutter Attachment	C36	17.5		✓					
	CJCU	Parrot Beak style Cutter Attachment	C6	20		✓					
EK120UNVCFM EK60UNVCFM EKM60UNVCFM	UCACSR	Guillotine Style Cutter Attachment	C31	40		✓					
	UC40	Guillotine Style Cutter Attachment	C32	40		✓					
<b>HAND HYDRAULIC</b>											
HC-20A	Guillotine Style Cutter	C29	20		✓	✓	✓	✓	✓	✓	
REL-58MC	Guillotine Style Cutter	C29	25		✓	✓	✓	✓	✓	✓	
HC-40A	Guillotine Style Cutter	C29	40		✓	✓	✓	✓	✓	✓	
<b>REMOTE HEAD - HYDRAULIC</b>											
SDG45C	Guillotine Style Cutter	C29	45		✓	✓					
SDG852C	Guillotine Style Cutter	C29	85		✓						✓
SDK85C	Parrot Beak style Cutter	C29	85		✓						✓
SDG105C	Guillotine Style Cutter	C29	105		✓						✓
<b>RATCHET HAND</b>											
9009	Ratchet Style Cutter	H5 (Hand Tools)	18		✓	✓				✓	
63607	Ratchet Style Cutter	H5 (Hand Tools)	22		✓	✓				✓	
RC-32ACSR	Ratchet Style Cutter	H5 (Hand Tools)	32		✓	✓				✓	
K1062	Ratchet Style Cutter	H5 (Hand Tools)	52		✓						
K683T	Ratchet Style Cutter	H5 (Hand Tools)	32		✓						
REL-R-HC	Ratchet Style Parrot Beak Cutter	H5 (Hand Tools)	30		✓	✓					
REL-R-SC	Ratchet Style Parrot Beak Cutter	H5 (Hand Tools)	50		✓	✓					
<b>HAND</b>											
Various	Cable, Bolt & Side Cutters	H7 (Hand Tools)	-		✓					✓	

## Cutters - Battery Powered

### 6, 8 & 12mm Bolt Cutters - Klauke

#### Features

- Makita battery system
- All data can be easily read via Bluetooth
- Open head, rotatable 330°
- One-button controlling all tool functions

#### Part No. EBS6LGKS

- Burr-free cutting
- The cut is made in less than 1 second
- Maintenance required only after 20,000 cuts (renew hydraulic shock absorber system)
- Always ready to cut thanks to easily replaceable blades

- Ergonomic balanced centre of gravity
- LED for work area illumination
- LED display for showing tool data
- Battery charge and service display

#### Order Information

Part No.	Description
EBS6LGKS-0	Tool skin and case
EBS6LGKS-K	Tool, 2 x 1.5Ah batteries, charger and case



Burr-free cutting of wire cable tray



FAST Ideal for cutting cable tray



#### Part No. EBS8CFM

- For cutting cable trays, bolts and medium-hard steel wire
- Ideal in confined areas: narrow cutting head
- All tool data can be viewed using on-tool display and i-press app

SCAN or CLICK to View Operation Video



#### Order Information

Part No.	Description
EBS8CFM-0	Tool skin and case
EBS8CFM-K	Tool, 2 x 1.5Ah batteries, charger and case



Ideal for cutting shipping container seals



#### Part No. EBS12CFM

- For cutting, shipping container seals, cable trays, bolts and medium-hard steel wire
- Ideal in confined areas: narrow cutting head
- All tool data can be viewed using on-tool display and i-press app

SCAN or CLICK to View Operation Video



#### Order Information

Part No.	Description
EBS12CFM-0	Tool skin and case
EBS12CFM-K	Tool, 2 x 1.5Ah batteries, charger and case

Part No.	Cutting Force (kN)	Cutting Range (mm)	Cutting Time (s)	No. of Cuts	Battery	Charging Time (min)	Weight (kg)
EBS6CFM	24	Max 6 dia.	approx. 1 (depending on material thickness)	approx 300 for bolts 5mm diameter	Makita 18V 1.5Ah, Li-Ion*	15	1.9 including battery
EBS8CFM	15	Max 8 dia.					1.55 including battery
EBS12CFM	45	Max 12 dia.					2.05 including battery

\* See page C37 for battery and charger information

**Klauke®**

## 20mm Cutter, ACSR/AL/CU - Klauke

**Part No. ES20CFM**

- For cutting Al/St conductors (ACSR), solid Cu cables and laminated copper bus bars
- Extremely robust design and lightweight
- Slim cutting head - ideal when space is critical
- All tool data can be viewed using on-tool display and i-press app

### Features

- Makita battery system
- All data can be easily read via Bluetooth
- One-button controlling all tool functions
- Ergonomic balanced centre of gravity
- Open head, rotatable 330°

### Technical Data

Cutting Force (kN)	23
Cutting Range (mm)	Max 20 dia. dependent on cable type
Battery	Makita 18V 1.5Ah, Li-Ion*
Charging Time (min)	15
Weight (kg)	2.15 including battery

\* See page C37 for battery and charger information

**Compact  
Ideal for confined  
work areas  
i.e switchboard &  
domestic UG pits**



**Also Available in 1000V  
Insulated Version -  
For more information  
see page C34**

**Suitable for  
ACSR,  
Al & Cu**

### Order Information

Part No.	Description
ES20CFM-0	Tool skin and case
ES20CFM-K	Tool, 2 x 1.5Ah batteries, charger and case

- LED Display
- Automatic retraction when operation is complete
- LED for work area illumination
- Visible and audible signals
- Battery charge and service display

## 20mm Remote Control Cutter, ACSR/AL/CU - Klauke

**Part No. ES20RMCCFM**

When cutting overhead lines, there is always the risk of coming into contact with the tool or an electric arc from a live adjacent conductor. With the new Klauke remote controlled cutting tool you remain on the ground at a safe distance.

### Features

- Sunrise Adaptor suits universal heads & telescopic sticks
- Can be switched between manual & remote
- Open head is rotatable 330°
- Ergonomic balanced centre of gravity, even when used with a telescopic hot-stick pole
- LED for work area illumination
- Quick motor stop for high user safety
- Automatic retraction when operation is complete
- Saves energy: motor stops after the operation
- Simple one-hand control via remote control
- Powerful Makita battery enables longer on-site operation between charges

### Order Information

Part No.	Description
ES20RMCCFM-0	Tool skin and case
ES20RMCCFM-K	Tool, 2 x 1.5Ah batteries, charger and case

### Technical Data

Head Type	Open
Battery	Makita 18V 1.5Ah, Li-Ion*
Bluetooth Range (m)	20
Weight (kg)	2.15 including battery

\* See page C37 for battery and charger information



**Perfect for cutting  
away lightning  
arrester leads**



Remote



SCAN or CLICK  
to see the  
Remote Cutter  
in action

**Klauke®**

## 25mm Cutter, ACSR/Stay Wire/AL/CU - Klauke

**Part No. ESG25CFM**

- Suitable for cutting Stay Wire, Al/St cables (ACSR), Cu, Al, St as well as armoured cables & solid structural steel
- Lightweight robust design
- Slim cutting head - ideal when space is critical
- All tool data can be viewed using on-tool display and i-press app

### Order Information

Part No.	Description
ESG25CFM-0	Tool skin and case
ESG25CFM-K	Tool, 2 x 1.5Ah batteries, charger and case



SCAN or CLICK for correct use video



Suitable for Stay wire & ACSR



### Features

- All data can be easily read via Bluetooth
- Closed flip top head style, rotatable 350°
- One-button controlling all tool functions
- Balanced Centre of Gravity
- Automatic retraction when operation is complete
- LED Display
- LED for work area illumination
- Manual retract stop (MRS) for efficient operations
- Visible and audible signals
- Battery charge and service display

### Technical Data

Cutting Force (kN)	60
Cutting Range (mm)	Max 25 dia. dependent on cable type
Battery	Makita 18V 1.5Ah, Li-Ion*
Charging Time (min)	15
Weight (kg)	2.35 including battery

\* See page C37 for battery and charger information

**Klauke®**

## 25mm Cutter, ACSR/AL/CU - Klauke

**Part No. ESM25CFM**

- For cutting open wires AL/CU/ACSR & stay wires
- Slim Parrot Beak cutting head
- Ideal when space is critical
- All tool data can be viewed using on-tool display and i-press app

### Order Information

Part No.	Description
ESM25CFM-0	Tool skin and case
ESM25CFM-K	Tool, 2 x 1.5Ah batteries, charger and case

Suitable for ACSR, Al & Cu



SCAN or CLICK to see the Cutter in action



### Features

- All data can be easily read via Bluetooth
- One-button controlling all tool functions
- Balanced Centre of Gravity
- Parrot Beak Head, rotatable 350°
- LED Display
- Automatic retraction when operation is complete
- LED for work area illumination
- Visible and audible signals

### Technical Data

Cutting Force (kN)	67
Cutting Range (mm)	ACSR Max 25 dia. Stay wires Max 12 dia.
Battery	Makita 18V 1.5Ah, Li-Ion*
Charging Time (min)	15
Weight (kg)	2.9 including battery

\* See page C37 for battery and charger information



Also Available in 1000V Insulated Version - For more information see page C34

**Klauke®**

## 32mm Cutter, AL/CU - Klauke

**Part No. ES32CFM**

- Extremely robust design and lightweight
- Slim cutting head - ideal when space is critical
- All tool data can be viewed using on-tool display and i-press app
- Suitable for Al and CU conductors only

### Features

- Makita battery system
- All data can be easily read via Bluetooth
- One-button controlling all tool functions
- Effortless working due to balanced centre of gravity
- Open head, rotatable 330°

### Order Information

Part No.	Description
ES32CFM-0	Tool skin and case
ES32CFM-K	Tool, 2 x 1.5Ah batteries, charger and case

- Automatic retraction when operation is complete
- LED for work area illumination
- LED display for showing tool data including visible and audible signals
- Battery charge and service display

Suitable for Al & Cu conductors



### Technical Data

Cutting Force (kN)	15
Cutting Range (mm)	Max 32 dia. dependent on cable type
Battery	Makita 18V 1.5Ah, Li-Ion*
Charging Time (min)	15
Weight (kg)	2.15 including battery

\* See page C37 for battery and charger information

## 32mm Remote Control Cutter, AL/CU - Klauke

**Part No. ES32RMCCFM**

When cutting overhead lines, there is always the risk of coming into contact with the tool or an electric arc from a live adjacent conductor. With the new Klauke remote controlled cutting tool you remain on the ground at a safe distance.

### Features

- LED Display
- Sunrise Adaptor suits universal & telescopic sticks
- Operation can be switched between manual / remote
- Open head is rotatable 330°
- Ergonomic balanced centre of gravity, even when used with a telescopic hot-stick pole
- LED for work area illumination
- Quick motor stop for high user safety
- Automatic retraction when operation is complete
- Saves energy: motor stops after the operation
- Simple one-hand control via remote control
- Powerful Makita battery enables longer on-site operation between charges

### Order Information

Part No.	Description
ES32RMCCFM-0	Tool skin and case
ES32RMCCFM-K	Tool, 2 x 1.5Ah batteries, charger and case

### Technical Data

Head Type	Open
Cutting Range (mm)	Max 32 dia.
Battery	Makita 18V 1.5Ah, Li-Ion*
Bluetooth Range (m)	20
Weight (kg)	2.30 including battery

\* See page C37 for battery and charger information



Scan or Click below to see the Remote Cutter in action



Perfect for cutting away lightning arrester leads



Suitable for Al & Cu conductors



Also Available in 1000V Insulated Version  
For more information see page C35



**Klauke®**

## 45mm Cutter, ACSR/Stay/Armoured/AL/CU - Klauke

**Part No. ESGM452CFM**

- High cutting force cuts armoured CU and AL cables, ACSR & Stay Wires
- Cuts stranded copper cables
- Extremely robust design and lightweight
- Slim cutting head - ideal when space is critical
- All tool data can be viewed using on-tool display and i-press app

### Features

- All data can be easily read via Bluetooth
- Closed head with bolt interlock, flip top style, rotatable 330°
- One-button controlling all tool functions
- Effortless working due to balanced centre of gravity
- Automatic retraction when operation is complete
- Manual Retract Stop (MRS) for efficient operations
- Battery charge and service display
- 2 stage hydraulic system with fast feed and power stroke
- LED for work area illumination
- LED display for showing tool data including visible and audible signals

### Order Information

Part No.	Description
ESGM452CFM-0	Tool skin and case
ESGM452CFM-K	Tool, 2 x 1.5Ah batteries, charger and case

### Technical Data

Cutting Force (kN)	70
Cutting Range (mm)	Max 45 diameter
Battery	Makita 18V 4.0Ah, Li-Ion*
Charging Time (min)	36
Weight (kg)	4.6 including battery

\* See page C37 for battery and charger information

## 45mm Cutter, ACSR/Stay/AL/CU - Klauke

**Part No. ESG45CFM**

- High cutting force cuts armoured CU and AL cables, ACSR & Stay Wires
- Also suitable for round material made of Al, Cu and steel
- Extremely robust design and lightweight
- Slim cutting head - ideal when space is critical
- All tool data can be viewed using on-tool display and i-press app

### Features

- All data can be easily read via Bluetooth
- Closed head with bolt interlock, flip top style, rotatable 350°
- One-button controlling all tool functions
- Effortless working due to balanced centre of gravity
- Manual Retract Stop (MRS) for efficient operations
- 2 stage hydraulic system with fast feed and power stroke
- Automatic retraction when operation is complete
- LED for work area illumination
- LED display for showing tool data including visible and audible signals
- Battery charge and service display

### Order Information

Part No.	Description
ESG45CFM-0	Tool skin and case
ESG45CFM-K	Tool, 2 x 4.0Ah batteries, charger and case

### Technical Data

Cutting Force (kN)	70
Cutting Range (mm)	Max 45 diameter
Battery	Makita 18V 4.0Ah, Li-Ion*
Charging Time (min)	36
Weight (kg)	5.9 including battery



Quick release  
Flip Top Cutting Head

**The most powerful  
cutter in its class.  
Armoured/Al/  
ACSR/Cu  
up to 45mm**



SCAN or CLICK  
to see the Cutter  
in action



**Suitable for  
ACSR**



SCAN or CLICK  
to see the Cutter  
in action

**Klauke®**

Suitable for  
Al & Cu

Streamline design  
makes the ESM50  
ideal for cutting  
larger cables in  
confined spaces



## 50mm Cutter, AL/CU - Klauke

Part No. **ESM50CFM**

- For cutting copper and aluminium cables
- Very high cutting capacity thanks to innovative cutting geometry
- All tool data can be viewed using on-tool display and i-press app

### Features

- Makita battery system
- All data can be easily read via Bluetooth
- Open head, rotatable 350°
- One-button controlling all tool functions
- Ergonomic balanced centre of gravity
- Automatic retraction when operation is complete
- Manual Retract Stop (MRS) for efficient operations

SCAN or CLICK  
to see the  
Cutter in action



- LED for work area illumination
- LED display for showing tool data including visible and audible signals
- Battery charge and service display

### Order Information

Part No.	Description
ESM50CFM-0	Tool skin and case
ESM50CFM-K	Tool, 2 x 4.0Ah batteries, charger and case

### Technical Data

Cutting Force (kN)	38
Cutting Range (mm)	Max 50 diameter
Battery	Makita 18V 4.0Ah, Li-Ion*
Charging Time (min)	36
Weight (kg)	3.0 including battery

\* See page C37 for battery and charger information

Suitable  
for Al & Cu  
& ACSR

## 55mm Cutter, ACSR/AL/CU - Klauke

Part No. **ESG55CFM**

### Features

- Makita battery system
- All data can be easily read via Bluetooth
- Closed head with bolt interlock, flip top style, rotatable 350°
- One-button controlling all tool functions
- Effortless working due to balanced centre of gravity
- Automatic retraction when operation is complete
- Manual Retract Stop (MRS) for efficient operations

- 2 stage hydraulic system with fast feed and power stroke
- LED for work area illumination
- LED display for showing tool data including visible and audible signals
- Battery charge and service display

### Order Information

Part No.	Description
ESG55CFM-0	Tool skin and case
ESG55CFM-K	Tool, 2 x 4.0Ah batteries, charger and case

### Technical Data

Cutting Force (kN)	120
Cutting Range (mm)	Max 55 diameter
Battery	Makita 18V 4.0Ah, Li-Ion*
Charging Time (min)	36
Weight (kg)	8.2 including battery

\* See page C37 for battery and charger information



120kN Cutting Force

## Klauke®

### 55mm Ratchet Cutter, ACSR/AL/CU - Klauke

Battery Operated Ratchet Cutters, designed for cutting a variety of OH Conductors & UG cables, including CU, AL & ACSR.



#### Features

- Ergonomically designed
- One handed operation
- LED light to illuminate work area
- Forward & Reverse switch
- Versatile Makita platform

Canvas Carry Bag included



#### Order Information

Part No. ACSR	Part No. AL/CU	Description
ESST55AP-AL	ESU55AP-AL	Tool skin & canvas bag
ESST55AP-AL-K	ESU55AP-AL-K	Tool, 2 x 3.0Ah* Makita batteries, charger and canvas bag

#### Technical Data

Part No.	Head Style	Cuts	Jaw opening (mm)	Capacity (mm)			Dimensions (mm) (L x W x H)	Wt (kg) Inc. Battery
				CU	AL	ACSR		
ESST55AP-AL	Ratchet	ACSR	55	-	-	OLIVE*	391 x 110 x 186	3.6
ESU55AP-AL	Ratchet	AL / CU		29	33	-	388 x 110 x 198	3.4

\*OLIVE Conductor stranding 54/7/3.50

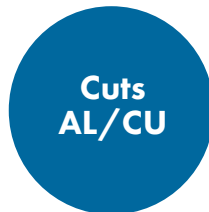
### 50 & 65mm Ratchet style Cutters - AL/CU

Battery Operated Ratchet Cutters, designed for cutting a variety of OH & UG Conductors, including CU & AL



#### Part No. RCB-50Y

- Scissor Style Head
- Ideal for Confined spaces
- Max Cut 630mm<sup>2</sup>
- 50mm Jaw opening



#### Part No. RCB-65N

- 65mm Jaw opening
- Max 1000mm<sup>2</sup>
- Ideal for larger UG cables
- Forward & Reverse mechanism



#### Order Information

Part No.		Description
RCB-50Y-0	RCB-65N-0	Tool skin & case
RCB-50Y-K	RCB-65N-K	Tool, 2 x 3.0Ah* Makita batteries, charger & case

\*See page C37 for battery and charger information

#### Technical Data

Part No.	Head Style	Cuts	Jaw opening (mm)	Capacity (mm)			Dimensions (mm) (L x W x H)	Wt (kg) Inc. Battery
				CU	AL	ACSR		
RCB-50Y	Scissor Ratchet	AL / CU	50	33	33	-	160 x 110 x 370	4.4
RCB-65N	Ratchet	AL / CU	65	41.5	41.5	-	175 x 110 x 320	3.5

## Klauke®



ES85CFM



ESG85CFM



ES105CFM



ESG105CFM

**Cuts AL/CU/SWA**

## Cutters, Battery Operated - 85mm & 105mm - Klauke

### Features

- Powerful Makita battery system
- All data can be easily read via Bluetooth
- Open style head, rotatable 350°
- One-button controlling all tool functions
- Effortless working due to balanced centre of gravity
- Automatic retraction when operation is complete
- Manual Retract Stop (MRS) for efficient operations
- 2 stage hydraulic system with fast feed and power stroke
- LED for work area illumination
- LED display for showing tool data including visible and audible signals
- Battery charge and service display

### 85mm Battery Cutters

#### Part No. ES85CFM

- Large cutting capacity up to 85mm diameter
- Scissor style cutting head

**Cuts  
AL/CU**

#### Order Information

Part No.	Description
ES85CFM-0	Tool skin and case
ES85CFM-K	Tool, 2 x 4.0Ah* batteries, charger and case

#### Part No. ESG85CFM

- Large cutting capacity up to 85mm diameter
- Suitable for CU, AL & SWA

**Cuts  
AL/CU/SWA**

#### Order Information

Part No.	Description
ESG85CFM-0	Tool skin and case
ESG85CFM-K	Tool, 2 x 4.0Ah* batteries, charger and case

### 105mm Battery Cutters

#### Part No. ES105CFM

- Extremely large cutting area up to 105mm diameter
- Suitable for CU, AL & Lightweight SWA

**Cuts AL/CU/  
Lightweight SWA**

#### Order Information

Part No.	Description
ES105CFM-0	Tool skin and case
ES105CFM-K	Tool, 2 x 4.0Ah* batteries, charger and case

#### Part No. ESG105CFM

- Extremely large cutting area up to 105mm diameter
- Guillotine style cutting head
- Suitable for CU, AL & SWA



SCAN or  
CLICK  
to see the  
ESG105 Cutter  
in action

#### Order Information

Part No.	Description
ESG105CFM-0	Tool skin and case
ESG105CFM-K	Tool, 2 x 4.0Ah* batteries, charger and case

### Technical Data

Part No.	ES85CFM	ESG85CFM	ES105CFM	ESG105CFM
Cutting Force (kN)	30	60	74	120
Cutting Range (mm)	Max 85 OD AL & CU	Max 85 OD AL, CU & SWA	Max 105 OD AL, CU & Lightweight SWA	Max 105 OD AL, CU & SWA
Battery	Makita 18V 4.0Ah, Li-Ion*			
Charging Time (min)	36			
Weight (kg)	6.9 including battery	6.8 including battery	9.6 including battery	10.7 including battery

\* See page C37 for battery and charger information

## Cutters, Hand Operated, Hydraulic

### 20, 25 & 40mm Hand Operated Cutters



- Two stage double acting hydraulics
- Ram extends on both open & closed operation
- Manual pressure release at any stage
- Flip top latch head
- Replaceable blades

Part No.	HC-20A	REL-58MC	HC-40A
Brand/Manufacturer	TEN	Reliable	TEN
Head Rotation (°)	180	180	180
Cutting Force (T)	6.0	5.3	8.0
Safety Valve	Yes	Yes	Yes
Length (mm)	390	400	560
	Maximum Cutting Capacity OD (mm)		
Cu / Al	20	25	40
ACSR	20	25	28
Wire Rope	16	25	22
Standard Guy Wire	16	22	15
ReBar, Ground & Anchor Rods	13	16	13
Soft Steel Bolts	16	16	13
Specific Features	Double Stage Hydraulic design	Auto-Retract, No Disassembly to Replace Moving Blade	Double Stage Hydraulic design
Storage Supplied	Carry Bag	Carry Bag	Carry Bag
Weight (kg)	2.8	1.8	6.0

## Cutters, Remote Head, Hydraulic

### 40 to 105mm Cutters, Remote Head



Part No.	SDG105C	SDG852C	SDG45C	PK60UNVC	SDK85C
Type	AL/CU/SWA	AL/CU/SWA	ACSR/AL/CU	ACSR/AL/CU	AL/CU/SWA
Cutting Range (mm)	max. 105 OD	max. 85 OD	max. 45 OD	max. 40 OD	max. 85 OD
Cutting Force (T)	12	6	6	6	3
Operating Pressure (PSI)	10,000	10,000	10,000	10,000	10,000
Length (mm)	432	445	340	350	450
Weight (kg)	7.7	4.3	3.8	2.4	5.2

# Klauke Next Generation Universal Tools - One tool for all your needs

Crimping, cutting or punching: Replaceable adapter and dies quickly adapt the tool to individual tasks. Lightweight and powerful: Crimping up to 400 mm<sup>2</sup>, cutting up to 40 mm diameter or punching up to 92 x 92 mm, no problem at all for the Klauke Multi.

## Crimping

- Can be used with Series 5, 18 and 22 Series dies (6T)
- Wide range crimping with Series 13 dies (12T)
- Cross sections up to 400mm<sup>2</sup>
- Simple adapter replacement

## Cutting

- A wide range of materials can be cut including aluminium, copper, threaded rods, profile rails, railway catenary wires
- Cutting dies available for each application
- Cutting range up to 40mm

## Punching

- Versatile punching with hole punch adapters available
- Punch holes up to 64mm diameter (EK60 & EKM60)

**NEXT  
GENERATION**

All your  
hydraulic  
battery tools in  
one box



SCAN or CLICK  
to see Universal  
Tool in action



## 12 Tonne Universal Tool - Pistol Grip - Klauke

Part No. EK120UNVCFM

- One head for crimping, cutting and punching - one tool for all
- Ideal for field operations where all common jobs can be carried out with just one tool
- Very large crimping range



### Features

- Makita battery system
- All data can be easily read via Bluetooth
- Universal head with flip top style, rotatable
- One-button controlling all tool functions
- Automatic retraction after operation completed
- 2 stage hydraulic system with fast feed and power stroke
- Effortless working due to balanced centre of gravity
- LED for work area illumination
- LED display for showing tool data
- Battery charge and service display

### Order Information

Part No.	Description
EK120UNVCFM-0	Tool skin, 12 Tonne Die Adapter and case
EK120UNVCFM-K	Tool, 12 Tonne Die Adapter, 2 x 4.0A batteries, charger and case

### Technical Data

Crimping Force (kN)	108
Crimping Range (mm)	10-400
Number of Crimps	approx. 110 at 150mm Cu DiN
Cutting Range (mm)	max. 40 diameter
Punching Capacity (mm)	Up to 144 dia. round**
Battery	Makita 18V 4.0Ah, Li-Ion*
Charging Time (min)	36
Weight (kg)	7.35 including battery

\*See page C37 for battery and charger information

**10-400mm<sup>2</sup> Crimping capacity**  
**40mm dia. Cutting Range**  
**144mm dia. round punching**

## Universal Tool Adaptors

Accessories/Tool	EK120UNVCFM	EK60UNVCFM	EKM60UNVCFM
12 Tonne Die Adaptor (included)	UA12T	Not Applicable	Not Applicable
6 Tonne Die Adaptor (included)	Not Applicable	UA22	UA22
Cutter 40mm ACSR	UCASR	UCASR	UCASR
Cutter 40mm Al/Cu	UC40	UC40	UC40
Punch Adaptor	UA12P (Up to 144mm)	UA12P (Up to 64mm)	UA12P (Up to 64mm)
Cutter - Rail Catenary	Upon Request	Upon Request	Upon Request
Cutter - Threaded Rod	Upon Request	Upon Request	Upon Request

\*\*Square Punch & Dies available upon request

**12T Die Adaptor**  
Part No. UA12T



**Cutting Die**  
Part No. UCACSR



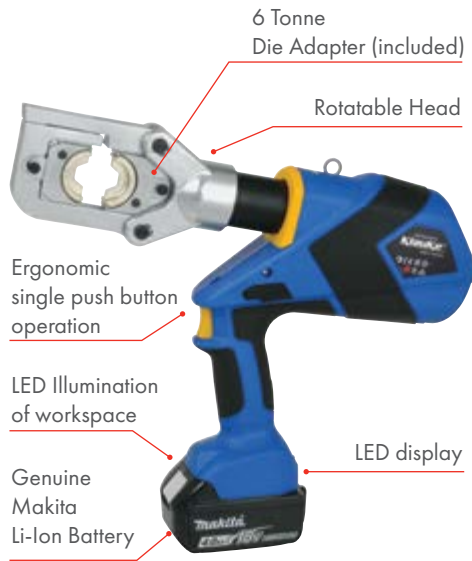
**Cutting Die**  
Part No. UC40



**Punch Adaptor**  
Part No. UA12P

**Punch Dies and Draw studs available - See Page C50**

**Klauke®**



## 6 Tonne Universal Tool - Pistol Grip - Klauke

**Part No. EK60UNVCFM**

- One head for crimping, cutting and punching
- Ideal for field operations where all common jobs can be carried out with just one tool
- All tool data can be viewed using on-tool display and i-press app

### Features

- Makita battery system
- All data can be easily read via Bluetooth
- Universal head with flip top style, rotatable 350°
- One-button controlling all tool functions
- Safety: Automatic retraction after operation completed
- 2 stage hydraulic system with fast feed and power stroke

### Order Information

Part No.	Description
EK60UNVCFM-0	Tool skin and case
EK60UNVCFM-K	Tool, 2 x 4.0Ah batteries, charger, and case

- Balanced centre of gravity
- LED for work area illumination
- Battery charge and service display
- LED Display

### Technical Data

Crimping Force (T)	6
Crimping Range (mm <sup>2</sup> )	6-300
Cutting Range (mm)	max. 40 diameter (See page C31 for adapter)
Punching Capacity (mm)	Up to 64 dia. round (See page C31 for adapter)
Battery	Makita 18V 4.0Ah, Li-Ion*
Charging Time (min)	36
Weight (kg)	4.8 including battery

\*See Page C31 for Accessories

**6-300mm<sup>2</sup> Crimping Capacity  
40mm OD. Cutting Range  
64mm dia. Round punching**

## 6 Tonne Universal Tool - In-Line - Klauke

**Part No. EKM60UNVCFM**

- One head for crimping, cutting and punching 330°
- Ideal in the assembly field where all common jobs can be carried out using one tool
- All tool data in view thanks to display and i-press

### Features

- All data can be easily read via Bluetooth
- Quality assurance via visual and audible signals
- One-button controlling all tool functions
- Universal head flip top style, rotatable
- Balanced centre of gravity

### Order Information

Part No.	Description
EKM60UNVCFM-0	Tool skin and case
EKM60UNVCFM-K	Tool, 2 x 1.5Ah batteries, charger, and case

- LED for work area illumination
- 2-stage hydraulic system with fast feed and power stroke
- Automatic retraction when operation is complete
- LED Display

### Technical Data

Crimping Force (T)	6
Crimping Range (mm <sup>2</sup> )	6-300
Cutting Range (mm)	max. 40 dia. (See page C31 for adapter)
Punching capacity (mm)	up to 64 dia. round (See page C31 for adapter)
Battery	Makita 18V 1.5Ah, Li-ion*
Charging Time (min)	15
Weight (kg)	3.0 including battery

\*See page C37 for battery and charger information

6 Tonne  
Die Adapter (included)

**6-300mm<sup>2</sup> Crimping  
Capacity 40mm OD  
Cutting Range  
64mm dia. round  
punching**





# Insulated Battery Tools

## Your Safety is our priority

Klauke's Orange Line series of battery powered hydraulic cutting and crimping tools are the world's first of their kind, offering protection from electric shocks up to 1000 V. The TRI-INSULATION BARRIER, developed in-house, prevents voltage discharging between tool head and tool body. Every single tool is tested for compliance with the electrical requirements of IEC 60900 in their production process. This guarantees voltage protection up to 1000V.

### TRI-INSULATION BARRIER



- 1. CREEPAGE DISTANCE**  
CLEVER DESIGN ENSURES  
MINIMUM 12.5MM DISTANCE  
BETWEEN NON INSULATED PARTS
- 2. PA6 INSULATION**  
PLASTIC HOUSING MATERIAL  
WITH EXCELLENT INSULATING  
PROPERTIES
- 3. DIELECTRIC OIL**  
HYDRAULIC OIL WITH HIGH  
DIELECTRIC INSULATING PROPERTY

- VDE tested and certified up to 1000V in accordance to the electrical requirements of IEC 60900.
- Insulation from the head provides protection for the operator.
- Bright Orange rubberised body provides non slip protection and differentiates from standard tools.

Working on or near live low-voltage parts up to 1000V is often part of every day work in certain sectors. The use of insulated manual hand tools in tight workspaces and exerting the force required to operate insulated manual hand tools poses a safety risk to the operator.

Klauke Orange tools offers battery-powered cutting and crimping that can significantly reduce operator risk by improving precision and safety in these hazardous work conditions.

**Klauke Insulated Tools provide a safer option**



**Klauke®**

## 1000V Insulated Battery Powered Tools - Klauke

### 20mm Cutter, ACSR/AL/CU - Klauke

**Part No. ES20ISM**

- Orange body for easy differentiation
- Insulated and VDE certified to 1000V for increased safety
- For cutting Al/St conductors (ACSR), Al/Cu cables and laminated copper bus bars
- All tool data in view thanks to the LCD display and Klauke i-press software

#### Features

- All data can be easily read via Bluetooth
- Visual and audible signals
- One-button controlling all tool functions
- Balanced centre of gravity
- Endless Rotatable head
- LED for illuminating work area
- Automatic retraction when operation is complete
- LED Display

#### Order Information

Part No.	Description
ES20ISM-0	Tool skin and case
ES20ISM-K	Tool, 2 x batteries, charger and case

**MEETS  
IEC 60900**

#### Technical Data

Cutting Force (kN)	23
Cutting Range (mm)	Up to 20 dia (dependent on cable/wire type)
Battery	Makita 18V 1.5Ah, Li-ion*
Charging Time (min)	15
Weight (kg)	2.1 including battery

\* See page C37 for battery and charger information

Endless Rotating Head

**Cuts  
Cu, Al  
& ACSR**



### 25mm Cutter, ACSR/AL/CU - Klauke

**Part No. ESM25ISM**

- Orange body for easy differentiation
- Insulated and VDE certified to 1000V for increased safety
- For cutting Al/St wires (ACSR), (Cu, Al, St) cables as well as armoured cables, and stay wires
- All tool data in view thanks to the LCD display and Klauke i-press software

#### Features

- All data can be easily read via Bluetooth
- Visual and audible signals
- One-button controlling all tool functions
- Balanced centre of gravity
- Endless Rotatable head
- LED for illuminating work area
- Automatic retraction when operation is complete
- LED Display

#### Order Information

Part No.	Description
ESM25ISM-0	Tool skin and case
ESM25ISM-K	Tool, 2 x batteries, charger and case

**MEETS  
IEC 60900**

#### Technical Data

Cutting Force (kN)	67
Cutting Range (mm)	Open wire (ACSR) to 25 dia., stay wires to 16 dia., high-tensile stay wires to 12 dia.
Battery	Makita 18V, 1.5Ah, Li-ion*
Charging Time (min)	15
Weight (kg)	2.9 including battery

\* See page C37 for battery and charger information

Endless Rotating Head

**Cuts  
Cu, Al,  
ACSR &  
Stays**



### 32mm Cutter, AL/CU - Klauke

**Part No. ES32ISM**

- Orange body for easy differentiation
- Insulated and VDE certified to 1000V for increased safety
- Slim cutting head - ideal when space is critical
- All tool data in view thanks to the LCD display and Klauke i-press software

#### Features

- All data can be easily read via Bluetooth
- Visual and audible signals
- One-button controlling all tool functions
- Balanced centre of gravity
- Endless Rotatable head
- LED for illuminating work area
- Automatic retraction when operation is complete
- LED Display

#### Order Information

Part No.	Description
ES32ISM-0	Tool skin and case
ES20ISM-K	Tool, 2 x batteries, charger and case

**MEETS  
IEC 60900**

#### Technical Data

Cutting Force (kN)	15
Cutting Range (mm)	max. 32 dia
Battery	Makita 18V, 1.5Ah, Li-ion*
Charging Time (min)	15
Weight (kg)	2.1 including battery

\* See page C37 for battery and charger information

### 50mm Cutter, AL/CU - Klauke

**Part No. ESM50ISM**

- Orange body for easy differentiation
- Insulated and VDE certified to 1000V for increased safety
- High cutting force for cutting copper and aluminium cables
- Saves time due to innovative opening mechanism design
- All tool data in view thanks to display and i-press

#### Features

- All data can be easily read via Bluetooth
- Visual and audible signals
- One-button controlling all tool functions
- Balanced centre of gravity
- Endless Rotatable head
- LED for illuminating work area
- Automatic retraction when operation is complete
- LED Display

#### Order Information

Part No.	Description
ESM50ISM-0	Tool skin and case
ESM50ISM-K	Tool, 2 x batteries, charger and case

**MEETS  
IEC 60900**

#### Technical Data

Cutting Force (kN)	38
Cutting Range (mm)	max. 50 dia
Battery	Makita 18V, 1.5Ah, Li-ion*
Charging Time (min)	15
Weight (kg)	3.1 including battery

\* See page C37 for battery and charger information

Endless Rotating Head

**Cuts  
Cu & Al**



Endless Rotating Head

**Cuts  
Cu & Al**



**Klauke®**

## 5 Tonne Crimper & Cutter - Klauke

Part No. EK425ISM

- Orange body for easy differentiation
- Insulated and VDE certified to 1000 V for increased safety
- All tool data in view thanks to the LCD display and Klauke i-press software

### Features

- All data can be easily read via Bluetooth
- Visual and audible signals in case of error
- One-button controlling all tool functions
- Balanced centre of gravity
- Endless Rotatable head
- LED for illuminating work area
- Automatic retraction when operation is complete
- LED Display

### Order Information

Part No.	Description
EK425ISM-O	Tool skin and case
EK425ISM-K	Tool, 2 x batteries, charger and case

**MEETS  
IEC 60900**

Endless Rotating Head

**Crimps  
up to  
240mm<sup>2</sup>  
Cuts up to  
20mm**



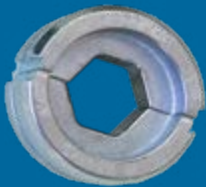
### Technical Data

Crimping Force (kN)	53
Application	5 Tonne Crimping
Crimping Capacity (mm <sup>2</sup> )	Cu/Al 240, ACSR 185
Battery	Makita 18V, 1.5Ah, Li-ion*
Charging Time (min)	15
Stroke/Opening Width (mm)	40
No of crimps per charge	140 @ 70mm <sup>2</sup>
Dimensions (mm)	430(H) x 110(W) x 80(D)
Weight (kg)	2.6 including battery

\*See page C37 for battery and charger information

**53kN force in a lightweight tool of only 2.6kg**

**6T Style Dies  
Available see page C9**



### Available cutting heads

	CJACSR	CJCU
Capacity (mm)	17.5 OD	20 OD
Length (mm)	145	140
Weight (kg)	1	1
Cuts	ACSR/Steel	CU/AL



CJACSR

CJCU



## Batteries, Chargers and Accessories

### Makita 18V Charger

Part No. DC18RC

#### Features

- Integrated L.E.D.
- Battery charge level indicator allows user to monitor battery charge.
- Impact-resistant outer case and shock-absorbing inner-liner are engineered to protect the battery.
- Sixteen contact terminals maintain a constant connection with the tool to help prevent power loss or fluctuation, even during high-vibration applications.
- Battery resists self-discharge and remains ready for use even after long periods of storage.
- Star protection computer controls

- includes overload protection, over-discharge protection and over heat protection.
- If the battery reaches a certain level of heat it will cut power to the tool, protecting the tool and battery from overheating.
- Forced air cooling fan - cools the battery to minimise charging time.
- Digital power display identifies the condition of the battery and charging condition.
- Warranty: 2 Years Warranty Covered By Makita Australia.

Makita 230VAC Rapid Charger  
Part No. DC18RC



### Klauke 10.8V Charger

Part No. LGML1AU

Charger for Klauke Battery RAML1

#### Features

- 230VAC Charger
- Charges Klauke 10.8V batteries

EK50MLAU  
Mini Crimper



Older Style KLAUKE Batteries available on request

### Makita & Klauke Batteries

Battery	Makita BL1815N-L	Makita BL1830B	Makita BL1840B	Makita BL1850B	Klauke RAML
Voltage (V)	18	18	18	18	10.8
Amp (Ah)	1.5	3.0	4.0	5.0	1.5
Charge Time (min)	15	22	36	45	40
Weight (g)	300	605	610	615	300

### Adaptor, Makita Platform to Milwaukee Battery

Part No. MMA18



Makita Battery Platform

Adaptor

Milwaukee Battery



### Tool Strap

Part No. TENM703

- Quality Tool Strap Ideal for Battery Tools
- 2m Web Strap complete with Snap Hook



## Pumps, HP Hydraulic 700bar (10,000psi)

### Electric - Single Acting

**Part No. PH240V-SA-A**

- High pressure electric hydraulic pump gives the operator portability and complete control with simple push button operation.
- 700Bar/10,000PSI
- Corded Pendant Remote
- Single phase (230V)



#### Technical Data

Engine	Single phase electric - 230V 50Hz
Motor Power (kW)	0.75
Max Pressure (PSI)	700 bar (10000)
Flow Rate (lt/min)	Low pressure: 6
	High pressure: 0.7
Oil tank Capacity (lt)	5
Weight (kg)	Approx. 28 Inc. Oil
Dimensions (mm)	315 (L) x 255 (W) x 460 (H)

## TESMEC



### Petrol - Double Acting - TESMEC

**Part No. CPP001050**

- A high pressure petrol motor driven hydraulic pump suited for use where compact, efficient, portable machinery is required.
- High pressure - 700Bar/10,000PSI
- Compact size for portable use.
- Tesmec build quality

#### Technical Data

Engine	4 stroke petrol
Motor Power (HP)	5.5
Max Speed (rpm)	3600
Max Pressure (PSI)	700 bar (10000)
Low Pressure (lt/min)	(0-60 bar) 5
Max Delivery (min)	1.8
Tank Capacity (lt)	10
Weight (kg)	54
Dimensions (mm)	530 (W) x 340 (L) x 370 (H)



### Electric - Double Acting - TESMEC

**Part No. CPP004010**

- A high pressure electric motor driven hydraulic pump suited for use where compact, efficient, portable machinery is required.
- High pressure - 700Bar/10,000PSI
- Compact size for portable use.
- Tesmec build quality

#### Technical Data

Engine	Single phase electric - 230V 50Hz
Motor Power (kw)	2.2
Max Speed (rpm)	2880
Max Pressure (PSI)	700 bar (10000)
Low Pressure (lt/min)	(0-60 bar) 5
Max Delivery (min)	1.8
Tank Capacity (lt)	10
Weight (kg)	50
Dimensions (mm)	530 (W) x 340 (L) x 370 (H)

See page C47 for Hydraulic Hoses

Compact and lightweight Single Acting Hydraulic Pump for operating remote cutting and crimping heads (As shown below)



**5.5kg**  
incl. Battery & Hose

#### Part No. RHP700LK

- Compact and lightweight design
- Suitable for operating high pressure single acting 700 bar crimping and cutting tools
- Fibreglass reinforced polyamide shock proof housing
- Pendant Remote control (Standard)
- All high pressure hoses are supplied with coupling plug and sleeves, filled with hydraulic oil

#### Technical Data

Battery Voltage (V)	18
Battery Capacity	2 x 4.0Ah. Li-ion*
Charging Time (min)	22
Weight (kg)	5.5 inc battery & hose
Operating Pressure (PSI)	max. 700bar (10000)
Max Oil Volume (ml)	approx. 760ml
Dimensions (mm)	265 (L) x 130 (W) x 250 (H)



Pump shown above with optional cutting head and a hydraulic hose



Pump shown above with optional crimping head and a hydraulic hose

#### Order Information

Part No.	RHP700LK-K	RHP700RMCLK-K
Kit Includes	Pump, Corded Pendant, 2m Conductive Hose, 2 x batteries, charger & a bag	Pump, Remote & Corded Pendant, 2m Conductive Hose, 2 x batteries, charger & a bag



Makita Charger  
Part No. DC18RC



Makita 4Ah Batteries  
Part No. BL1840B



2m Hose  
c/w Male Couplers



Padded  
Carry Strap

Available Heads - See page information below for further detail on remote heads

#### Cutting



7.7kg

**105mm Armoured Cutting Head**  
Part No. SDG105C



3.8kg

**45mm Armoured Cutting Head**  
Part No. SDG45C

Page  
C29



4.3kg

**85mm Armoured Cutting Head**  
Part No. SDG852C



5.2kg

**85mm Cutting Head ACSR/Steel**  
Part No. SDK85C

#### Multi Tools



2.4kg

Head Page C14  
Accessories Page C31

**Multi Head  
Crimping/Cutting/Punching**  
Part No. PK60UNVC

#### Crimping



4.5kg

**12T Crimping Head**  
Part No. TP-420H



5.3kg

**25T Crimping Head**  
Part No. HP25T-SA



30.5kg

**60T Crimping Head**  
Part No. HP60TC-SA

Page  
C17

Page  
C16



11.0kg

**45T Crimping Head**  
Part No. HP45T-SA-A

**Klauke®**

## Spiking/Cutting, Cable Systems - Klauke

### 1000V Insulated Pump & Cutting Head - Remote Control

Part No. ASSGG-Series Pump



SCAN or CLICK to View Operation Video



#### Technical data

Battery Voltage (V)	18
Battery	2 x 4.0Ah, Li-ion*
Charging Time (min)	36
Weight (kg)	6.4 inc battery
Operating Pressure (PSI)	700bar (1000)
Usable Oil (ml)	800
Dimensions (mm)	330 (L) x 160 (W) x (H) 280

#### Order Information

Part No.	Description/Components
ASSGG105LC	Safety Pump (ASSGL), Remote Kit, 2 x Batteries, 10m Non-conductive Hose, 105mm Cutting Head ** (SDG105C), & Earth Spike with copper lead
ASSGG852LC	Safety Pump (ASSGL), Remote Kit, 2 x Batteries, 10m Non-conductive Hose, 85mm Cutting Head ** (SDG8525C), & Earth Spike with copper lead

\* See page C37 for battery and charger information

\*\* See page C29 for specifications



Safely perform your cutting/spiking operations on unproven cables from



ESG105RMCCFM

### Pistol Style Cutters 65 & 105mm - Remote Controlled

Part No. ESG105RMCCFM - ESG65RMCCFM

- Large (105mm) & Medium (65mm) diameter remote controlled cable cutter
- Same performance as the standard (105) counterpart but adds a safe work environment
- Ideal for hard to access trenches and manholes by creating adequate distance between possible live conductors and the operator

#### Features

- Unique End Position Control - Emits a sound on the remote to indicate a successful cut. Safer than relying on the Maximum Hydraulic pressure indicator or gauge
- Remote control will only operate when the tool trigger is locked by the Spring Ring

#### Order Information

Part No.	Description
ESG105RMCCFM-K ESG65RMCCFM-K	Tool, Remote Control, 2 x Batteries, Charger and case

- Double Click on the remote to start the cut (safety feature against unintended operation)
- Single Click on the remote for retraction

#### Technical Data

Part No.	ESG105RMCCFM	ESG65RMCCFM
Cutting Force (T)	120	60
Cable Type	AL/CU/SWA	AL/CU/SWA
Cutting Range (mm)	Max 105 dia. dependent on cable type	Max 65 dia. dependent on cable type
Battery	Makita 18V 4.0Ah, Li-Ion	Makita 18V 4.0Ah, Li-Ion
Charging Time (min)	36	36
Weight (kg)	10.5 including battery	6.0 including battery

Unique Cutting Sensor





## Wrench, Hydraulic Impact - Low Pressure

### Part No. Various

- Lightweight aluminium alloy
- Feather trigger allows control of speed
- Larger clearance trigger guard for high voltage gloves
- Ergonomic balanced design with finger moulds in trigger
- Easily changeable forward/reverse push shaft
- EZ selector valve allows change between open and closed centre without tools
- Fixed Tools also available
- Supplied with trigger guard and flush face couplers
- Heat insulated handle
- Lifetime warranty on motor only
- Operating pressure 1,000 - 2,000PSI

Part No.	Chuck Type	Pressure (PSI)	Flow (l/min)	Torque (kN-m)	RPM	Weight (kg)
REL-425CG-TEN	7/16"	1,000 - 2,000	19-30	0.50	3,600	3.9 with coupler
REL-425CG-1.2	1/2"					

See page C47 for Hydraulic Hoses



## Adaptor - 7/16" Hex to 1/2" Square Drive

### Part No. TEN-716-12

- 7/16" hex shaft adapter for 1/2" square drive sockets
- Convert your 7/16" utility impact wrench to a 1/2" drive for your impact sockets
- Designed for high torque Impact wrenches
- Superior wear resistance and durability for utility grade use
- Made from high strength, shock proof steel

## "J" Hook Driver - Slot Socket PLUS

### Part No. SS-2

#### Features

- High Visibility ID Band
- Improved Fit on Large J Hooks (Off-Set & Centre)
- Cross-Arm Hardware
- Earthing Clamps
- Hot Line Clamps
- Impact Rated

Multi-Use Eye Bolt Type Clamp and Wing Nut Applications:



Suits Off-Set & Centred J-Hooks



1/2" Drive



## Sockets Sets 1/2" Drive

### Deep Impact Socket Set - 26 & 29 Piece Kits

**Part No. 658272601** - 26 Piece 1/2" Drive, 12-Point Deep Impact Socket Set  
Includes: 10 to 36mm (Excluding 31 mm) stored in a Blow Mould Case.

**Part No. 84935N** - 29 Piece 1/2" Drive, 6-Point Deep Impact Socket Set  
Includes: 8 to 36mm stored in a Blow Mould Case.

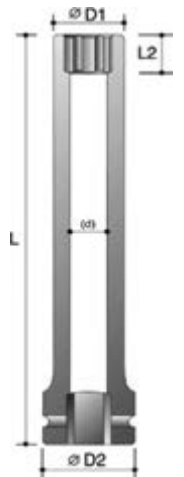
Part No.	Description	Type
658272601	26 piece Socket Set - Deep Impact	12 Point
84935N	29 piece Socket Set - Deep Impact	6 Point

### Extra Deep Tube Socket Set - 7 Piece Kit

**Part No. 605290701**

7 Piece 1/2" Drive, 6-Point "TUBE" Deep Impact Socket Set  
Includes: 19, 21, 24, 27, 30, 32 and 36mm @ 250mm Long Moulded Case

Part No.	Size (mm)	D2 (mm)	D1 (mm)	L2 (mm)	L (mm)	Hole Clearance (mm)
60529019	19	28	28	13	250	14
60529021	21	28	31	13	250	16
60529024	24	28	35	15	250	18
60529027	27	32	38.5	17	250	22
60529030	30	32	42	17	250	22
60529032	32	34	44	19	250	24
60529036	36	36	49	19	250	26



## METRINCH



The Metrinch 6 wall drive system means that one tool set is all you need to service your equipment, whether it's made in Germany, the USA or Australia.

### METRINCH Socket Set - 15 Piece Kit

**Part No. MET-2450**

#### Get More Use Out of Fewer Tools

Metrinch means fewer tools and easier selection as each tool can be used for both metric and inch, plus damaged nuts and bolts. This eliminates switching back and forth from imperial to metric.

- Unique Patented Design
- More Torque, Less Wear
- Non Slip Hold
- Quality



#### Included sizes in Socket Set\*

Fit	1/2" Drive							
Metric (mm)	11	12	13	14	15	16	17	18
SAE/AF (Inch)	7/16	15/32	1/2	9/16	19/32	5/8	11/16	23/32
Length (mm)	80							
Fit	1/2" Drive							
Metric (mm)	19	20	21	22	23	24	25	
SAE/AF (Inch)	3/4	25/32	13/16	7/8	29/32	15/16	1	
Length (mm)	80				86			

**Unique 6 Wall Drive System**  
This 15 Piece socket set equals a 42 piece conventional set

#### Individual sizes available

Fit	1/2" Drive	
Metric (mm)	30	32
SAE/AF (Inch)	1 3/16	1 1/4
Length (mm)	86	

\*All sizes available individually



## Augers, Impact - Woodpecker

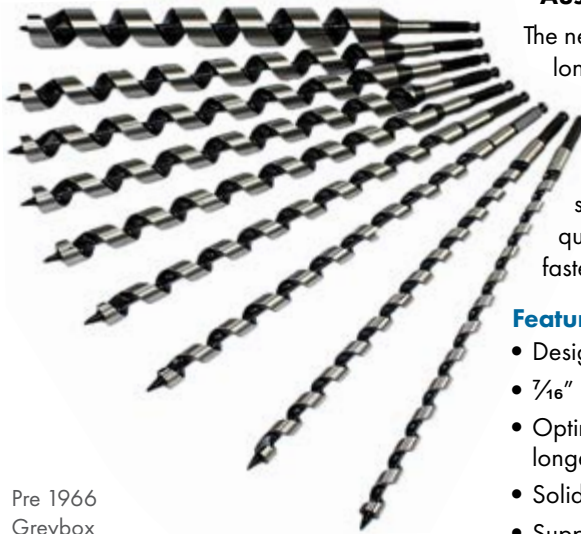
**Woodpecker Impact Auger Bits are engineered to deliver fast, clean cut holes in Australian hardwood power poles.**

The new, improved high grade steel alloy is designed for a longer bit life, staying sharper longer. Featuring a single, heat treated and tempered cutting edge for fast, effortless boring in hardwood. The clean cut of these bits allows easier removal from the pole and helps bolts to slide through with less resistance.

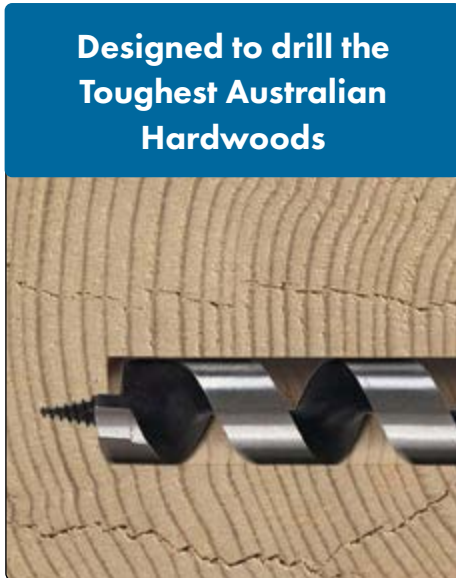
The design is optimised to cut quickly through hardwood with an aggressive lead screw pulling the bit through the material more easily while the wider flute design quickly ejects the chips to clear the hole. This helps to reduce heat, leading to overall faster drilling speeds and longer tool life.

### Features

- Designed to drill cleaner and faster holes in Australian hardwood poles
- 7/16" Quick change hex shank – suitable for electric drills or impact wrenches
- Optimum shaped wide cutting flute ensures a faster chip ejection, less friction and a longer lasting cutting edge
- Solid core for added strength, auger stability and extended tool life
- Supplied in a protective storage case



Pre 1966  
Greybox  
Hardwood



**Designed to drill the  
Toughest Australian  
Hardwoods**

**PROTECTIVE  
STORAGE CASE**



Part No.	Length (mm)	Dia (mm)
WP-225-08	225	8
WP-225-10	225	10
WP-225-11	225	11
WP-225-12	225	12
WP-225-14	225	14
WP-225-16	225	16
WP-225-18	225	18
WP-455-14	455	14
WP-455-16	455	16
WP-455-18	455	18
WP-455-20	455	20
WP-455-22	455	22
WP-455-24	455	24
WP-455-26	455	26
WP-455-28	455	28
WP-455-40	455	40
WP-610-16	610	16
WP-610-18	610	18
WP-610-22	610	22
WP-610-24	610	24
WP-610-26	610	26

## Chuck, Quick Change 7/16" Female to 1/2" Female

**Part No. 2403**

- Super Heavy Duty 7/16" (1/2" Square Drive) Quick-Change Chuck.
- Three ball bearing system to firmly secure you auger bits and adapters.
- Designed to be used with high torque 1/2" square drive impact wrenches.



**THE ONLY 62" (1.6m) LONG REACH CHAINSAW AVAILABLE**

## Chain Saw, Long Reach - Foam Filled

### Part No. REL-LR-Series

Reliable's REL-LR-62-TEN-A long reach hydraulic chainsaw are intended for safely cutting and trimming trees from the ground or an aerial bucket. The powerful hydraulic drive motor can easily make cuts up to 330mm in diameter. With an overall length of 1600mm (Also available 1900 & 2250mm), the operator may easily reach areas not possible with a standard chain saw.

Features include a trigger guard and safety trigger to prevent accidental movement of the chain, a covered sprocket guard, and a rubber collar hand stop. A quick set spool can be turned 180 degree for closed center/open center operations.

### Features

- Powerful hydraulic drive motor
- EZ selector valve allows change between open and closed centre systems without tools
- Foam filled fibreglass shaft to prevent ingress of moisture and provide additional electrical safety protection
- Trigger guard, sprocket guard, rubber hand guard and scabbard
- Flush face couplers fitted

**Available in 3 Lengths**

### Technical Data

Part No.	REL-LR-62-TEN-A	REL-LR-75-TEN-A	REL-LR-88-TEN-A
OAL (mm)	1600	1900	2250
Insulated Section Length (mm)	845	1175	1515
Cut Capacity (mm)	330		
System	Open or Closed		
Flow Range (lpm)	19-30		
Operating Pressure (PSI)	(1,000-2,000) 68.9-137.8 Bar		
Pressure Port Thread	9/16" -18 SAE O-Ring		
Return Port Thread	3/4" -16 SAE O-Ring		
Chain Pitch (mm)	8.25/25.4		
Chain Gauge (mm)	1.47/25.4		
Plastic Scabbard	SCAB-PS		
Weight (kg)	3.6	4.3	5

Adjustable Chain Oiler

Insulated section length



Foam Filled

Safety trigger

EZ OC to CC Selector

Trigger guard



**Foam filled for added electrical safety protection**



**Boom Mount Long Reach Saw Scabbard also available Part No. REL-LR-SS**



Power in your hands,  
pressure off your back

## Tamper, Pole Hydraulic - Reliable

### Part No. REL-TMP-Series

Makes quick work of setting poles, asphalt patch and general construction backfill compacting. Only 3 moving parts for low maintenance.

Reversible On/Off valve for Open and Closed-Center systems (hose-end models). Standard with kidney-shaped foot. Rotate trigger selector for Open and Closed-Center systems (valve on tube models). Used for setting poles and general backfill compacting

- Standard kidney shaped foot included on all models
- Only three moving parts reduces servicing time
- Change between open and closed centre systems
- Flush face couplers fitted
- Hose End Valve & Valve on Tube options available

Hoses available with Burst protection

Valve on Tube



Valve on Hose



TAMP-SAFE  
TS2001R



The Tamp-Safe handle was designed by a professional linesman for the safety of utility workers.

Tamp-Safe handles are built with safety in mind. It puts the operator's hand in a safe position away from the hydraulic hoses.

Our innovative handle is designed to attach to most hydraulic tampers, including Reliable, Greenlee/Fairmont, and Stanley tampers.



Kidney Shaped Tamping Foot

### Technical Data

Part No.	Type	Length (m)	Width (mm)	Flow Range (lt/min)	Pressure Port Thread	Return Port Thread	Foot Size (mm)	Blows (lt/min)	Approx Weight (kg)	Tamp-Safe Part No.
REL-TMP-60VT-TEN	Valve on Tube	1.5	100	15-23	1/16" - 18 SAE O-Ring	3/4" - 16 SAE O-Ring	60 x 200	1160	9.5	TS-2001R
REL-TMP-72VH-TEN	Valve on Hose	1.8							11	
REL-TMP-72VT-TEN	Valve on Tube	1.8							11	
REL-TMP-85VH-TEN	Valve on Hose	2.1							12.1	



## Pole Pullers, Hydraulic

### 56 Tonne Hydraulic Pole Puller

**Part No. PP-60-XHD**

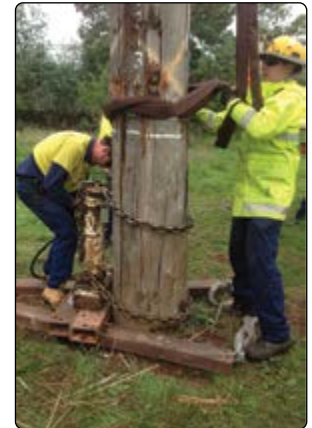
- Dual Cylinder Pole Puller
- 600mm hydraulic cylinder stroke
- High capacity, hydraulic powered
- Pulling utility poles up to 700mm diameter
- Force of 56 Tonne
- Grips the pole with cam-action heads
- Cam action head has bevelled teeth to provide a better grip
- Use with open-centre or closed-centre hydraulic systems
- Fitted with 7.5m hydraulic hose
- Features built-in fork pockets, 2 lifting points on the head and high strength alloy chains
- Increased stability due to larger footprint
- Increased gripping capability ensures chain does not slip up pole
- Utilises existing low pressure tool circuit on lifter borer-crane
- Hydraulics: Required flow rate 5-15 gpm @ 2,250PSI max.

**56 Tonne Hydraulic Pulling Power**



SCAN or CLICK to View Operation Video

**Reduce Risks  
Increased Safety**



#### Technical Data

<b>Performance</b>	Pull 56 Tonne at 155 bar (2250)
<b>Maximum Pole Size (mm)</b>	710 Diameter 2230 Circumference
<b>Cylinder</b>	Stroke 600, Bore 150, Rod 125
<b>Head Chains</b>	2 x 22mm Grade 100
<b>Footprint (mm)</b>	Exterior 1168 x 1168 Interior 711 x 711
<b>Height (mm)</b>	Retracted 1500 Extended 2100
<b>Weight (kg)</b>	680
<b>Lifting Points</b>	2 lifting eyes on the head Fork Pockets 83 x 184 x 1168



### 22 Tonne Hydraulic Pole Puller

**Part No. REL-PL-P**

The REL-PL-P will make Pole Pulling with a Lifter Borer a thing of the PAST. Reduce damage and potential for injury related to pole pulling. Simple installation and operation combined with RELIABLE performance makes this Pole Puller a "Must Have Accessory" for all of your pole pulling operations.

**Kit Includes:**

- Hydraulic Cylinder with Flush Face Coupler Set
- Swivel Chain Hook Assembly
- Chain (12.7mm x 1830mm Alloy)
- Base Plate & Back Plate

#### Technical Data

<b>Operating Pressure (PSI)</b>	2800 (193bar)
<b>Recommended Flow (lpm)</b>	15-30
<b>Lift at Maximum Pressure (kg)</b>	22,734kg
<b>Part</b>	<b>Weight (kg)</b>
<b>Cylinder</b>	25.85
<b>Base Plate</b>	11.36
<b>Back Plate</b>	3.2
<b>Swivel Chain Hook Assembly</b>	16.32
<b>Chain</b>	6.8
<b>Base Pad (Optional)</b>	11.36



R12-TD Test die (included)



## Compression Test Gauge - 12 Tonne

### Part No. REL-CG-12TN

For testing compression output of 12 Tonne crimpers. Portable hydraulic fault identification tool complete with R12-TD "U" style test dies.

<b>Max Gauge Reading</b>	15,000PSI 1034 Bar
<b>Weight (kg)</b>	2

Coupler TC-371



## Couplers, HP Hydraulic

TC Series couplings are used in high pressure applications with hydraulic and mechanical shock. Steel coupler sleeves and nipple bodies are hardened for resistance to damage. Fluorocarbon seals along with PTFE back up rings provide reliable sealing in high pressures. Available in 3/8 inch size only, with sleeve lock to guard against accidental disconnection.

### Technical Data

- Body Size: 3/8
- Rated Pressure (psi): 10,000
- Rated Flow (gpm): 6
- Temp Range (C): -26° - 204°



Nipple TC-372

Part No.	TC-371	TC-372
<b>Description</b>	HP Hyd. Coupler	HP Hyd. Nipple
<b>Fitting</b>	Remote Hyd. Tools & Pumps	Standard & Non-Conductive
<b>Thread</b>	3/8-18 NPSF	
<b>Overall Length (mm)</b>	63	46
<b>Weight (g)</b>	195	63

## Hoses, Hydraulic

### Low Pressure Hydraulic Hoses - Twin-Line - NRP Jones

- Twin low pressure flexible hydraulic hose
- Strain relief sleeve over crimped connections
- Temperature: -4°C to 93°C
- Certified non-conductive rubber
- Flush face couplers both ends
- Neoprene inner tube with nitrile outer, reinforced two textile braid



Part No.	Length (m)	ID (mm)	OD (mm)	Rated Pressure (PSI)	Min Burst (PSI)	Min Bend (mm)	Weight (kg)
B098-FF	3	3/8	3/4	2250	9000	127	1.9

### High Pressure Hydraulic Hoses

#### Part No. Black - Standard

#### Part No. Orange - Non-Conductive

- High pressure - 700Bar/10,000PSI
- 3m standard and non-conductive hose available

Contact TEN for other lengths and coupler combinations



## Single and Twin Hydraulic Hose Assemblies Available

## Pressure Gauge, In-line Flow

### Part No. REL-FPG

- Protect workers, valuable equipment, and property from damage caused by excess hydraulic pressure or flow
- Install between tool and hydraulic power source to test system output pressure and hydraulic flow
- Allows you to determine correct system pressure and hydraulic flow to the tool, reducing seal wear and extending the life and performance of your low pressure hydraulic tools
- Ideal for fleet and depot workshops

Contact TEN for fitting and coupler type



**Protect Equipment and Workers**



## Punch Drivers - Punch & Dies

### Punch Driver, Battery Powered - Greenlee

Part No. LS100FLEXCFM

#### Inteli-PUNCH™ Driver – Greenlee - Made in Germany

The 11-Tonne Battery powered Punch Driver from Greenlee is the fastest, most powerful knockout driver available on the market today.



- Auto-Retract Technology Patent-Pending - Pressure-sensing technology accurately detects punch completion and automatically retracts the ram, for longer tool life
- Time Saver - maximum cycle time of 8 seconds
- Punch up to 161.9mm size holes in mild steel and 115.4mm holes in stainless steel
- 360° Rotating Head - Rugged, patent-pending swivel design to punch at any angle
- Compact, Ergonomic Design - Ergonomic tapered grip for easy one-handed operation
- Gator Eye® Compatible - with i-Press™ software, monitor tool performance including peak forces and number of cycles
- Compatibility - Works with all Greenlee knockouts. Same draw studs used with other Greenlee Hydraulic punches
- Lightweight - 2.63kg
- Led light for dark areas

#### Technical Data

Output Force (kN)	11
Battery	Makita 18V - 4.0Ah*
Charging Time (min)	36
Weight (kg)	2.8 with Battery

\* See page C37 for battery and charger information

#### Punching Capacity

Material	Punch Size (mm) OD	Material Thickness (mm)
Mild Steel	12.7 to 115.4	3.4
	12.7 to 89.9	3.4
Stainless Steel	12.7 to 115.4	2.6

#### Order Information

Part No.	Description
LS100FLEXCFM-K	1 x Punch Driver 2 x 18v Makita Batteries 1 x Charger Draw Stud 19mm to 9.5mm (52042827) & Short Spacer (50032488)

\* Draw Stud 19mm 52045298 is required for punch sizes 50.8mm (ISO50) & 63.5mm (ISO60)

NOTE: Above draw stud suits standard punch & dies and are not compatible with the Speed Punch & Dies on opposite page.

See opposite page for Speed Punch™







**SAVE TIME & MONEY WITH EVERY PUNCH**



**Punch Holes in Mild & Stainless Steel**

**UP TO 3X FASTER**



Punch & Dies Kit ISO 16-40



SCAN or CLICK to View Operation Video



Stainless Steel Standard and square Punch & Dies Option Available. Contact TEN for further Information

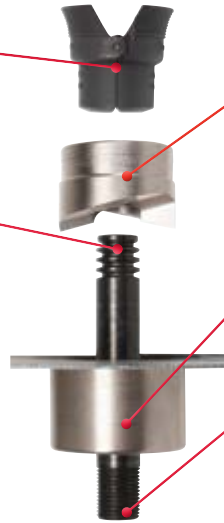
## Speed Punch & Dies - Greenlee

### SPEED LOCK

Quickly secures the system in place - more holes, less time.

### RUGGED GROOVES

Holds up on the job – no more damaged threads.



### NO THREAD PUNCH

Easily slides on/off draw stud.

### EXTENDED DIE HEIGHT

No need for spacers.

### STANDARD DRAW STUD END

Works with existing hydraulic and battery-operated punch drivers.

## Speed Punch Knock-Out Kit - Metric ISO16 - 40

### Part No. 52055439SET

For punching holes in mild steel, aluminium, fiberglass, and plastic

**Capacity:** Mild Steel Max 3.0 mm

**Diameter:** Actual hole sizes: 16.2mm to 40.5mm (ISO)

**Driver:** Use with Greenlee Punch Drivers: LS100 - Battery-Powered Driver, or Hydraulic Drivers

(REQUIRES ALTERNATE LONG DRAW STUDS (7212SP13 & 7212SP12))

**Kits Includes:** 1 x each (Punch & Die) ISO-16, ISO-20, ISO-25, ISO-32, and ISO-40  
 1 x 3/8" Speed Lock & 1 x 3/4" Speed Lock  
 1 x 3/8" x 97mm Std. Draw Stud  
 1 x 3/4" x 122mm Std. Draw Stud  
 1 x Plastic Storage Case.

**ISO:** ISO-16 to ISO-63 Diameter

**Material:** Black Oxide Finish

**Pilot Hole:** 3/8" Draw Studs: 12.7mm PILOT HOLE

3/4" Draw Studs: 22.2mm PILOT HOLE

**Package:** Plastic Storage Case

**Weight:** 3.39 kg

### Kit Replacement Parts for ISO 16 to 40mm (52055439SET)

Punch Part No.	Description/Hole Size (mm)
52055431	Punch & Die - ISO-16 / 16.2
52055432	Punch & Die - ISO-20 / 20.4
52055434	Punch & Die - ISO-25 / 25.4
52055435	Punch & Die - ISO-30 / 32.5
52055436	Punch & Die - ISO-40 / 40.5

### Accessories

Part No.	Description
52055439	3/8" SPEED LOCK & 3/8" Draw Stud (12.7mm Pilot Hole)
52055440	3/4" SPEED LOCK & 3/4" Draw Stud (22.2mm Pilot Hole)
KKSPISO16B63	Plastic Storage Case

### Larger ISO Punch & Dies Sizes

Die Part No.	Description/Hole Size (mm)
52055437	Punch & Die - ISO-50 / 50.8
52055438	Punch & Die - ISO-63 / 63.5

## Part No. ISOPD16-50 Mild and Stainless steel Punch and Dies

Punch & Dies Set (ISOPD16-50) includes:

- 7 x Round, 3 Crown ISO type, Punch & Dies (\*Indicated in table below)
- 1 x 9.5 x 80mm & 1 x 19 x 138mm Draw studs
- 1 x 20, 1 x 34 & 1 x 44mm Spacers

### Punch & Draw Stud Part No's

Part No.	Hole Size (mm)	Draw Stud (mm)	Part No.
ISOPD-16	16*	3/8" (9.5)	DS3-8
ISOPD-20	20*	3/8" (9.5)	DS3-8
ISOPD-22.5	22.5*	3/8" (9.5)	DS3-8
ISOPD-25	25*	3/8" (9.5)	DS3-8
ISOPD-32	32*	3/4" (19)	DS3-4
ISOPD-40	40*	3/4" (19)	DS3-4
ISOPD-50	50*	3/4" (19)	DS3-4
PD-63.5	63.5	3/4" (19)	DS3-4
PD-75	75	3/4" (19)	DS3-4
PD-50	90	3/4" (19)	DS3-4

### Spacer Part No's

Part No.	Spacer (mm)
DSS-20	20
DSS-34	34
DSS-44	44



## Punch Driver, Hand Hydraulic

### Part No. SB-10B

The SB-10B is a Hand Pump with a Remote Punching Head attached to a flexible Hose Lead. Often referred to as a Chassis Punch, this Unit is a Premium Quality Punch Kit.

- 1 x SB-10B Hand Hydraulic Punch kit
- 1 x Steel Carrying Case

SB-10B Punch Driver shown with Punch/dies, draw-studs & spacers. (sold separately)



### Technical Data

Part No.	SB-10B
Output Force (kN)	8.8
Pressure (PSI)	10,000 (700bar)
Dimensions (mm)	370 x 220 x 130
Weight (kg)	9.0

### Punching Capacity

Material	Punch Size (mm) OD	Material Thickness (mm)
Mild Steel	115.5	3.2
Stainless Steel	63.5/115.5	3.2/1.6

## Square Punch & Dies available upon request

## Punch Driver, Battery Powered - iToolco

### Part No. GP122

Operates with most model 230vAC and Battery drills, new or old, with no special add-on tools required. Punches mild and stainless steel up to 152mm. The punches and dies are clearly marked with Centre Point™ marks for perfect alignment, no matter what direction you punch from. Lightweight and easy to use, the Gear Punch™ tool is compatible with other punch and die offerings.

### Features

- Gear Punch, SS 2.4mm rated
- Knockout punch & Dies 12.7 through 152mm
- Draw Stud
- Step Bits Helical TiAn Coated
- 3/8" Nut Drivers
- Centre Point Knockout Layout Tool
- Fast and Easy compatible with Corded or Cordless Drill
- No Leaking Hydraulics
- No Hydraulic Seals to Replace

### Kit Includes

Part No.	Description	Hole Size (mm)	Qty
GP01	Punch Tool	-	1
CP02	Centre Point Knockout Layout Tool	-	1
DS716	7/16" x 3/4" Draw studs	-	2
DS034	3/4" x 3/4" Draw Stud	-	2
ND038	3/8" Nut Driver	-	2
SB78	7/8" Step Bit	-	2
PD01	1/2" Punch and Die	22.5	1
PD02	3/4" Punch and Die	28.4	1
PD03	1" Punch and Die	34.5	1
PD04	1-1/4" Punch and Die	43.2	1
PD05	1-1/2" Punch and Die	49.6	1
PD06	2" Punch and Die	61.5	1
GPD02	1/2" - 2" Case		1

\*Imperial sizes mentioned above refer to actual conduit sizes (Larger size Punch and Die kits available upon request)



## Punch Head, Hydraulic

### Part No. SB-80C

The SB-80C Tower & Busbar punch is ideal for punching through steel tower legs & busbar, with a max hole diameter of 20.5mm.

#### Features

- Body manufacture from high strength steel
- Quick smooth punching with no burring
- Positing plate for precise punch location

The punch is sold standard with 4 punch & dies (10.5, 13.5, 17.5 & 20.5mm)

Additional accessories include die fixing tool, Allen key and Steel Carrying Case

- Include quick coupler for easy pump assembly
- Operate with a single acting hydraulic pump

#### Technical Data

Part No.	SB-80C
Output Force (T)	31
Pressure (PSI)	10,000 (700bar)
Tool Dimensions (mm)	250 x 100 x 370
Case Dimensions (mm)	440 x 380 x 160
Throat Depth (mm)	80
Weight (kg)	13.5

#### Punching Capacity

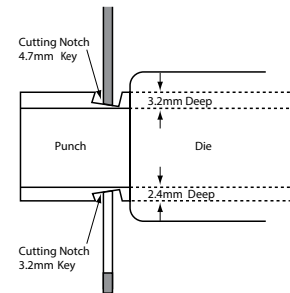
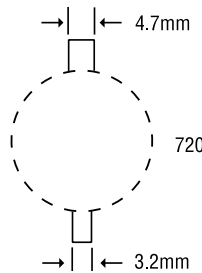
Material	Punch Size (mm) OD	Material Thickness (mm)
Mild Steel	20.5	10
CU/AL	20.5	13

NOTE: Optional punch & dies sold separately - 8.5, 11.5, 15.5 & 18.5mm

## Keyway Punch - Hand operated - Greenlee

### Part No. 720

Eliminates time-consuming hand sawing and filing making keyways for push-button switches  
Use as a nibbler to make wider or deeper keyways in up to 3.2mm mild steel  
Punches 3.2mm or 4.7mm keyways for 22.5mm or 30.5mm push-button holes



#### Ordering information

Part No.	Description	Weight (kg)
720	Keyway Punch	1.27
26536	Replacement Punch	-
26538	Replacement Die	-

Contact TEN for further information on the Busbar Cutters & Benders

## Busbar Bender, Hydraulic

### Part No. BB-200C

#### Features

- Output force: 20T
- Pressure: 10,000psi
- Bending Capacity: 200 x 12mm
- Weight: 28kg



## Busbar Cutter, Hydraulic

### Part No. BC-200V

#### Features

- Output force: 30T
- Pressure: 10,000psi
- Cutting Capacity: 200 x 12mm
- Weight: 35kg



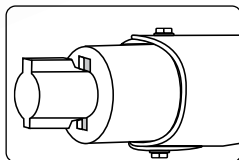
SB-80C shown stored in steel carry case



10.5, 13.5, 17.5 & 20.5mm punch & dies included in kit



Punch and Die









## TEN Group

The Energy Network (Australia) Pty Ltd | ABN 72 093 052 441

### QUEENSLAND

2B, 605 Zillmere Road  
ZILLMERE 4034

**P** +61 7 3212 8999

**W** [www.tengroup.com.au](http://www.tengroup.com.au)

**E** [salesqld@tengroup.com.au](mailto:salesqld@tengroup.com.au)

### TEN HIRE

2B, 605 Zillmere Road  
ZILLMERE 4034

**P** +61 7 3212 8999

**W** [www.tenhire.com.au](http://www.tenhire.com.au)

**E** [hire@tengroup.com.au](mailto:hire@tengroup.com.au)

### NEW SOUTH WALES

Suite F2, Level 1  
152-156 Pacific Highway  
TUGGERAH NSW 2259

**P** +61 417 631 443

**E** [salesnsw@tengroup.com.au](mailto:salesnsw@tengroup.com.au)

### VICTORIA

Unit 16, 191-195 Greens Road,  
DANDENONG STH VIC 3175

**P** +61 3 9793 1622

**E** [salesvic@tengroup.com.au](mailto:salesvic@tengroup.com.au)

### WESTERN AUSTRALIA

4/15 Baile Road  
CANNING VALE WA 6155

**P** +61 8 9455 5574

**E** [saleswa@tengroup.com.au](mailto:saleswa@tengroup.com.au)

### TASMANIA | STH AUSTRALIA

Unit 19, 15 Stanton Place  
CAMBRIDGE TAS 7170

**P** +61 499 996 441

**E** [salestas@tengroup.com.au](mailto:salestas@tengroup.com.au)

