



# Clamp Star

THE CONNECTOR CORRECTOR

## Clampstar

### Connector Corrector

ClampStar® is an Engineered Mechanical Shunt also known as a Connector Corrector that is intended to correct and reinforce the deteriorated electrical and mechanical performance of hot, aged or degraded midspan joints and other connectors, clamps and fittings.

**Failing connectors are repaired with NO power interruption**

Install by:

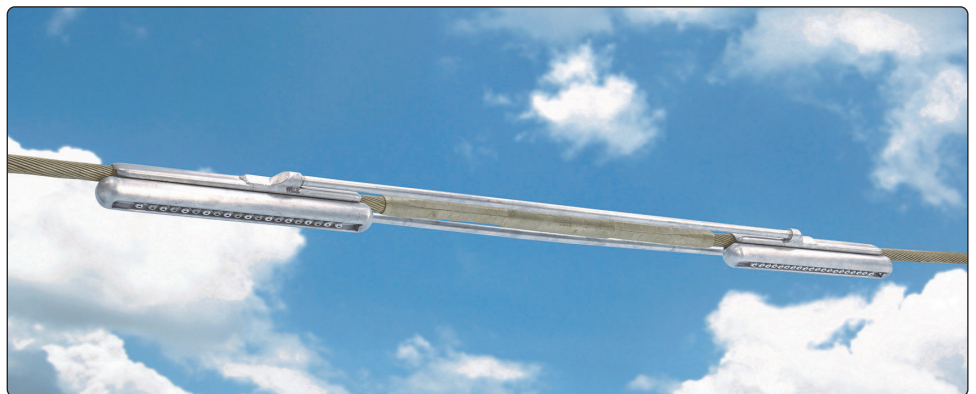


A popular use of ClampStar® is to increase the performance rating of existing midspan joints and other connectors, clamps and fittings for the purpose of increasing line ampacity that may be presently limited by current connections.

ClampStar® eliminates risk and prevents catastrophic connector failures before they happen, and are installed in just minutes.

### ClampStar® provides great benefit to the utility:

- Lightweight design installs in less than 10 minutes!
- Permanent installation for deadends, midspan joints, suspension clamps, OPGW and damaged conductor
- Easily installs over existing connectors or suspension points
- No rigging equipment required such as special mechanical grips, Come-Alongs, jumpers or cutters
- Can be installed with hot stick or barehand methods
- Available for copper, ACSR and all aluminium stranded conductors



**Connector Correctors are available for all common conductors and applications. Bespoke designs available, contact TEN with your connector challenge**



## ClampStar Applications

### Failing Mid-Span Joints

- Failing midspan joints are repaired with NO power interruption and splice replacement is no longer necessary
- The electrical and mechanical integrity is restored to the joint and ampacity is increased
- The units are pre-shipped with a proprietary high performing inhibitor ensuring the best possible connection at the interface
- The units are simply placed over the damaged midspan joint and the shear off bolts tightened with a battery impact drill or podger



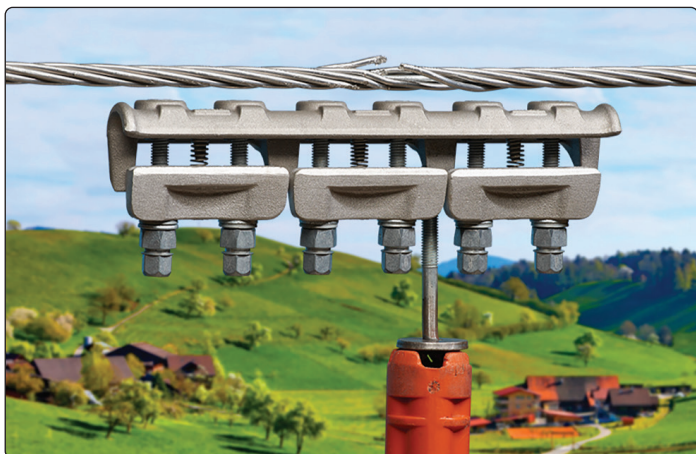
### Damage at Suspension Clamps

- ClampStar® provides an elegant, economical and easily installed solution for restoring the electrical and mechanical integrity of conductor damage at the suspension clamp, without the need for costly re-stringing
- Safe-T-Link Tether assemblies are available for suspension clamp applications requiring additional mechanical support where the tensile strengths of the conductor have been compromised.



### Failing Dead-Ends

- The ClampStar® dead end assemblies can be installed from a helicopter or basket, working live, in as little 15-30 minutes
- The restoration of mechanical integrity is accomplished with the Safe-T-Link tether. The purpose of the tether is to "arrest" any possible elongation of the original deadend
- Deadend solutions can be custom designed to meet your construction



### Conductor Repair

- Classic Connectors ClampStar® Repair Units are a cost effective and time efficient solution to repairing damaged conductors including OPGW outer strands damaged by lightning strikes
- Installation takes less than 10 minutes and units can be installed without power disruption barehand or by hot stick.
- The units are simply placed over the damaged section of conductor/OPGW and the shear off bolts tightened with a battery impact drill or podger.



SCAN OR CLICK TO VIEW VIDEO  
SCAN or CLICK  
QR-Code for installation